

## Product datasheet for **TA502701M**

### NDUFA7 Mouse Monoclonal Antibody [Clone ID: OTI2E4]

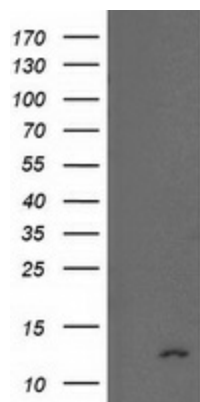
#### Product data:

Product Type:	Primary Antibodies
Clone Name:	OTI2E4
Applications:	FC, IF, WB
Recommended Dilution:	WB 1:2000, IF 1:100, FLOW 1:100
Reactivity:	Human, Mouse, Rat
Host:	Mouse
Isotype:	IgG1
Clonality:	Monoclonal
Immunogen:	Full length human recombinant protein of human NDUFA7 (NP_004992) produced in HEK293T cell.
Formulation:	PBS (pH 7.3) containing 1% BSA, 50% glycerol and 0.02% sodium azide.
Concentration:	0.53 mg/ml
Purification:	Purified from mouse ascites fluids or tissue culture supernatant by affinity chromatography (protein A/G)
Conjugation:	Unconjugated
Storage:	Store at -20°C as received.
Stability:	Stable for 12 months from date of receipt.
Predicted Protein Size:	12.4 kDa
Gene Name:	NADH:ubiquinone oxidoreductase subunit A7
Database Link:	<a href="#">NP_004992</a> <a href="#">Entrez Gene 66416 Mouse</a> <a href="#">Entrez Gene 299643 Rat</a> <a href="#">Entrez Gene 4701 Human</a> <a href="#">O95182</a>
Synonyms:	B14.5a; CI-B14.5a
Protein Pathways:	Alzheimer's disease, Huntington's disease, Metabolic pathways, Oxidative phosphorylation, Parkinson's disease

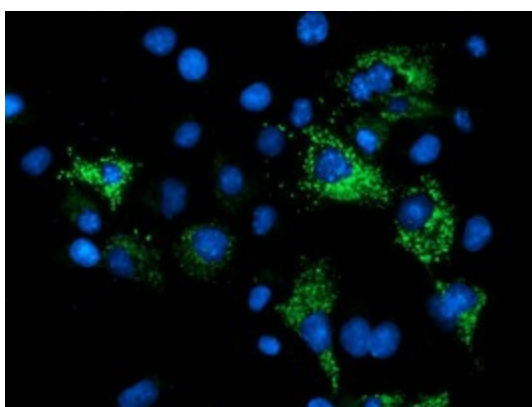


[View online »](#)

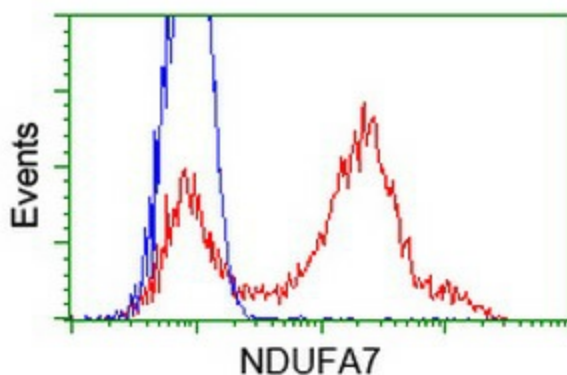
## Product images:



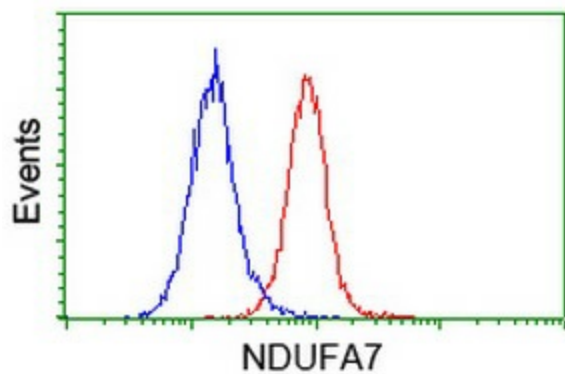
HEK293T cells were transfected with the pCMV6-ENTRY control (Left lane) or pCMV6-ENTRY NDUFA7 ([RC200534], Right lane) cDNA for 48 hrs and lysed. Equivalent amounts of cell lysates (5 ug per lane) were separated by SDS-PAGE and immunoblotted with anti-NDUFA7. Positive lysates [LY417603] (100ug) and [LC417603] (20ug) can be purchased separately from OriGene.



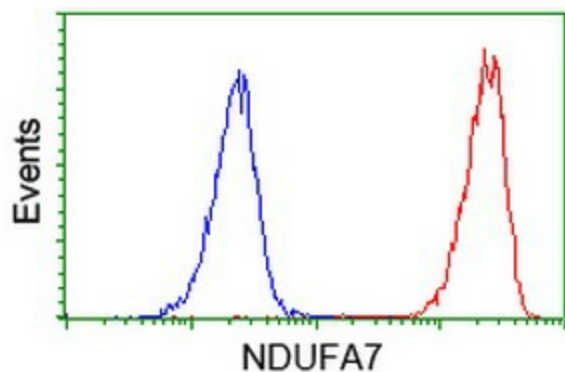
Anti-NDUFA7 mouse monoclonal antibody ([TA502701]) immunofluorescent staining of COS7 cells transiently transfected by pCMV6-ENTRY NDUFA7 ([RC200534]).



HEK293T cells transfected with either [RC200534] overexpress plasmid (Red) or empty vector control plasmid (Blue) were immunostained by anti-NDUFA7 antibody ([TA502701]), and then analyzed by flow cytometry.



Flow cytometric Analysis of HeLa cells, using anti-NDUFA7 antibody ([TA502701]), (Red), compared to a nonspecific negative control antibody (TA50011), (Blue).



Flow cytometric Analysis of Jurkat cells, using anti-NDUFA7 antibody ([TA502701]), (Red), compared to a nonspecific negative control antibody (TA50011), (Blue).