

Product datasheet for **TA502700BM**

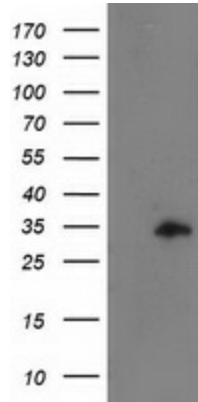
CCNB1IP1 Mouse Monoclonal Antibody (HRP conjugated) [Clone ID: OTI4H3]

Product data:

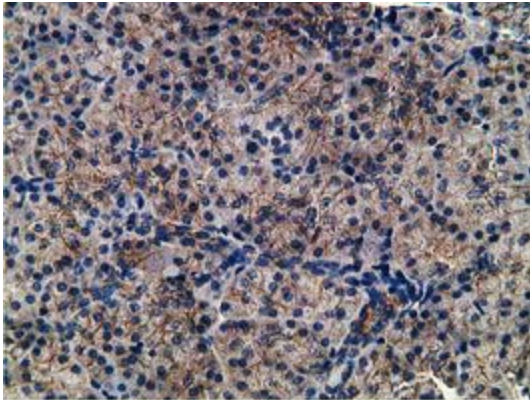
Product Type:	Primary Antibodies
Clone Name:	OTI4H3
Applications:	FC, IHC, WB
Recommended Dilution:	WB 1:500, IHC 1:150, FLOW 1:100
Reactivity:	Human, Mouse, Rat
Host:	Mouse
Isotype:	IgG1
Clonality:	Monoclonal
Immunogen:	Full length human recombinant protein of human CCNB1IP1 (NP_878269) produced in E.coli.
Formulation:	PBS (pH 7.3) containing 1% BSA, 50% glycerol.
Concentration:	0.5 mg/ml
Purification:	Purified from mouse ascites fluids or tissue culture supernatant by affinity chromatography (protein A/G)
Conjugation:	HRP
Storage:	Store at -20°C as received.
Stability:	Stable for 12 months from date of receipt.
Predicted Protein Size:	31.4 kDa
Gene Name:	cyclin B1 interacting protein 1
Database Link:	NP_878269 Entrez Gene 239083 Mouse Entrez Gene 57820 Human Q9NPC3
Background:	HEI10 is a member of the E3 ubiquitin ligase family and functions in progression of the cell cycle through G(2)/M. [supplied by OMIM, Apr 2004]
Synonyms:	C14orf18; HEI10



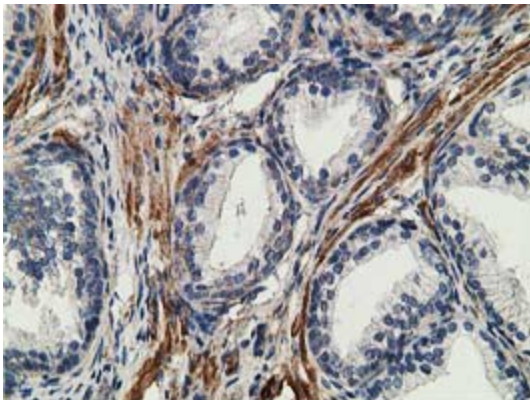
[View online »](#)

Product images:

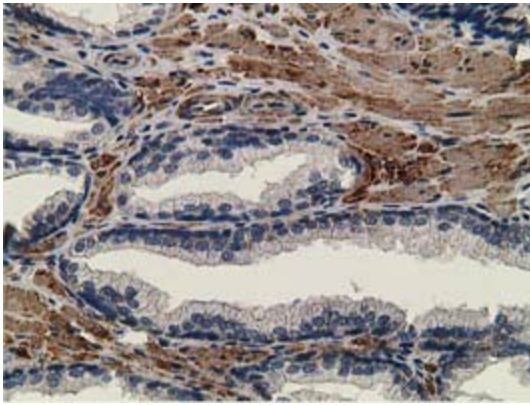
HEK293T cells were transfected with the pCMV6-ENTRY control (Cat# [PS100001], Left lane) or pCMV6-ENTRY CCNB1IP1 (Cat# [RC213849], Right lane) cDNA for 48 hrs and lysed. Equivalent amounts of cell lysates (5 ug per lane) were separated by SDS-PAGE and immunoblotted with anti-CCNB1IP1 (Cat# [TA502700]). Positive lysates [LY405381] (100ug) and [LC405381] (20ug) can be purchased separately from OriGene.



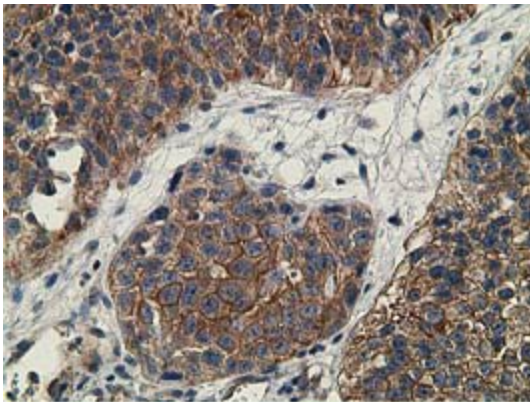
Immunohistochemical staining of paraffin-embedded Human pancreas tissue within the normal limits using anti-CCNB1IP1 mouse monoclonal antibody. (Heat-induced epitope retrieval by 10mM citric buffer, pH6.0, 100°C for 10min, [TA502700])



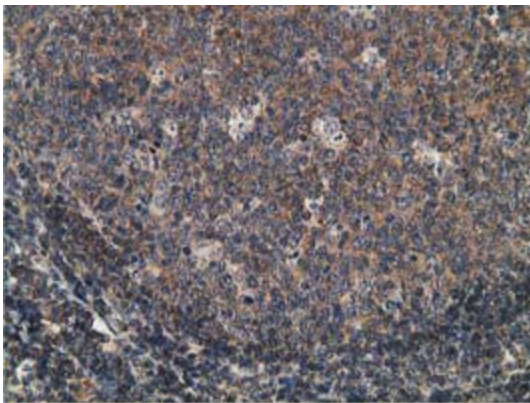
Immunohistochemical staining of paraffin-embedded Human prostate tissue within the normal limits using anti-CCNB1IP1 mouse monoclonal antibody. (Heat-induced epitope retrieval by 10mM citric buffer, pH6.0, 100°C for 10min, [TA502700])



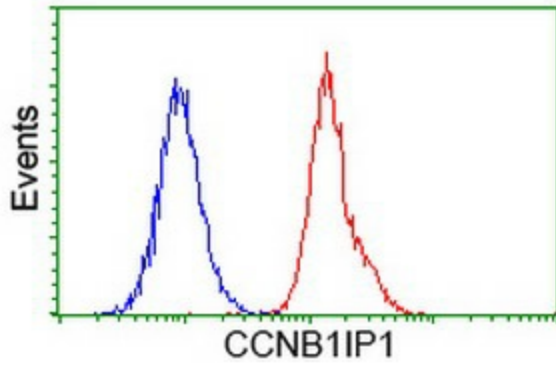
Immunohistochemical staining of paraffin-embedded Carcinoma of Human prostate tissue using anti-CCNB1IP1 mouse monoclonal antibody. (Heat-induced epitope retrieval by 10mM citric buffer, pH6.0, 100°C for 10min, [TA502700])



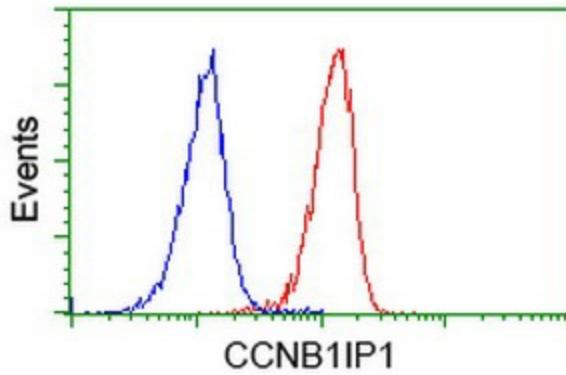
Immunohistochemical staining of paraffin-embedded Carcinoma of Human bladder tissue using anti-CCNB1IP1 mouse monoclonal antibody. (Heat-induced epitope retrieval by 10mM citric buffer, pH6.0, 100°C for 10min, [TA502700])



Immunohistochemical staining of paraffin-embedded Human lymph node tissue within the normal limits using anti-CCNB1IP1 mouse monoclonal antibody. (Heat-induced epitope retrieval by 10mM citric buffer, pH6.0, 100°C for 10min, [TA502700])



Flow cytometric Analysis of HeLa cells, using anti-CCNB1IP1 antibody ([TA502700]), (Red), compared to a nonspecific negative control antibody, (Blue).



Flow cytometric Analysis of Jurkat cells, using anti-CCNB1IP1 antibody ([TA502700]), (Red), compared to a nonspecific negative control antibody, (Blue).