

Product datasheet for **TA502698S**

DCK Mouse Monoclonal Antibody [Clone ID: OTI16G6]

Product data:

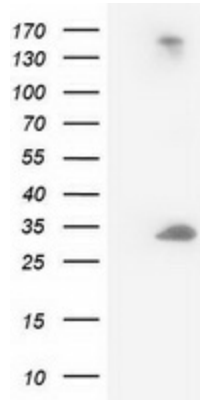
Product Type:	Primary Antibodies
Clone Name:	OTI16G6
Applications:	FC, IHC, WB
Recommended Dilution:	WB 1:500~2000, IHC 1:150, FLOW 1:100
Reactivity:	Human, Mouse, Rat
Host:	Mouse
Isotype:	IgG1
Clonality:	Monoclonal
Immunogen:	Full length human recombinant protein of human DCK (NP_000779) produced in HEK293T cell.
Formulation:	PBS (pH 7.3) containing 1% BSA, 50% glycerol and 0.02% sodium azide.
Concentration:	1 mg/ml
Purification:	Purified from mouse ascites fluids or tissue culture supernatant by affinity chromatography (protein A/G)
Conjugation:	Unconjugated
Storage:	Store at -20°C as received.
Stability:	Stable for 12 months from date of receipt.
Predicted Protein Size:	30.3 kDa
Gene Name:	deoxycytidine kinase
Database Link:	NP_000779 Entrez Gene 13178 Mouse Entrez Gene 79127 Rat Entrez Gene 1633 Human P27707
Background:	Deoxycytidine kinase (DCK) is required for the phosphorylation of several deoxyribonucleosides and their nucleoside analogs. Deficiency of DCK is associated with resistance to antiviral and anticancer chemotherapeutic agents. Conversely, increased deoxycytidine kinase activity is associated with increased activation of these compounds to cytotoxic nucleoside triphosphate derivatives. DCK is clinically important because of its relationship to drug resistance and sensitivity. [provided by RefSeq, Jul 2008]



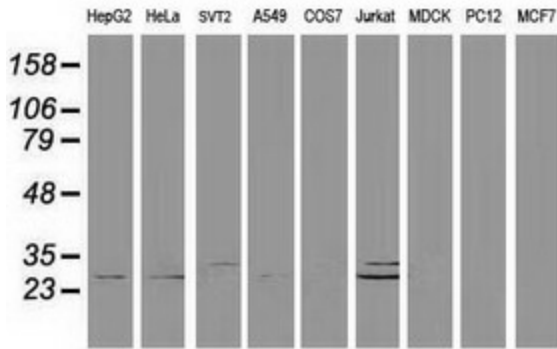
[View online »](#)

Synonyms: MGC117410; MGC138632
Protein Families: Druggable Genome
Protein Pathways: Purine metabolism, Pyrimidine metabolism

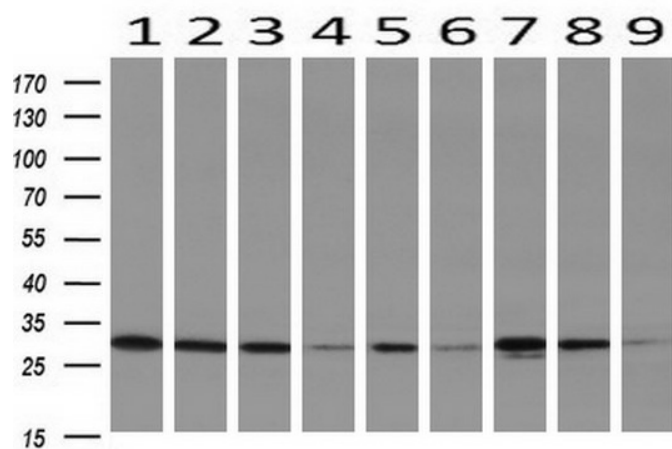
Product images:



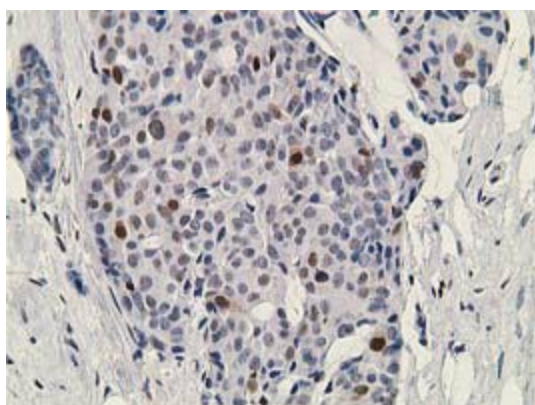
HEK293T cells were transfected with the pCMV6-ENTRY control (Cat# [PS100001], Left lane) or pCMV6-ENTRY DCK (Cat# [RC210767], Right lane) cDNA for 48 hrs and lysed. Equivalent amounts of cell lysates (5 ug per lane) were separated by SDS-PAGE and immunoblotted with anti-DCK (Cat# [TA502698]). Positive lysates [LY400272] (100ug) and [LC400272] (20ug) can be purchased separately from OriGene.



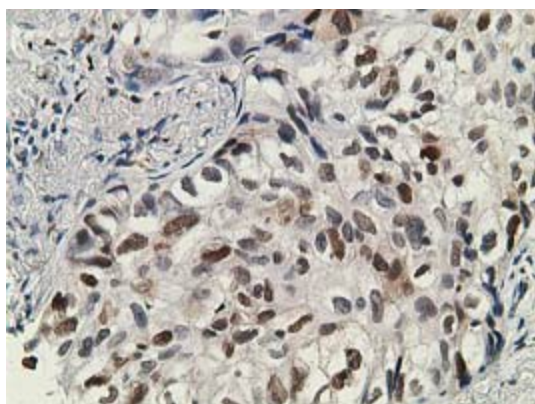
Western blot analysis of extracts (35ug) from 9 different cell lines by using anti-DCK monoclonal antibody (HepG2: human; HeLa: human; SVT2: mouse; A549: human; COS7: monkey; Jurkat: human; MDCK: canine; PC12: rat; MCF7: human).



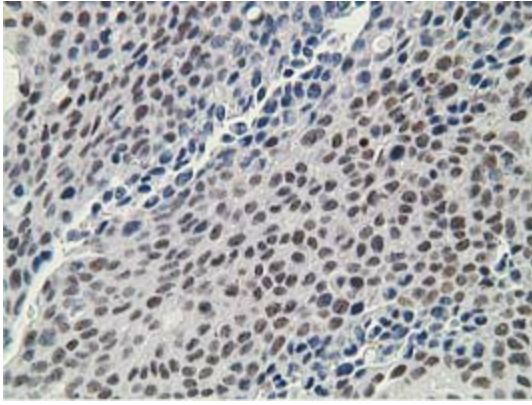
Western blot analysis of extracts (10ug) from 9 Human tissue by using anti-DCK monoclonal antibody at 1:200 (1: Testis; 2: Omentum; 3: Uterus; 4: Breast; 5: Brain; 6: Liver; 7: Ovary; 8: Thyroid gland; 9: colon).



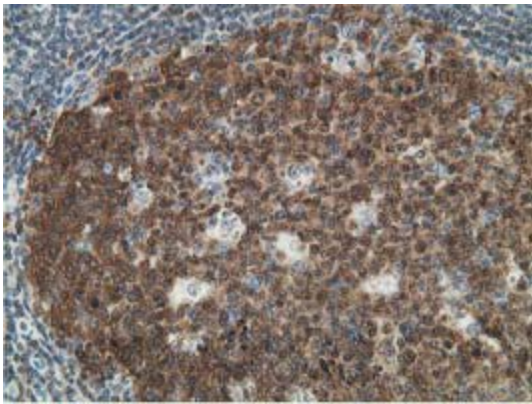
Immunohistochemical staining of paraffin-embedded Adenocarcinoma of Human breast tissue using anti-DCK mouse monoclonal antibody. (Heat-induced epitope retrieval by 10mM citric buffer, pH6.0, 100°C for 10min, [TA502698])



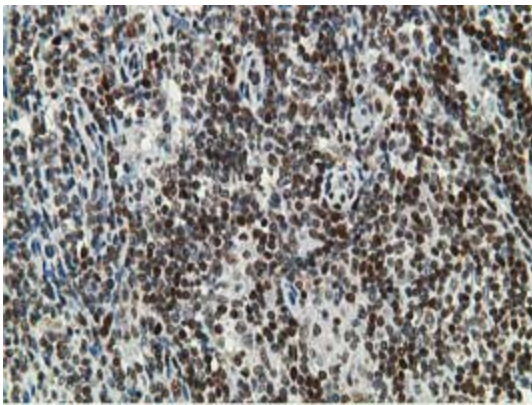
Immunohistochemical staining of paraffin-embedded Carcinoma of Human lung tissue using anti-DCK mouse monoclonal antibody. (Heat-induced epitope retrieval by 10mM citric buffer, pH6.0, 100°C for 10min, [TA502698])



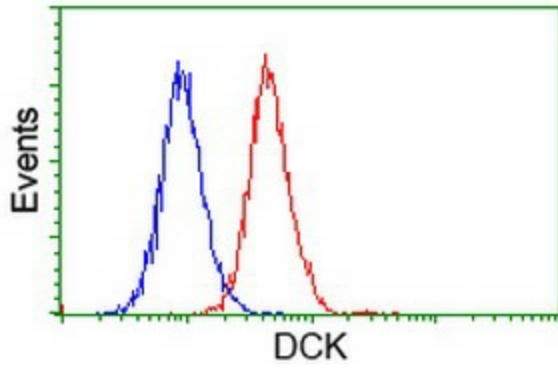
Immunohistochemical staining of paraffin-embedded Carcinoma of Human bladder tissue using anti-DCK mouse monoclonal antibody. (Heat-induced epitope retrieval by 10mM citric buffer, pH6.0, 100°C for 10min, [TA502698])



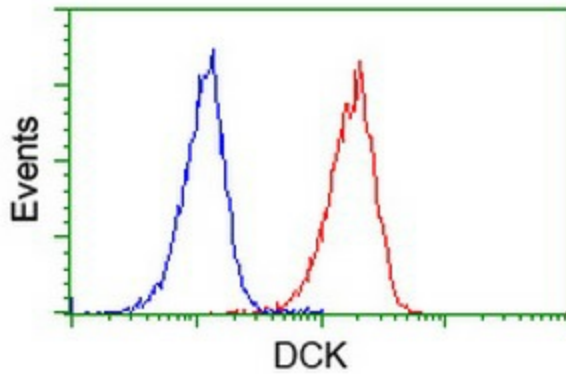
Immunohistochemical staining of paraffin-embedded Human lymph node tissue within the normal limits using anti-DCK mouse monoclonal antibody. (Heat-induced epitope retrieval by 10mM citric buffer, pH6.0, 100°C for 10min, [TA502698])



Immunohistochemical staining of paraffin-embedded Human Lymphoma tissue using anti-DCK mouse monoclonal antibody. (Heat-induced epitope retrieval by 10mM citric buffer, pH6.0, 100°C for 10min, [TA502698])



Flow cytometric Analysis of HeLa cells, using anti-DCK antibody ([TA502698]), (Red), compared to a nonspecific negative control antibody, (Blue).



Flow cytometric Analysis of Jurkat cells, using anti-DCK antibody ([TA502698]), (Red), compared to a nonspecific negative control antibody, (Blue).