

## Product datasheet for **TA502692AM**

### Guanylate kinase (GUK1) Mouse Monoclonal Antibody (Biotin conjugated) [Clone ID: OTI4A8]

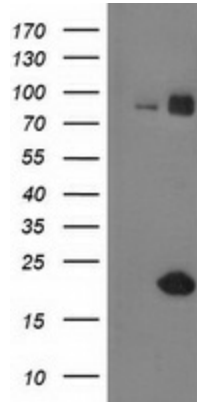
#### Product data:

Product Type:	Primary Antibodies
Clone Name:	OTI4A8
Applications:	FC, IHC, WB
Recommended Dilution:	WB 1:500~2000, IHC 1:150, FLOW 1:100
Reactivity:	Human, Mouse, Rat
Host:	Mouse
Isotype:	IgG1
Clonality:	Monoclonal
Immunogen:	Full length human recombinant protein of human GUK1 (NP_000849) produced in HEK293T cell.
Formulation:	PBS (pH 7.3) containing 1% BSA, 50% glycerol and 0.02% sodium azide.
Concentration:	0.5 mg/ml
Purification:	Purified from mouse ascites fluids or tissue culture supernatant by affinity chromatography (protein A/G)
Conjugation:	Biotin
Storage:	Store at -20°C as received.
Stability:	Stable for 12 months from date of receipt.
Predicted Protein Size:	21.5 kDa
Gene Name:	guanylate kinase 1
Database Link:	<a href="#">NP_000849</a> <a href="#">Entrez Gene 14923 Mouse</a> <a href="#">Entrez Gene 303179 Rat</a> <a href="#">Entrez Gene 2987 Human</a> <a href="#">Q16774</a>
Synonyms:	GMK
Protein Families:	Druggable Genome
Protein Pathways:	Metabolic pathways, Purine metabolism

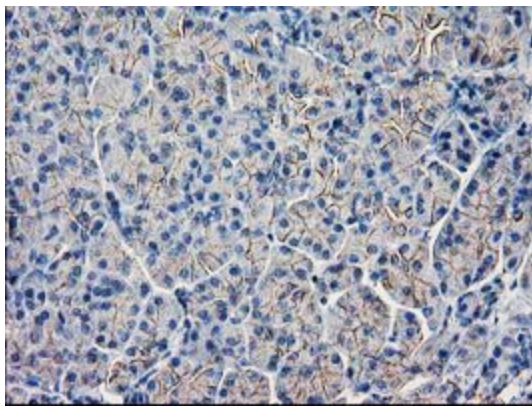


[View online »](#)

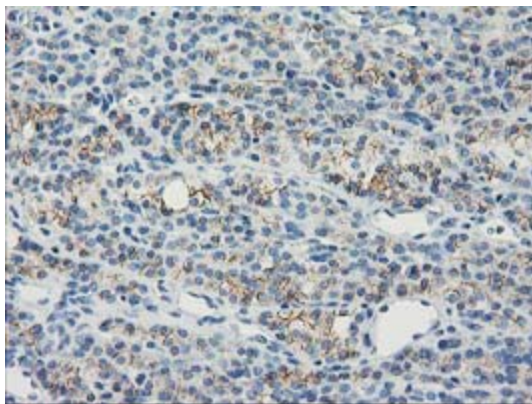
**Product images:**



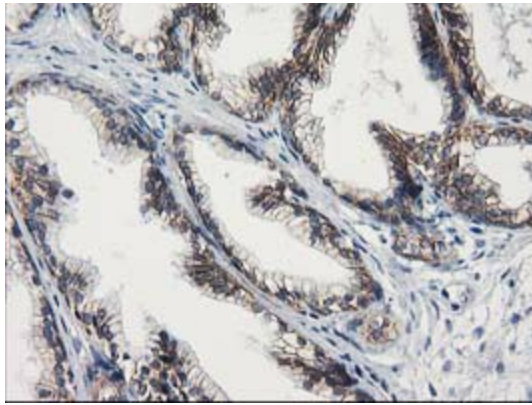
HEK293T cells were transfected with the pCMV6-ENTRY control (Cat# [PS100001], Left lane) or pCMV6-ENTRY GUK1 (Cat# [RC202510], Right lane) cDNA for 48 hrs and lysed. Equivalent amounts of cell lysates (5 ug per lane) were separated by SDS-PAGE and immunoblotted with anti-GUK1 (Cat# [TA502692]). Positive lysates [LY400303] (100ug) and [LC400303] (20ug) can be purchased separately from OriGene.



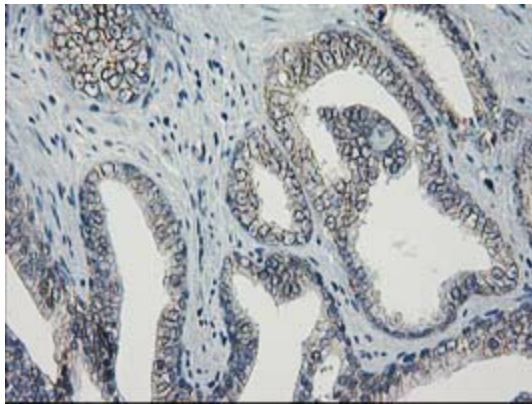
Immunohistochemical staining of paraffin-embedded Human pancreas tissue within the normal limits using anti-GUK1 mouse monoclonal antibody. (Heat-induced epitope retrieval by 10mM citric buffer, pH6.0, 100°C for 10min, [TA502692])



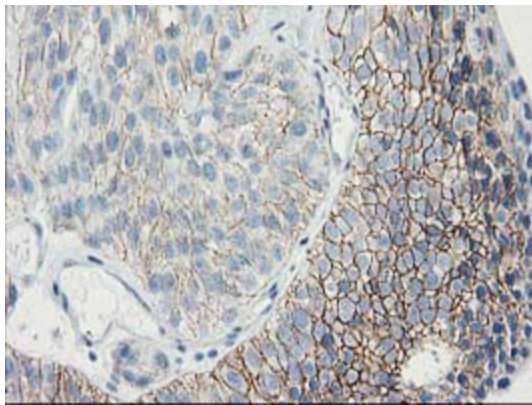
Immunohistochemical staining of paraffin-embedded Carcinoma of Human thyroid tissue using anti-GUK1 mouse monoclonal antibody. (Heat-induced epitope retrieval by 10mM citric buffer, pH6.0, 100°C for 10min, [TA502692])



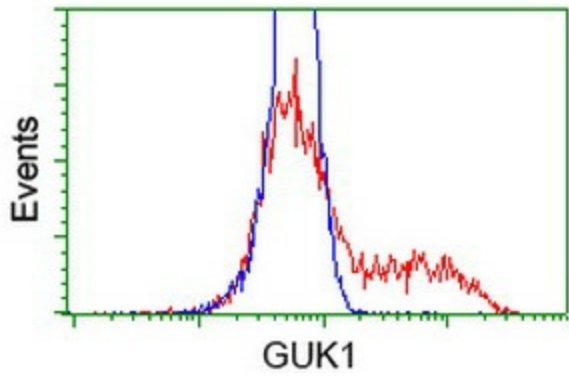
Immunohistochemical staining of paraffin-embedded Human prostate tissue within the normal limits using anti-GUK1 mouse monoclonal antibody. (Heat-induced epitope retrieval by 10mM citric buffer, pH6.0, 100°C for 10min, [TA502692])



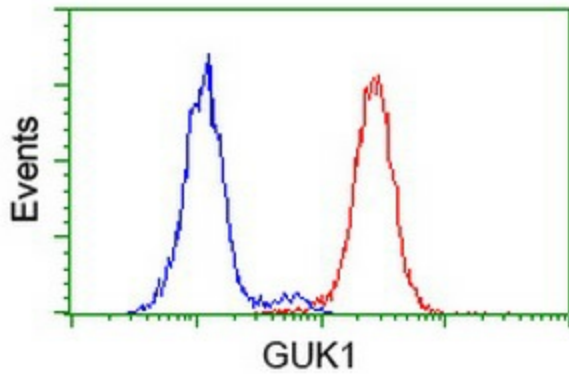
Immunohistochemical staining of paraffin-embedded Carcinoma of Human prostate tissue using anti-GUK1 mouse monoclonal antibody. (Heat-induced epitope retrieval by 10mM citric buffer, pH6.0, 100°C for 10min, [TA502692])



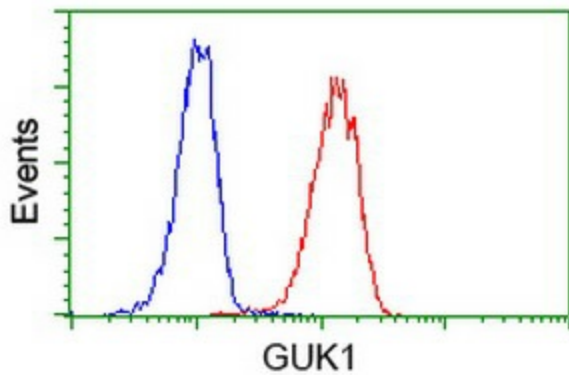
Immunohistochemical staining of paraffin-embedded Carcinoma of Human bladder tissue using anti-GUK1 mouse monoclonal antibody. (Heat-induced epitope retrieval by 10mM citric buffer, pH6.0, 100°C for 10min, [TA502692])



HEK293T cells transfected with either [RC202510] overexpress plasmid (Red) or empty vector control plasmid (Blue) were immunostained by anti-GUK1 antibody ([TA502692]), and then analyzed by flow cytometry.



Flow cytometric Analysis of HeLa cells, using anti-GUK1 antibody ([TA502692]), (Red), compared to a nonspecific negative control antibody (TA50011), (Blue).



Flow cytometric Analysis of Jurkat cells, using anti-GUK1 antibody ([TA502692]), (Red), compared to a nonspecific negative control antibody (TA50011), (Blue).