

## Product datasheet for **TA502689S**

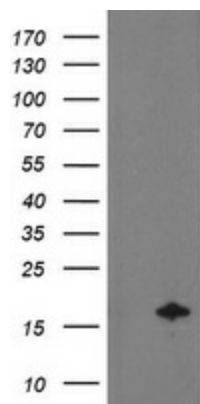
### NDUFA7 Mouse Monoclonal Antibody [Clone ID: OTI2D4]

#### Product data:

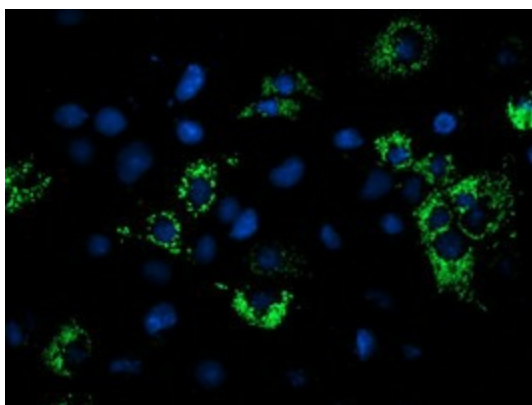
|                         |  |
|-------------------------|--|
| Product Type:           | Primary Antibodies   |
| Clone Name:             | OTI2D4   |
| Applications:           | IF, WB   |
| Recommended Dilution:   | WB 1:2000, IF 1:100  |
| Reactivity:             | Human, Mouse, Rat  |
| Host:                   | Mouse  |
| Isotype:                | IgG1   |
| Clonality:              | Monoclonal   |
| Immunogen:              | Full length human recombinant protein of human NDUFA7 (NP_004992) produced in HEK293T cell.  |
| Formulation:            | PBS (pH 7.3) containing 1% BSA, 50% glycerol and 0.02% sodium azide.   |
| Concentration:          | 0.29 mg/ml   |
| Purification:           | Purified from mouse ascites fluids or tissue culture supernatant by affinity chromatography (protein A/G)  |
| Conjugation:            | Unconjugated   |
| Storage:                | Store at -20°C as received.  |
| Stability:              | Stable for 12 months from date of receipt.   |
| Predicted Protein Size: | 12.4 kDa   |
| Gene Name:              | NADH:ubiquinone oxidoreductase subunit A7  |
| Database Link:          | <a href="#">NP_004992</a><br><a href="#">Entrez Gene 66416 Mouse</a> <a href="#">Entrez Gene 299643 Rat</a> <a href="#">Entrez Gene 4701 Human</a><br><a href="#">O95182</a> |
| Synonyms:               | B14.5a; CI-B14.5a  |
| Protein Pathways:       | Alzheimer's disease, Huntington's disease, Metabolic pathways, Oxidative phosphorylation, Parkinson's disease  |



[View online »](#)

**Product images:**

HEK293T cells were transfected with the pCMV6-ENTRY control (Left lane) or pCMV6-ENTRY NDUFA7 ([RC200534], Right lane) cDNA for 48 hrs and lysed. Equivalent amounts of cell lysates (5 ug per lane) were separated by SDS-PAGE and immunoblotted with anti-NDUFA7. Positive lysates [LY417603] (100ug) and [LC417603] (20ug) can be purchased separately from OriGene.



Anti-NDUFA7 mouse monoclonal antibody ([TA502689]) immunofluorescent staining of COS7 cells transiently transfected by pCMV6-ENTRY NDUFA7 ([RC200534]).