

## Product datasheet for **TA502687AM**

### **KCTD14 Mouse Monoclonal Antibody (Biotin conjugated) [Clone ID: OTI3C7]**

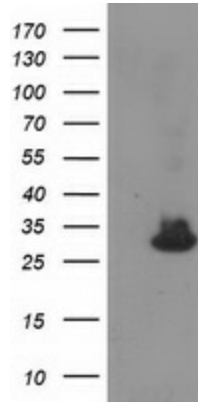
#### **Product data:**

<b>Product Type:</b>	Primary Antibodies
<b>Clone Name:</b>	OTI3C7
<b>Applications:</b>	FC, IF, WB
<b>Recommended Dilution:</b>	WB 1:2000, IF 1:100, FLOW 1:100
<b>Reactivity:</b>	Human
<b>Host:</b>	Mouse
<b>Isotype:</b>	IgG1
<b>Clonality:</b>	Monoclonal
<b>Immunogen:</b>	Full length human recombinant protein of human KCTD14 (NP_076419) produced in HEK293T cell.
<b>Formulation:</b>	PBS (pH 7.3) containing 1% BSA, 50% glycerol and 0.02% sodium azide.
<b>Concentration:</b>	0.5 mg/ml
<b>Purification:</b>	Purified from mouse ascites fluids or tissue culture supernatant by affinity chromatography (protein A/G)
<b>Conjugation:</b>	Biotin
<b>Storage:</b>	Store at -20°C as received.
<b>Stability:</b>	Stable for 12 months from date of receipt.
<b>Predicted Protein Size:</b>	29.4 kDa
<b>Gene Name:</b>	potassium channel tetramerization domain containing 14
<b>Database Link:</b>	<a href="#">NP_076419</a> <a href="#">Entrez Gene 65987 Human</a> <a href="#">Q9BQ13</a>
<b>Synonyms:</b>	MGC2376
<b>Protein Families:</b>	Ion Channels: Other

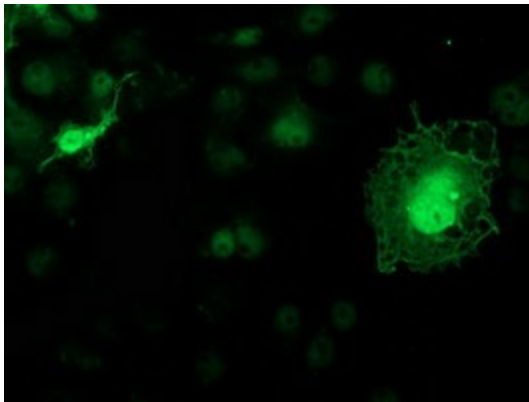


[View online »](#)

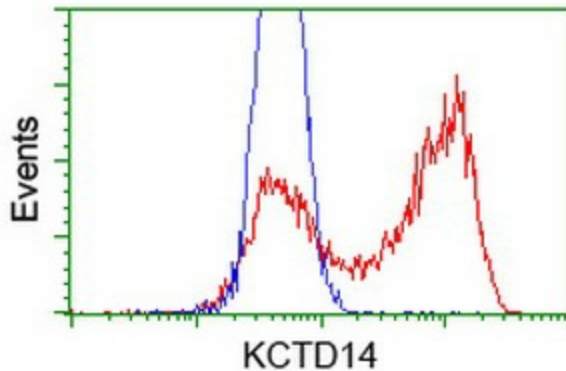
**Product images:**



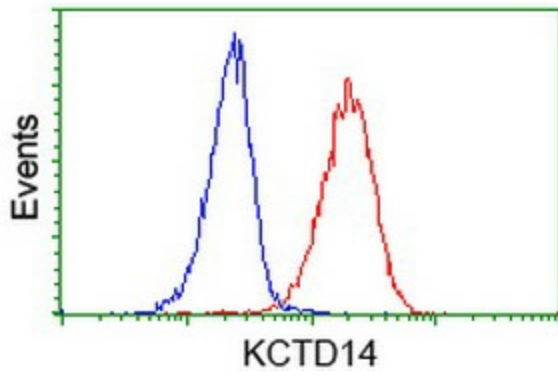
HEK293T cells were transfected with the pCMV6-ENTRY control (Left lane) or pCMV6-ENTRY KCTD14 ([RC200745], Right lane) cDNA for 48 hrs and lysed. Equivalent amounts of cell lysates (5 ug per lane) were separated by SDS-PAGE and immunoblotted with anti-KCTD14. Positive lysates [LY411435] (100ug) and [LC411435] (20ug) can be purchased separately from OriGene.



Anti-KCTD14 mouse monoclonal antibody ([TA502687]) immunofluorescent staining of COS7 cells transiently transfected by pCMV6-ENTRY KCTD14 ([RC200745]).



HEK293T cells transfected with either [RC200745] overexpress plasmid (Red) or empty vector control plasmid (Blue) were immunostained by anti-KCTD14 antibody ([TA502687]), and then analyzed by flow cytometry.



Flow cytometric Analysis of Jurkat cells, using anti-KCTD14 antibody ([TA502687]), (Red), compared to a nonspecific negative control antibody (TA50011), (Blue).