

Product datasheet for **TA502678BM**

SULT1C2 Mouse Monoclonal Antibody (HRP conjugated) [Clone ID: OTI5H1]

Product data:

Product Type:	Primary Antibodies
Clone Name:	OTI5H1
Applications:	WB
Recommended Dilution:	WB 1:500~2000
Reactivity:	Human, Dog, Monkey, Mouse
Host:	Mouse
Isotype:	IgG2b
Clonality:	Monoclonal
Immunogen:	Full length human recombinant protein of human SULT1C2(NP_001047) produced in HEK293T cell.
Formulation:	PBS (pH 7.3) containing 1% BSA, 50% glycerol.
Concentration:	0.5 mg/ml
Purification:	Purified from mouse ascites fluids or tissue culture supernatant by affinity chromatography (protein A/G)
Conjugation:	HRP
Storage:	Store at -20°C as received.
Stability:	Stable for 12 months from date of receipt.
Predicted Protein Size:	34.7 kDa
Gene Name:	sulfotransferase family 1C member 2
Database Link:	NP_001047 Entrez Gene 69083 Mouse Entrez Gene 474543 Dog Entrez Gene 693398 Monkey Entrez Gene 6819 Human O00338



[View online »](#)

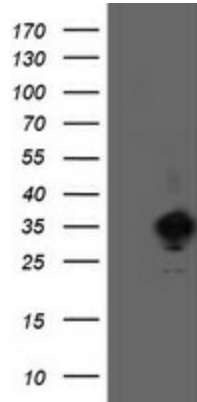
Background:

Sulfotransferase enzymes catalyze the sulfate conjugation of many hormones, neurotransmitters, drugs, and xenobiotic compounds. These cytosolic enzymes are different in their tissue distributions and substrate specificities. The gene structure (number and length of exons) is similar among family members. This gene encodes a protein that belongs to the SULT1 subfamily, responsible for transferring a sulfo moiety from PAPS to phenol-containing compounds. Two alternatively spliced transcript variants encoding different isoforms have been described for this gene. [provided by RefSeq]

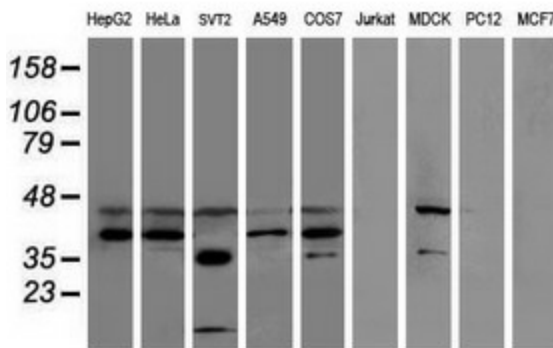
Synonyms:

humSULTC2; ST1C1; ST1C2; SULT1C1

Product images:



HEK293T cells were transfected with the pCMV6-ENTRY control (Left lane) or pCMV6-ENTRY SULT1C2 [RC202775], Right lane) cDNA for 48 hrs and lysed. Equivalent amounts of cell lysates (5 ug per lane) were separated by SDS-PAGE and immunoblotted with anti-SULT1C2. Positive lysates [LY420736] (100ug) and [LC420736] (20ug) can be purchased separately from OriGene.



Western blot analysis of extracts (35ug) from 9 different cell lines by using anti-SULT1C2 monoclonal antibody.