

Product datasheet for **TA502672AM**

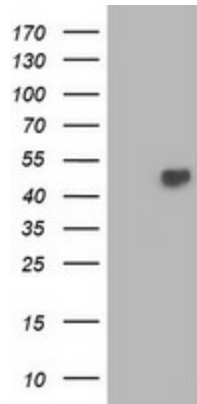
TBCEL Mouse Monoclonal Antibody (Biotin conjugated) [Clone ID: OTI2A9]

Product data:

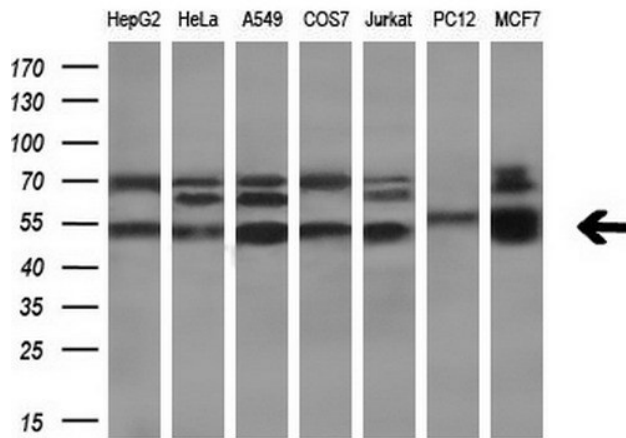
Product Type:	Primary Antibodies
Clone Name:	OTI2A9
Applications:	IHC, WB
Recommended Dilution:	WB 1:2000, IHC 1:150
Reactivity:	Human, Mouse, Rat
Host:	Mouse
Isotype:	IgG2a
Clonality:	Monoclonal
Immunogen:	Full length human recombinant protein of human TBCEL (NP_689928) produced in HEK293T cell.
Formulation:	PBS (pH 7.3) containing 1% BSA, 50% glycerol and 0.02% sodium azide.
Concentration:	0.5 mg/ml
Purification:	Purified from mouse ascites fluids or tissue culture supernatant by affinity chromatography (protein A/G)
Conjugation:	Biotin
Storage:	Store at -20°C as received.
Stability:	Stable for 12 months from date of receipt.
Predicted Protein Size:	48 kDa
Gene Name:	tubulin folding cofactor E like
Database Link:	NP_689928 Entrez Gene 272589 MouseEntrez Gene 315591 RatEntrez Gene 219899 Human Q5QJ74
Synonyms:	EI; LRRC35
Protein Families:	Druggable Genome



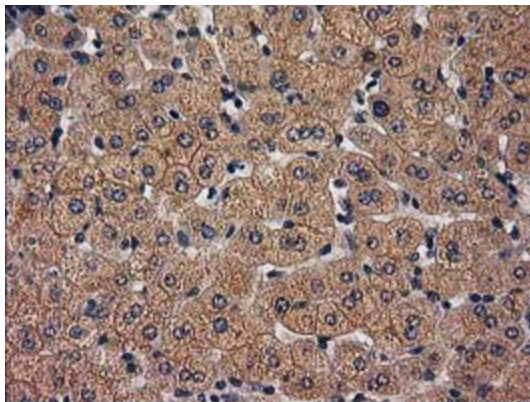
[View online »](#)

Product images:


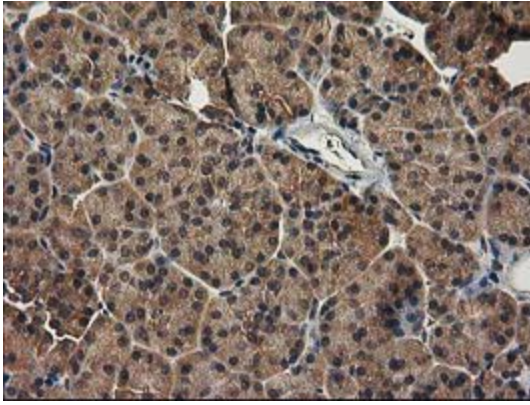
HEK293T cells were transfected with the pCMV6-ENTRY control (Cat# [PS100001], Left lane) or pCMV6-ENTRY TBCEL (Cat# [RC215292], Right lane) cDNA for 48 hrs and lysed. Equivalent amounts of cell lysates (5 ug per lane) were separated by SDS-PAGE and immunoblotted with anti-TBCEL (Cat# [TA502672]). Positive lysates [LY407335] (100ug) and [LC407335] (20ug) can be purchased separately from OriGene.



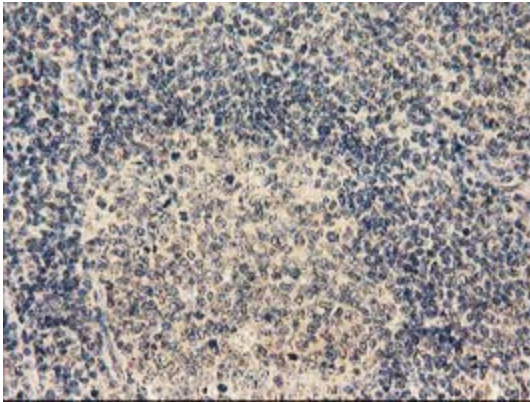
Western blot analysis of extracts (10ug) from 7 different cell lines by using anti-TBCEL monoclonal antibody (1:200).



Immunohistochemical staining of paraffin-embedded Human liver tissue within the normal limits using anti-TBCEL mouse monoclonal antibody. (Heat-induced epitope retrieval by 10mM citric buffer, pH6.0, 100°C for 10min, [TA502672])



Immunohistochemical staining of paraffin-embedded Human pancreas tissue within the normal limits using anti-TBCEL mouse monoclonal antibody. (Heat-induced epitope retrieval by 10mM citric buffer, pH6.0, 100°C for 10min, [TA502672])



Immunohistochemical staining of paraffin-embedded Human lymph node tissue within the normal limits using anti-TBCEL mouse monoclonal antibody. (Heat-induced epitope retrieval by 10mM citric buffer, pH6.0, 100°C for 10min, [TA502672])