

## Product datasheet for **TA502671M**

### **HAND1 Mouse Monoclonal Antibody [Clone ID: OTI1G10]**

#### **Product data:**

Product Type:	Primary Antibodies
Clone Name:	OTI1G10
Applications:	FC, IF, WB
Recommended Dilution:	WB 1:500, IF 1:100, FLOW 1:100
Reactivity:	Human, Mouse, Rat
Host:	Mouse
Isotype:	IgG2b
Clonality:	Monoclonal
Immunogen:	Full length human recombinant protein of human HAND1 (NP_004812) produced in E.coli.
Formulation:	PBS (pH 7.3) containing 1% BSA, 50% glycerol and 0.02% sodium azide.
Concentration:	1 mg/ml
Purification:	Purified from mouse ascites fluids or tissue culture supernatant by affinity chromatography (protein A/G)
Conjugation:	Unconjugated
Storage:	Store at -20°C as received.
Stability:	Stable for 12 months from date of receipt.
Predicted Protein Size:	23.4 kDa
Gene Name:	heart and neural crest derivatives expressed 1
Database Link:	<a href="#">NP_004812</a> <a href="#">Entrez Gene 15110 Mouse</a> <a href="#">Entrez Gene 59112 Rat</a> <a href="#">Entrez Gene 9421 Human</a> <a href="#">O96004</a>

**Background:** The protein encoded by this gene belongs to the basic helix-loop-helix family of transcription factors. This gene product is one of two closely related family members, the HAND proteins, which are asymmetrically expressed in the developing ventricular chambers and play an essential role in cardiac morphogenesis. Working in a complementary fashion, they function in the formation of the right ventricle and aortic arch arteries, implicating them as mediators of congenital heart disease. In addition, it has been suggested that this transcription factor may be required for early trophoblast differentiation. [provided by RefSeq]


[View online »](#)

**Synonyms:** bHLHa27; eHand; Hxt; Thing1

**Note:** WB application: Only overexpression results are guaranteed, not endogenous.

**Protein Families:** Druggable Genome, ES Cell Differentiation/IPS, Transcription Factors

**Product images:**

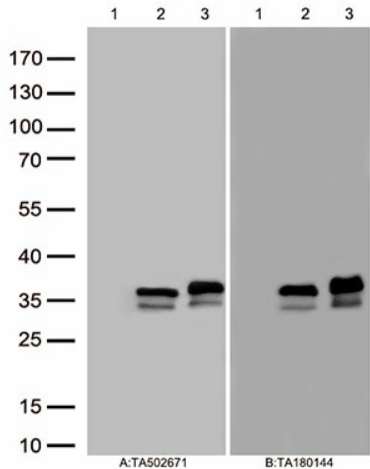
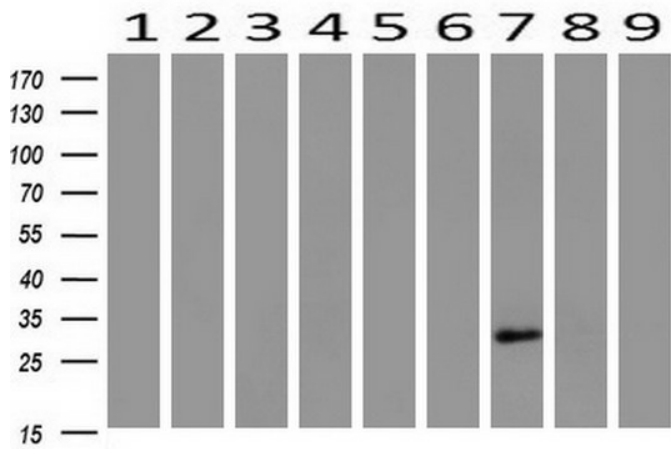
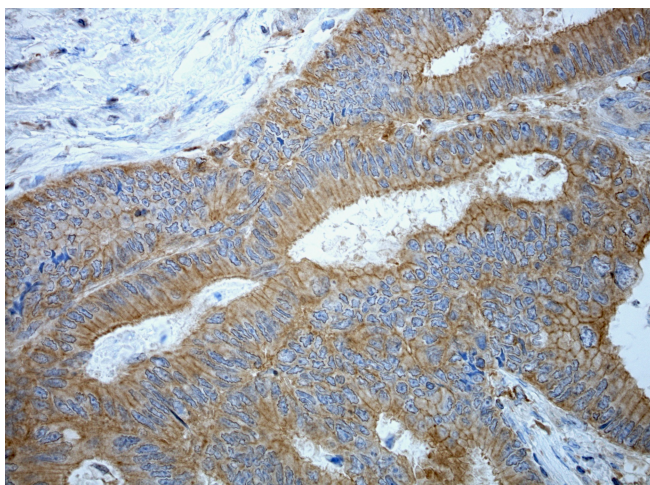


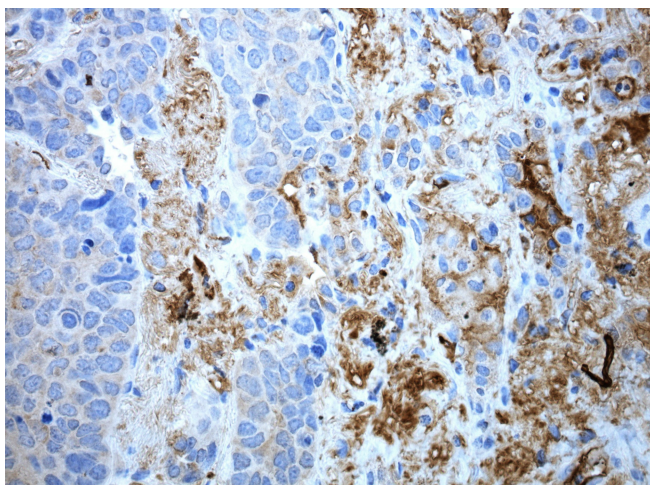
Figure A, Western blot analysis of overexpressed lysates(25ug per lane) from HEK293T cells transfected with empty plasmid ([PS100001], lane 1) , human HAND1 plasmid ([RC200513], lane 2), mouse HAND1 plasmid ([MR202396], lane 3) using anti-HAND1 antibody [TA502671] (1:500).  
Figure B, Western blot analysis of the same samples as figure A with anti-DDK antibody ([TA180144], 1:1000)



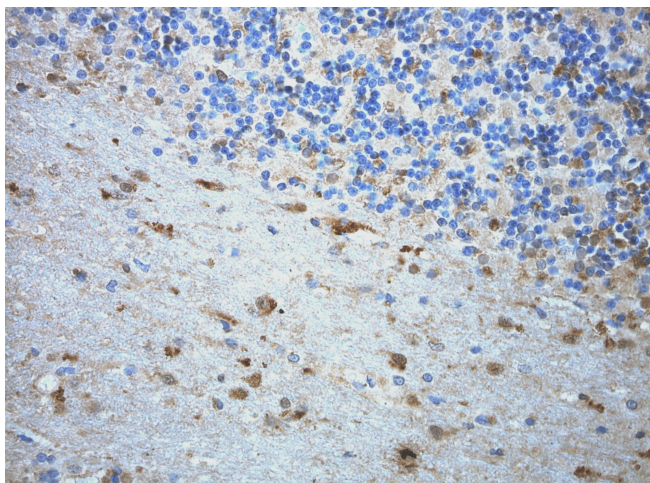
Western blot analysis of extracts (10ug) from 9 Human tissue by using anti-HAND1 monoclonal antibody at 1:200 (1: Testis; 2: Omentum; 3: Uterus; 4: Breast; 5: Brain; 6: Liver; 7: Ovary; 8: Thyroid gland; 9: colon).



Immunohistochemical staining of paraffin-embedded colon cancer using anti-HAND1 antibody [TA502671] clone OTI1G10 mouse monoclonal antibody. Protocol used HIER TEE pH9.0 (cat# [B21-100]) and anti-HAND1 at 1:100 dilution. Detection was done with Polink1 Broad Mouse and Rabbit C/N [D11-18] with DAB Kit. Image 40x magnification.

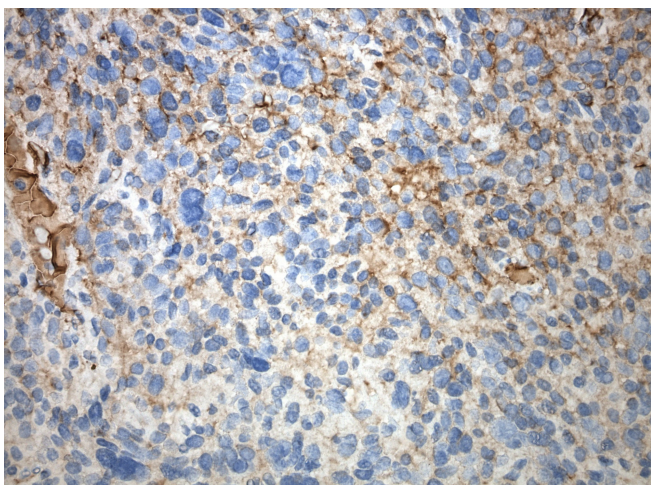


Immunohistochemical staining of paraffin-embedded lung cancer using anti-HAND1 antibody [TA502671] clone OTI1G10 mouse monoclonal antibody. HIER TEE pH9.0 (cat# [B21-100]) and anti-HAND1 at 1:100 dilution. Detection was done with Polink1 Broad Mouse and Rabbit C/N [D11-18] with DAB Kit. Image 40x magnification.

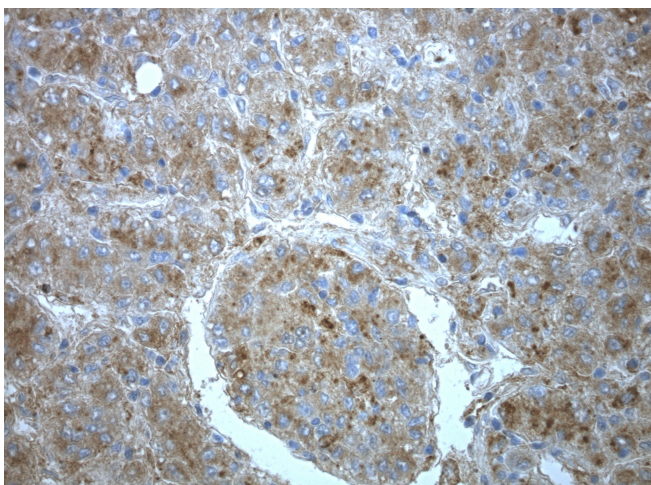


Immunohistochemical staining of paraffin-embedded normal brain using anti-HAND1 antibody [TA502671] clone OTI1G10 mouse monoclonal antibody. Protocol used HIER TEE pH9.0 (cat# [B21-100]) and anti-HAND1 at 1:100 dilution. Detection was done with Polink1 Broad Mouse and Rabbit C/N [D11-18] with DAB Kit. Image 40x magnification.





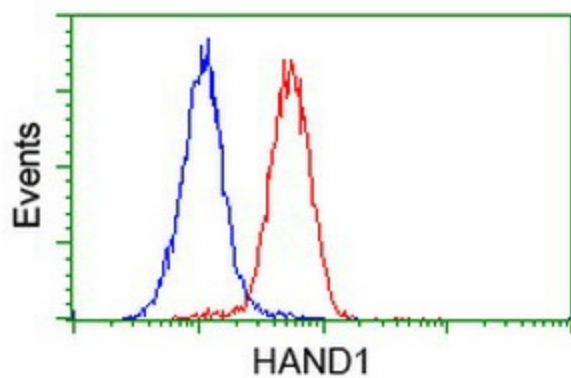
Immunohistochemical staining of paraffin-embedded melanoma using anti-HAND1 antibody [TA502671] clone OTI1G10 mouse monoclonal antibody. Protocol used HIER TEE pH9.0 (cat# [B21-100]) and anti-HAND1 at 1:100 dilution. Detection was done with Polink1 Broad Mouse and Rabbit C/N [D11-18] with DAB Kit. Image 40x magnification.



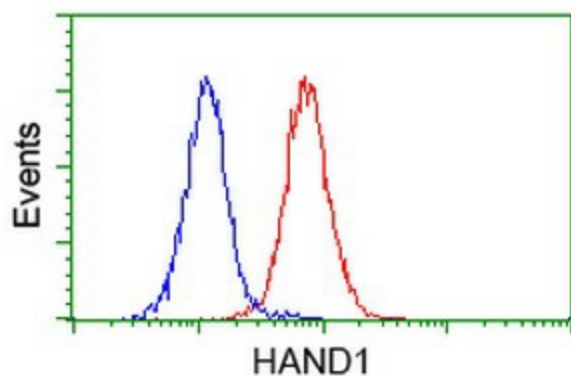
Immunohistochemical staining of paraffin-embedded pancreatic cancer using anti-HAND1 antibody [TA502671] clone OTI1G10 mouse monoclonal antibody. Protocol used HIER TEE pH9.0 (cat# [B21-100]) and anti-HAND1 at 1:100 dilution. Detection was done with Polink1 Broad Mouse and Rabbit C/N [D11-18] with DAB Kit. Image 40x magnification.



Anti-HAND1 mouse monoclonal antibody ([TA502671]) immunofluorescent staining of COS7 cells transiently transfected by pCMV6-ENTRY HAND1 ([RC200513]).



Flow cytometric Analysis of HeLa cells, using anti-HAND1 antibody ([TA502671]), (Red), compared to a nonspecific negative control antibody (TA50011), (Blue).



Flow cytometric Analysis of Jurkat cells, using anti-HAND1 antibody ([TA502671]), (Red), compared to a nonspecific negative control antibody (TA50011), (Blue).