

## Product datasheet for **TA502670AM**

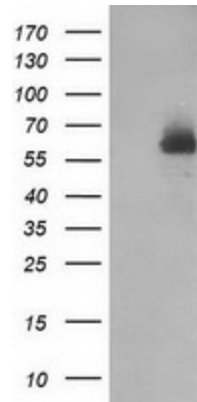
### DEF8 Mouse Monoclonal Antibody (Biotin conjugated) [Clone ID: OTI2H4]

#### Product data:

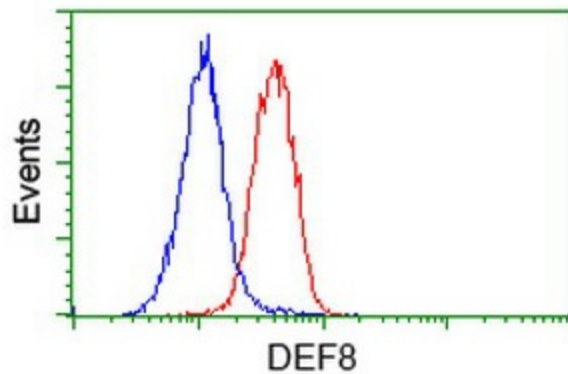
|                         |   |
|-------------------------|---|
| Product Type:           | Primary Antibodies  |
| Clone Name:             | OTI2H4  |
| Applications:           | FC, WB  |
| Recommended Dilution:   | WB 1:500, FLOW 1:100  |
| Reactivity:             | Human, Mouse, Rat   |
| Host:                   | Mouse   |
| Isotype:                | IgG2a   |
| Clonality:              | Monoclonal  |
| Immunogen:              | Full length human recombinant protein of human DEF8 (NP_997397) produced in HEK293T cell.   |
| Formulation:            | PBS (pH 7.3) containing 1% BSA, 50% glycerol and 0.02% sodium azide.  |
| Concentration:          | 0.5 mg/ml   |
| Purification:           | Purified from mouse ascites fluids or tissue culture supernatant by affinity chromatography (protein A/G)   |
| Conjugation:            | Biotin  |
| Storage:                | Store at -20°C as received.   |
| Stability:              | Stable for 12 months from date of receipt.  |
| Predicted Protein Size: | 58.5 kDa  |
| Gene Name:              | differentially expressed in FDCP 8 homolog  |
| Database Link:          | <a href="#">NP_997397</a><br><a href="#">Entrez Gene 23854 Mouse</a> <a href="#">Entrez Gene 307973 Rat</a> <a href="#">Entrez Gene 54849 Human</a><br><a href="#">Q6ZN54</a> |
| Synonyms:               | FLJ20186; MGC104349   |



[View online »](#)

**Product images:**

HEK293T cells were transfected with the pCMV6-ENTRY control (Left lane) or pCMV6-ENTRY DEF8 ([RC224669], Right lane) cDNA for 48 hrs and lysed. Equivalent amounts of cell lysates (5 ug per lane) were separated by SDS-PAGE and immunoblotted with anti-DEF8. Positive lysates [LY403723] (100ug) and [LC403723] (20ug) can be purchased separately from OriGene.



Flow cytometric Analysis of HeLa cells, using anti-DEF8 antibody ([TA502670]), (Red), compared to a nonspecific negative control antibody (TA50011), (Blue).