

Product datasheet for **TA502669BM**

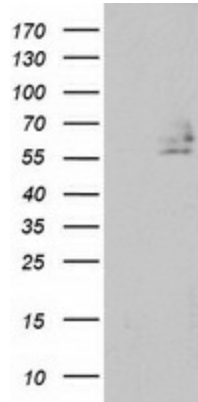
DEF8 Mouse Monoclonal Antibody (HRP conjugated) [Clone ID: OTI4B6]

Product data:

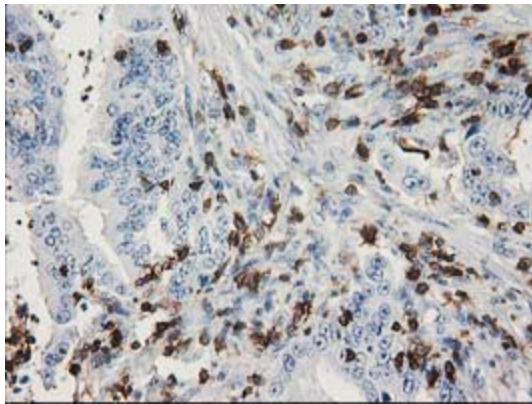
| | |
|-------------------------|---|
| Product Type: | Primary Antibodies |
| Clone Name: | OTI4B6 |
| Applications: | FC, IF, IHC, WB |
| Recommended Dilution: | WB 1:500, IHC 1:150, IF 1:100, FLOW 1:100 |
| Reactivity: | Human, Mouse, Rat |
| Host: | Mouse |
| Isotype: | IgG2a |
| Clonality: | Monoclonal |
| Immunogen: | Full length human recombinant protein of human DEF8 (NP_997397) produced in HEK293T cell. |
| Formulation: | PBS (pH 7.3) containing 1% BSA, 50% glycerol. |
| Concentration: | 0.5 mg/ml |
| Purification: | Purified from mouse ascites fluids or tissue culture supernatant by affinity chromatography (protein A/G) |
| Conjugation: | HRP |
| Storage: | Store at -20°C as received. |
| Stability: | Stable for 12 months from date of receipt. |
| Predicted Protein Size: | 58.5 kDa |
| Gene Name: | differentially expressed in FDCP 8 homolog |
| Database Link: | NP_997397 Entrez Gene 23854 Mouse Entrez Gene 307973 Rat Entrez Gene 54849 Human Q6ZN54 |
| Synonyms: | FLJ20186; MGC104349 |



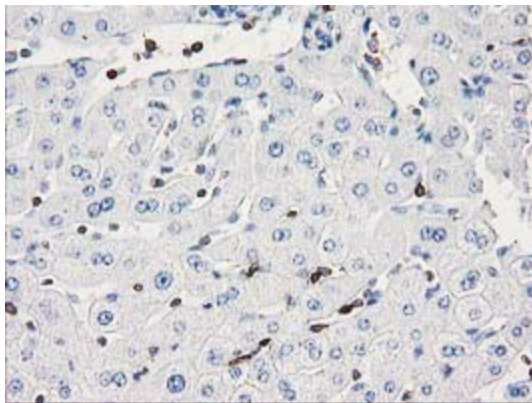
[View online »](#)

Product images:

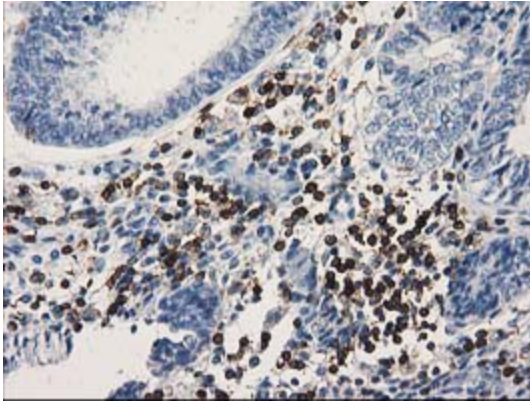
HEK293T cells were transfected with the pCMV6-ENTRY control (Cat# [PS100001], Left lane) or pCMV6-ENTRY DEF8 (Cat# [RC224669], Right lane) cDNA for 48 hrs and lysed. Equivalent amounts of cell lysates (5 ug per lane) were separated by SDS-PAGE and immunoblotted with anti-DEF8 (Cat# [TA502669]). Positive lysates [LY403723] (100ug) and [LC403723] (20ug) can be purchased separately from OriGene.



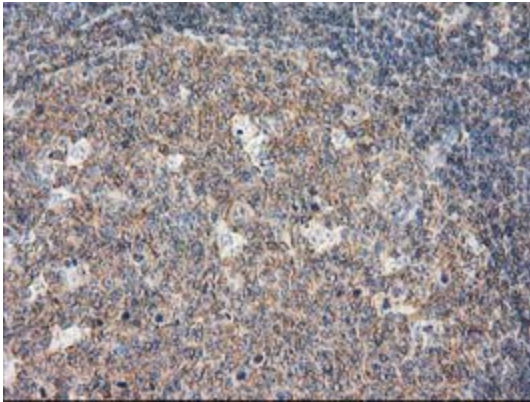
Immunohistochemical staining of paraffin-embedded Adenocarcinoma of Human colon tissue using anti-DEF8 mouse monoclonal antibody. (Heat-induced epitope retrieval by 10mM citric buffer, pH6.0, 100°C for 10min, [TA502669])



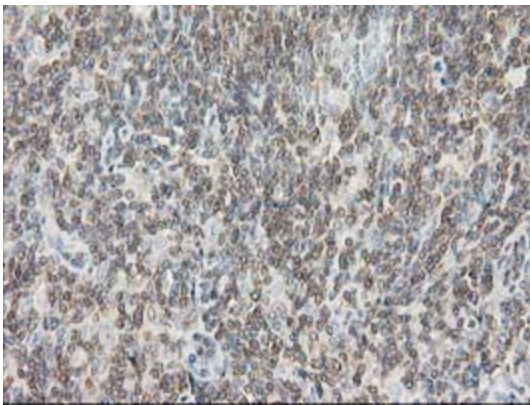
Immunohistochemical staining of paraffin-embedded Human liver tissue within the normal limits using anti-DEF8 mouse monoclonal antibody. (Heat-induced epitope retrieval by 10mM citric buffer, pH6.0, 100°C for 10min, [TA502669])



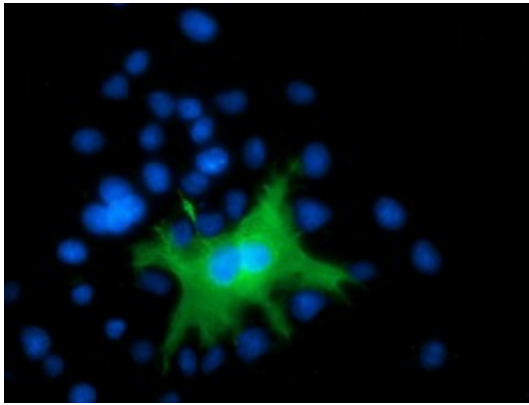
Immunohistochemical staining of paraffin-embedded Adenocarcinoma of Human endometrium tissue using anti-DEF8 mouse monoclonal antibody. (Heat-induced epitope retrieval by 10mM citric buffer, pH6.0, 100°C for 10min, [TA502669])



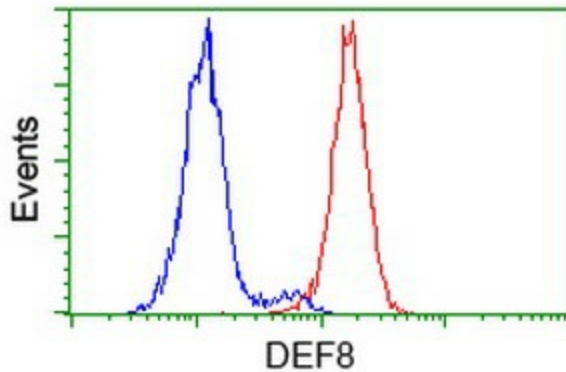
Immunohistochemical staining of paraffin-embedded Human lymph node tissue within the normal limits using anti-DEF8 mouse monoclonal antibody. (Heat-induced epitope retrieval by 10mM citric buffer, pH6.0, 100°C for 10min, [TA502669])



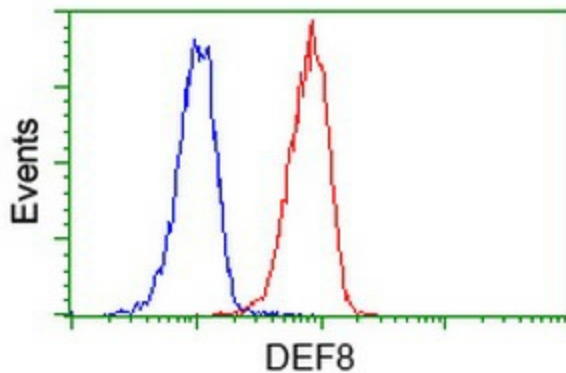
Immunohistochemical staining of paraffin-embedded Human lymphoma tissue using anti-DEF8 mouse monoclonal antibody. (Heat-induced epitope retrieval by 10mM citric buffer, pH6.0, 100°C for 10min, [TA502669])



Anti-DEF8 mouse monoclonal antibody ([TA502669]) immunofluorescent staining of COS7 cells transiently transfected by pCMV6-ENTRY DEF8 ([RC224669]).



Flow cytometric Analysis of HeLa cells, using anti-DEF8 antibody ([TA502669]), (Red), compared to a nonspecific negative control antibody (TA50011), (Blue).



Flow cytometric Analysis of Jurkat cells, using anti-DEF8 antibody ([TA502669]), (Red), compared to a nonspecific negative control antibody (TA50011), (Blue).