

## Product datasheet for **TA502669AM**

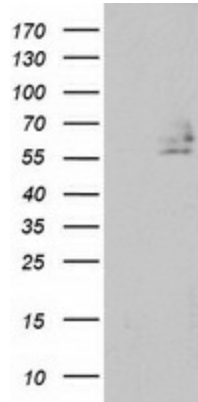
### DEF8 Mouse Monoclonal Antibody (Biotin conjugated) [Clone ID: OTI4B6]

#### Product data:

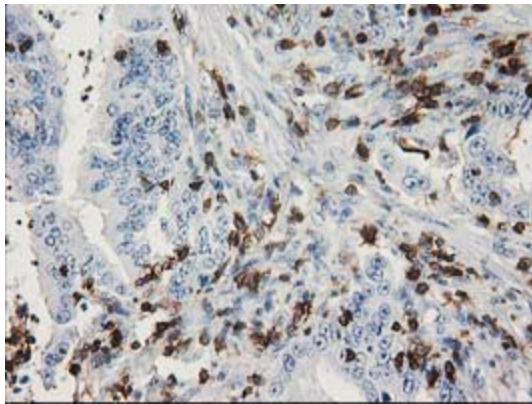
Product Type:	Primary Antibodies
Clone Name:	OTI4B6
Applications:	FC, IF, IHC, WB
Recommended Dilution:	WB 1:500, IHC 1:150, IF 1:100, FLOW 1:100
Reactivity:	Human, Mouse, Rat
Host:	Mouse
Isotype:	IgG2a
Clonality:	Monoclonal
Immunogen:	Full length human recombinant protein of human DEF8 (NP_997397) produced in HEK293T cell.
Formulation:	PBS (pH 7.3) containing 1% BSA, 50% glycerol and 0.02% sodium azide.
Concentration:	0.5 mg/ml
Purification:	Purified from mouse ascites fluids or tissue culture supernatant by affinity chromatography (protein A/G)
Conjugation:	Biotin
Storage:	Store at -20°C as received.
Stability:	Stable for 12 months from date of receipt.
Predicted Protein Size:	58.5 kDa
Gene Name:	differentially expressed in FDCP 8 homolog
Database Link:	<a href="#">NP_997397</a> <a href="#">Entrez Gene 23854 Mouse</a> <a href="#">Entrez Gene 307973 Rat</a> <a href="#">Entrez Gene 54849 Human</a> <a href="#">Q6ZN54</a>
Synonyms:	FLJ20186; MGC104349



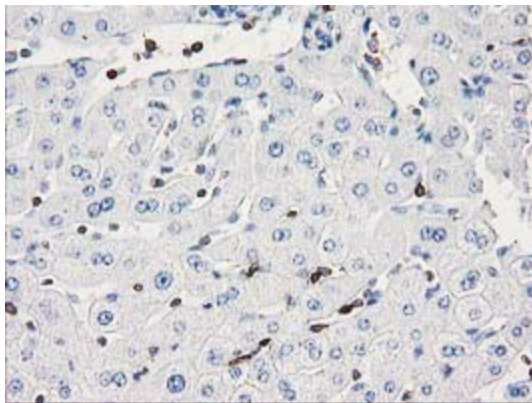
[View online »](#)

**Product images:**


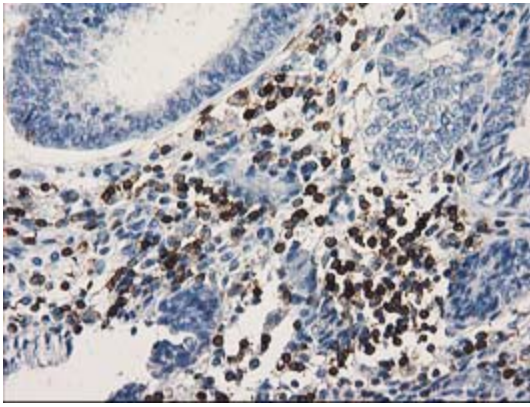
HEK293T cells were transfected with the pCMV6-ENTRY control (Cat# [PS100001], Left lane) or pCMV6-ENTRY DEF8 (Cat# [RC224669], Right lane) cDNA for 48 hrs and lysed. Equivalent amounts of cell lysates (5 ug per lane) were separated by SDS-PAGE and immunoblotted with anti-DEF8 (Cat# [TA502669]). Positive lysates [LY403723] (100ug) and [LC403723] (20ug) can be purchased separately from OriGene.



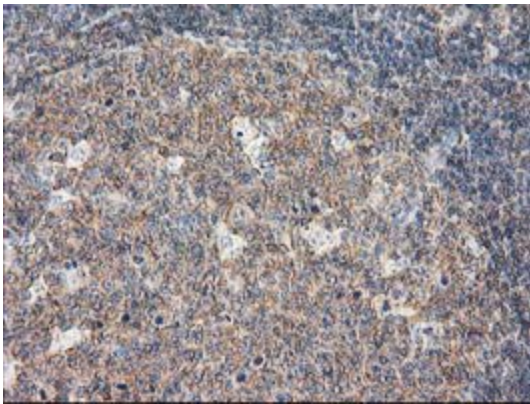
Immunohistochemical staining of paraffin-embedded Adenocarcinoma of Human colon tissue using anti-DEF8 mouse monoclonal antibody. (Heat-induced epitope retrieval by 10mM citric buffer, pH6.0, 100°C for 10min, [TA502669])



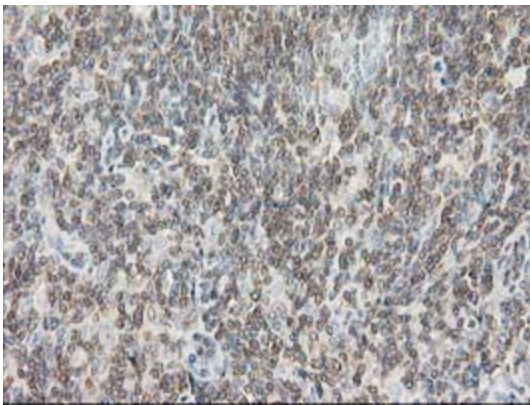
Immunohistochemical staining of paraffin-embedded Human liver tissue within the normal limits using anti-DEF8 mouse monoclonal antibody. (Heat-induced epitope retrieval by 10mM citric buffer, pH6.0, 100°C for 10min, [TA502669])



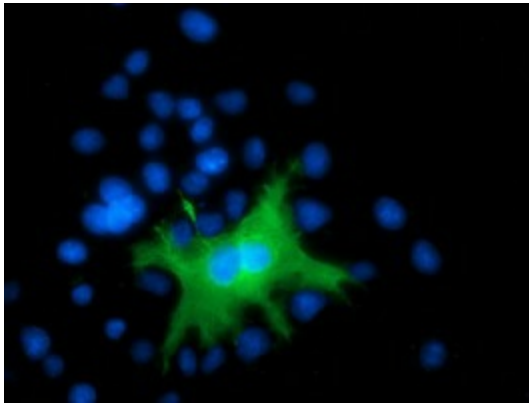
Immunohistochemical staining of paraffin-embedded Adenocarcinoma of Human endometrium tissue using anti-DEF8 mouse monoclonal antibody. (Heat-induced epitope retrieval by 10mM citric buffer, pH6.0, 100°C for 10min, [TA502669])



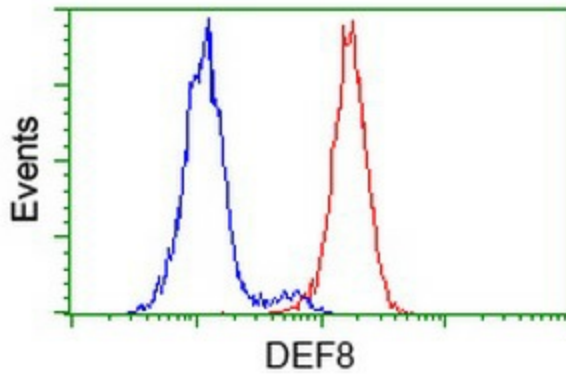
Immunohistochemical staining of paraffin-embedded Human lymph node tissue within the normal limits using anti-DEF8 mouse monoclonal antibody. (Heat-induced epitope retrieval by 10mM citric buffer, pH6.0, 100°C for 10min, [TA502669])



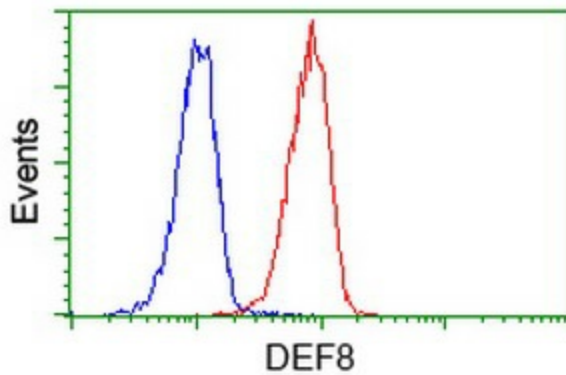
Immunohistochemical staining of paraffin-embedded Human lymphoma tissue using anti-DEF8 mouse monoclonal antibody. (Heat-induced epitope retrieval by 10mM citric buffer, pH6.0, 100°C for 10min, [TA502669])



Anti-DEF8 mouse monoclonal antibody ([TA502669]) immunofluorescent staining of COS7 cells transiently transfected by pCMV6-ENTRY DEF8 ([RC224669]).



Flow cytometric Analysis of HeLa cells, using anti-DEF8 antibody ([TA502669]), (Red), compared to a nonspecific negative control antibody (TA50011), (Blue).



Flow cytometric Analysis of Jurkat cells, using anti-DEF8 antibody ([TA502669]), (Red), compared to a nonspecific negative control antibody (TA50011), (Blue).