

## Product datasheet for **TA502645M**

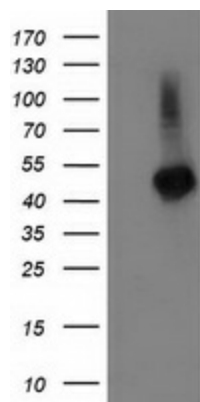
### TBCEL Mouse Monoclonal Antibody [Clone ID: OTI3H3]

#### Product data:

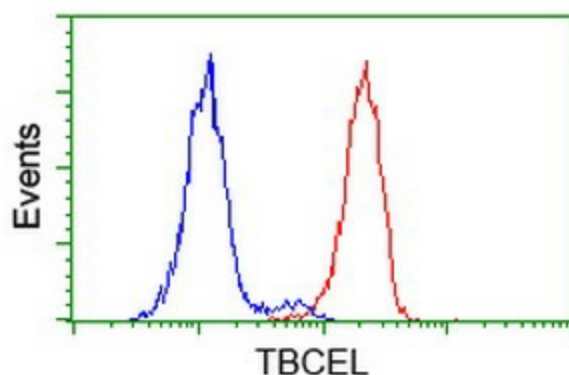
Product Type:	Primary Antibodies
Clone Name:	OTI3H3
Applications:	FC, WB
Recommended Dilution:	WB 1:500~2000, FLOW 1:100
Reactivity:	Human, Mouse, Rat
Host:	Mouse
Isotype:	IgG1
Clonality:	Monoclonal
Immunogen:	Full length human recombinant protein of human TBCEL (NP_689928) produced in HEK293T cell.
Formulation:	PBS (pH 7.3) containing 1% BSA, 50% glycerol and 0.02% sodium azide.
Concentration:	0.45 mg/ml
Purification:	Purified from mouse ascites fluids or tissue culture supernatant by affinity chromatography (protein A/G)
Conjugation:	Unconjugated
Storage:	Store at -20°C as received.
Stability:	Stable for 12 months from date of receipt.
Predicted Protein Size:	48 kDa
Gene Name:	tubulin folding cofactor E like
Database Link:	<a href="#">NP_689928</a> <a href="#">Entrez Gene 272589 Mouse</a> <a href="#">Entrez Gene 315591 Rat</a> <a href="#">Entrez Gene 219899 Human</a> <a href="#">Q5QJ74</a>
Synonyms:	El; LRRC35
Protein Families:	Druggable Genome


[View online »](#)

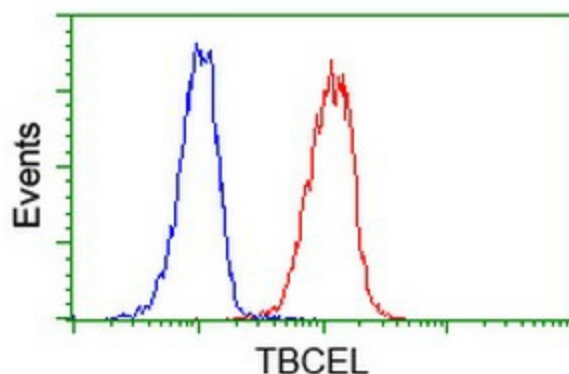
## Product images:



HEK293T cells were transfected with the pCMV6-ENTRY control (Left lane) or pCMV6-ENTRY TBCEL ([RC215292], Right lane) cDNA for 48 hrs and lysed. Equivalent amounts of cell lysates (5 ug per lane) were separated by SDS-PAGE and immunoblotted with anti-TBCEL. Positive lysates [LY407335] (100ug) and [LC407335] (20ug) can be purchased separately from OriGene.



Flow cytometric Analysis of HeLa cells, using anti-TBCEL antibody ([TA502645]), (Red), compared to a nonspecific negative control antibody (TA50011), (Blue).



Flow cytometric Analysis of Jurkat cells, using anti-TBCEL antibody ([TA502645]), (Red), compared to a nonspecific negative control antibody (TA50011), (Blue).