

Product datasheet for **TA502644S**

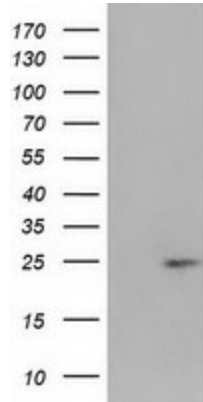
HDHD1A (PUDP) Mouse Monoclonal Antibody [Clone ID: OTI6G3]

Product data:

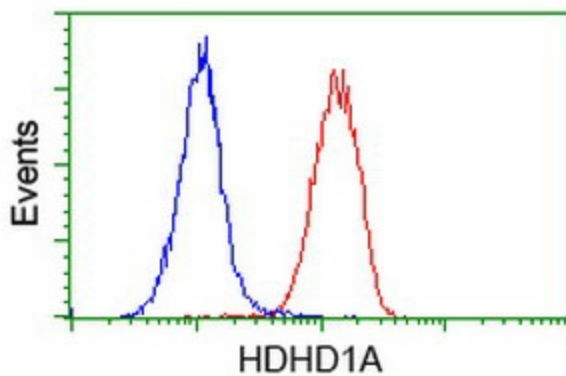
Product Type:	Primary Antibodies
Clone Name:	OTI6G3
Applications:	FC, WB
Recommended Dilution:	WB 1:500, FLOW 1:100
Reactivity:	Human
Host:	Mouse
Isotype:	IgG1
Clonality:	Monoclonal
Immunogen:	Full length human recombinant protein of human HDHD1A (NP_036212) produced in HEK293T cell.
Formulation:	PBS (pH 7.3) containing 1% BSA, 50% glycerol and 0.02% sodium azide.
Concentration:	0.57 mg/ml
Purification:	Purified from mouse ascites fluids or tissue culture supernatant by affinity chromatography (protein A/G)
Conjugation:	Unconjugated
Storage:	Store at -20°C as received.
Stability:	Stable for 12 months from date of receipt.
Predicted Protein Size:	23.5 kDa
Gene Name:	pseudouridine 5'-phosphatase
Database Link:	NP_036212 Entrez Gene 8226 Human Q08623
Background:	This gene encodes a member of the haloacid dehalogenase-like (HAD) hydrolase superfamily. The encoded protein has no known biological function. This gene has a pseudogene on chromosome 1. Multiple alternatively spliced transcript variants encoding different isoforms have been identified. [provided by RefSeq]
Synonyms:	DXF68S1E; FAM16AX; GS1; HDHD1A



[View online »](#)

Product images:

HEK293T cells were transfected with the pCMV6-ENTRY control (Left lane) or pCMV6-ENTRY HDHD1A ([RC204419], Right lane) cDNA for 48 hrs and lysed. Equivalent amounts of cell lysates (5 ug per lane) were separated by SDS-PAGE and immunoblotted with anti-HDHD1A. Positive lysates [LY415984] (100ug) and [LC415984] (20ug) can be purchased separately from OriGene.



Flow cytometric Analysis of HeLa cells, using anti-HDHD1A antibody ([TA502644]), (Red), compared to a nonspecific negative control antibody (TA50011), (Blue).