

Product datasheet for **TA502643**

Beclin 1 (BECN1) Mouse Monoclonal Antibody [Clone ID: OT11F1]

Product data:

Product Type:	Primary Antibodies
Clone Name:	OT11F1
Applications:	FC, IF, IHC, WB
Recommended Dilution:	WB 1:500~2000, IHC 1:150, IF 1:100, FLOW 1:100
Reactivity:	Human, Mouse, Rat, Dog
Host:	Mouse
Isotype:	IgG2a
Clonality:	Monoclonal
Immunogen:	Full length human recombinant protein of human BECN1 (NP_003757) produced in HEK293T cell.
Formulation:	PBS (PH 7.3) containing 1% BSA, 50% glycerol and 0.02% sodium azide.
Concentration:	0.35 mg/ml
Purification:	Purified from mouse ascites fluids or tissue culture supernatant by affinity chromatography (protein A/G)
Conjugation:	Unconjugated
Storage:	Store at -20°C as received.
Stability:	Stable for 12 months from date of receipt.
Predicted Protein Size:	51.7 kDa
Gene Name:	beclin 1
Database Link:	NP_003757 Entrez Gene 56208 Mouse Entrez Gene 114558 Rat Entrez Gene 480513 Dog Entrez Gene 8678 Human Q14457
Background:	Beclin-1 participates in the regulation of autophagy and has an important role in development, tumorigenesis, and neurodegeneration (Zhong et al., 2009 [PubMed 19270693]). [supplied by OMIM]
Synonyms:	ATG6; beclin1; VPS30

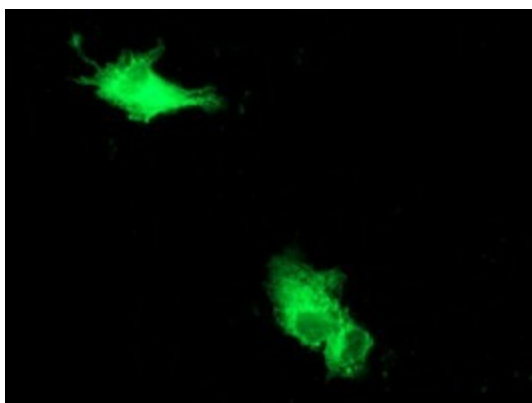


[View online »](#)

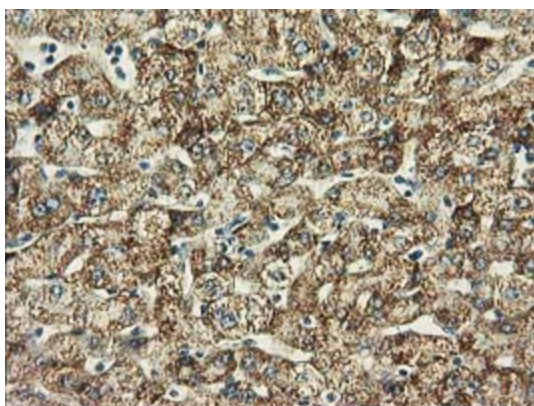
Protein Families: Druggable Genome

Protein Pathways: Regulation of autophagy

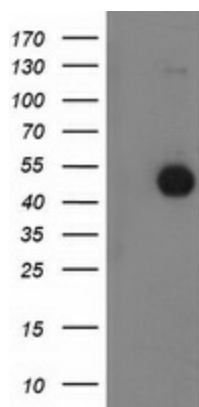
Product images:



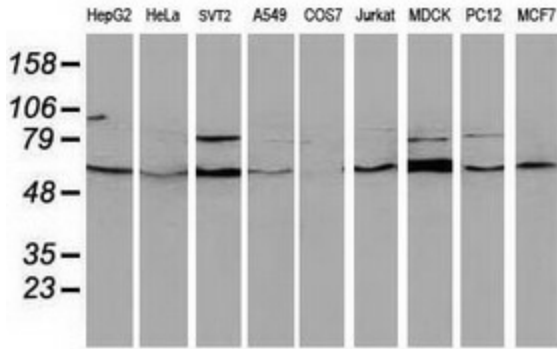
Anti-BECN1 mouse monoclonal antibody (TA502643) immunofluorescent staining of COS7 cells transiently transfected by pCMV6-ENTRY BECN1 ([RC201629]).



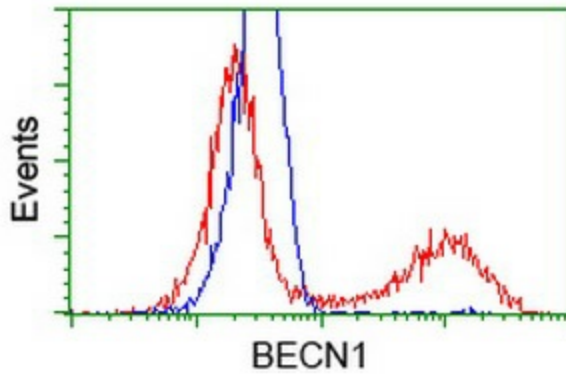
Immunohistochemical staining of paraffin-embedded Human liver tissue within the normal limits using anti-BECN1 mouse monoclonal antibody. (Heat-induced epitope retrieval by 10mM citric buffer, pH6.0, 100°C for 10min, TA502643)



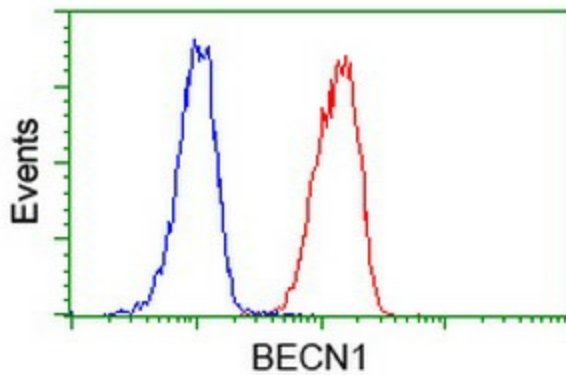
HEK293T cells were transfected with the pCMV6-ENTRY control (Cat# [PS100001], Left lane) or pCMV6-ENTRY BECN1 (Cat# [RC201629], Right lane) cDNA for 48 hrs and lysed. Equivalent amounts of cell lysates (5 ug per lane) were separated by SDS-PAGE and immunoblotted with anti-BECN1(Cat# TA502643). Positive lysates [LY401239] (100ug) and [LC401239] (20ug) can be purchased separately from OriGene.



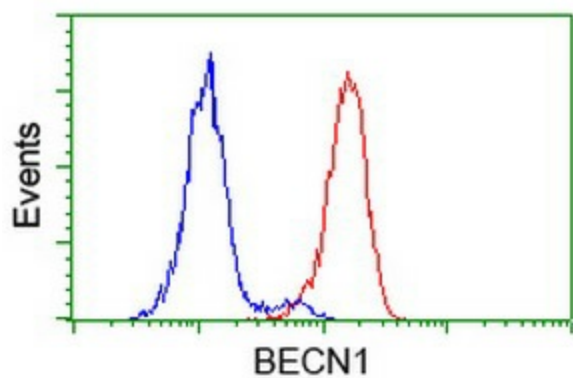
Western blot analysis of extracts (35ug) from 9 different cell lines by using anti-BECN1 monoclonal antibody.



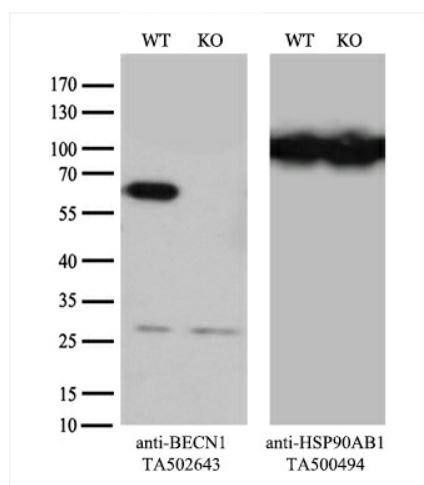
HEK293T cells transfected with either [RC201629] overexpress plasmid (Red) or empty vector control plasmid (Blue) were immunostained by anti-BECN1 antibody (TA502643), and then analyzed by flow cytometry.



Flow cytometric Analysis of Jurkat cells, using anti-BECN1 antibody (TA502643), (Red), compared to a nonspecific negative control antibody (TA50011), (Blue).



Flow cytometric Analysis of HeLa cells, using anti-BECN1 antibody (TA502643), (Red), compared to a nonspecific negative control antibody (TA50011), (Blue).



Equivalent amounts of cell lysates (10 ug per lane) of wild-type HeLa cells (WT, Cat# LC810HELA) and BECN1-Knockout HeLa cells (KO, Cat# [LC834634]) were separated by SDS-PAGE and immunoblotted with anti-BECN1 monoclonal antibody TA502643 (1:500). Then the blotted membrane was stripped and reprobed with anti-HSP90 antibody as a loading control.