

Product datasheet for **TA502635**

ARFGAP1 Mouse Monoclonal Antibody [Clone ID: OTI 2C10]

Product data:

Product Type:	Primary Antibodies
Clone Name:	OTI 2C10
Applications:	FC, IF, WB
Recommended Dilution:	WB 1:2000, IF 1:100, FLOW 1:100
Reactivity:	Human, Mouse, Rat
Host:	Mouse
Isotype:	IgG2b
Clonality:	Monoclonal
Immunogen:	Full length human recombinant protein of human ARFGAP1 (NP_783202) produced in HEK293T cell.
Formulation:	PBS (pH 7.3) containing 1% BSA, 50% glycerol and 0.02% sodium azide.
Concentration:	0.4 mg/ml
Purification:	Purified from mouse ascites fluids or tissue culture supernatant by affinity chromatography (protein A/G)
Conjugation:	Unconjugated
Storage:	Store at -20°C as received.
Stability:	Stable for 12 months from date of receipt.
Predicted Protein Size:	45.5 kDa
Gene Name:	ADP ribosylation factor GTPase activating protein 1
Database Link:	NP_783202 Entrez Gene 228998 Mouse Entrez Gene 246310 Rat Entrez Gene 55738 Human Q8N6T3



[View online »](#)

Background:

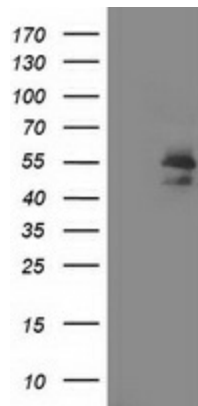
The protein encoded by this gene is a GTPase-activating protein (GAP) which associates with the Golgi apparatus and which interacts with ADP-ribosylation factor 1 (ARF1). The encoded protein promotes hydrolysis of ARF1-bound GTP and is required for the dissociation of coat proteins from Golgi-derived membranes and vesicles. Dissociation of the coat proteins is required for the fusion of these vesicles with target compartments. The activity of this protein is stimulated by phosphoinositides and inhibited by phosphatidylcholine. Two transcript variants encoding different isoforms have been found for this gene. [provided by RefSeq, Jul

Synonyms:

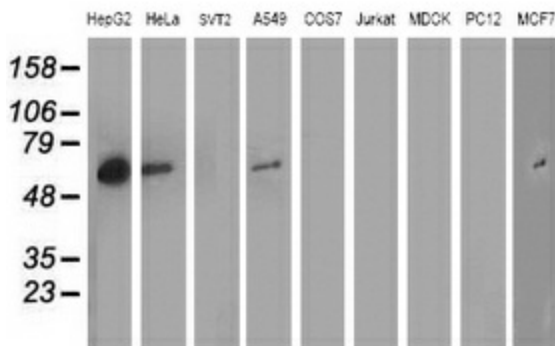
ARF1GAP; HRIHFB2281

Protein Pathways:

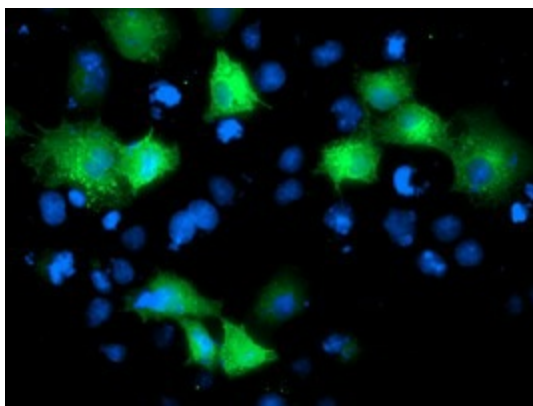
Endocytosis

Product images:


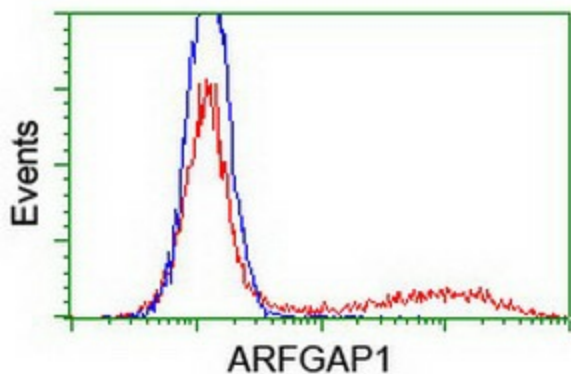
HEK293T cells were transfected with the pCMV6-ENTRY control (Left lane) or pCMV6-ENTRY ARFGAP1 ([RC206987], Right lane) cDNA for 48 hrs and lysed. Equivalent amounts of cell lysates (5 ug per lane) were separated by SDS-PAGE and immunoblotted with anti-ARFGAP1. Positive lysates [LY406240] (100ug) and [LC406240] (20ug) can be purchased separately from OriGene.



Western blot analysis of extracts (35ug) from 9 different cell lines by using anti-ARFGAP1 monoclonal antibody (HepG2: human; HeLa: human; SVT2: mouse; A549: human; COS7: monkey; Jurkat: human; MDCK: canine; PC12: rat; MCF7: human).



Anti-ARFGAP1 mouse monoclonal antibody (TA502635) immunofluorescent staining of COS7 cells transiently transfected by pCMV6-ENTRY ARFGAP1 ([RC206987]).



HEK293T cells transfected with either [RC206987] overexpress plasmid (Red) or empty vector control plasmid (Blue) were immunostained by anti-ARFGAP1 antibody (TA502635), and then analyzed by flow cytometry.