

## Product datasheet for **TA502630S**

### NECAB1 Mouse Monoclonal Antibody [Clone ID: OTI2H5]

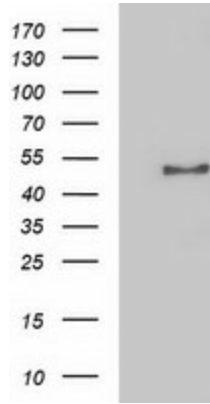
#### Product data:

Product Type:	Primary Antibodies
Clone Name:	OTI2H5
Applications:	FC, WB
Recommended Dilution:	WB 1:2000, FLOW 1:100
Reactivity:	Human, Mouse, Rat
Host:	Mouse
Isotype:	IgG1
Clonality:	Monoclonal
Immunogen:	Full length human recombinant protein of human NECAB1 (NP_071746) produced in HEK293T cell.
Formulation:	PBS (pH 7.3) containing 1% BSA, 50% glycerol and 0.02% sodium azide.
Concentration:	0.61 mg/ml
Purification:	Purified from mouse ascites fluids or tissue culture supernatant by affinity chromatography (protein A/G)
Conjugation:	Unconjugated
Storage:	Store at -20°C as received.
Stability:	Stable for 12 months from date of receipt.
Predicted Protein Size:	40.4 kDa
Gene Name:	N-terminal EF-hand calcium binding protein 1
Database Link:	<a href="#">NP_071746</a> <a href="#">Entrez Gene 64168 Human</a> <a href="#">Q8N987</a>
Synonyms:	EFCBP1; STIP-1

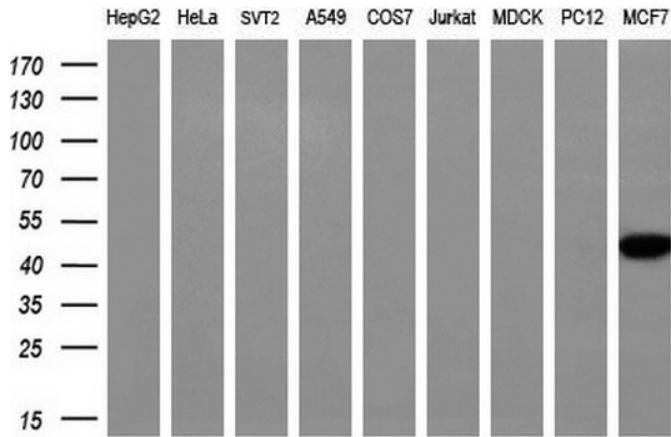


[View online »](#)

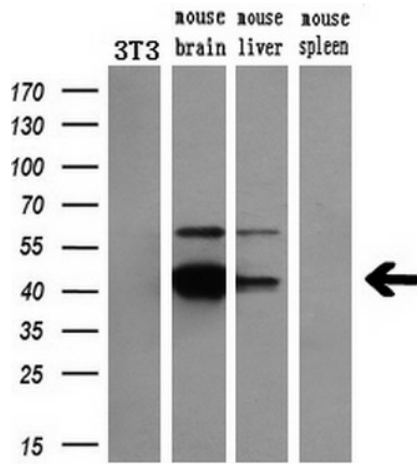
Product images:



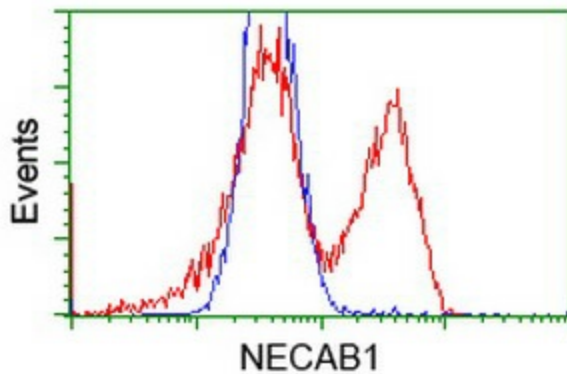
HEK293T cells were transfected with the pCMV6-ENTRY control (Cat# [PS100001], Left lane) or pCMV6-ENTRY NECAB1 (Cat# [RC209704], Right lane) cDNA for 48 hrs and lysed. Equivalent amounts of cell lysates (5 ug per lane) were separated by SDS-PAGE and immunoblotted with anti-NECAB1(Cat# [TA502630]). Positive lysates [LY411679] (100ug) and [LC411679] (20ug) can be purchased separately from OriGene.



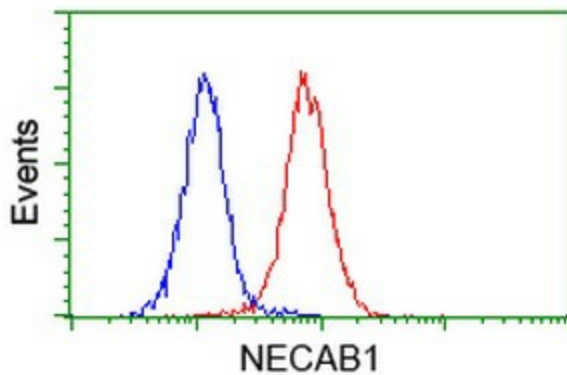
Western blot analysis of extracts (35ug) from 9 different cell lines by using anti-NECAB1 monoclonal antibody (HepG2: human; HeLa: human; SVT2: mouse; A549: human; COS7: monkey; Jurkat: human; MDCK: canine; PC12: rat; MCF7: human) (1:200).



Western blot analysis of extracts (10ug) from a mouse cell line and 3 different mouse tissues by using anti-NECAB1 monoclonal antibody (1:200).



HEK293T cells transfected with either [RC209704] overexpress plasmid (Red) or empty vector control plasmid (Blue) were immunostained by anti-NECAB1 antibody ([TA502630]), and then analyzed by flow cytometry.



Flow cytometric Analysis of Jurkat cells, using anti-NECAB1 antibody ([TA502630]), (Red), compared to a nonspecific negative control antibody (TA50011), (Blue).