

Product datasheet for **TA502621AM**

HDHD1A (PUDP) Mouse Monoclonal Antibody (Biotin conjugated) [Clone ID: OTI2E10]

Product data:

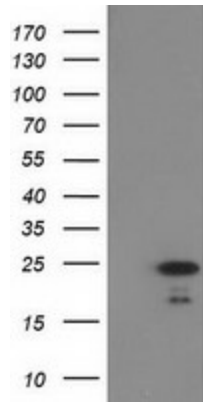
Product Type:	Primary Antibodies
Clone Name:	OTI2E10
Applications:	FC, IHC, WB
Recommended Dilution:	WB 1:1000~2000, IHC 1:150, FLOW 1:100
Reactivity:	Human, Dog, Rat, Monkey
Host:	Mouse
Isotype:	IgG1
Clonality:	Monoclonal
Immunogen:	Full length human recombinant protein of human HDHD1A (NP_036212) produced in HEK293T cell.
Formulation:	PBS (pH 7.3) containing 1% BSA, 50% glycerol and 0.02% sodium azide.
Concentration:	0.5 mg/ml
Purification:	Purified from mouse ascites fluids or tissue culture supernatant by affinity chromatography (protein A/G)
Conjugation:	Biotin
Storage:	Store at -20°C as received.
Stability:	Stable for 12 months from date of receipt.
Predicted Protein Size:	23.5 kDa
Gene Name:	pseudouridine 5'-phosphatase
Database Link:	NP_036212 Entrez Gene 291585 Rat Entrez Gene 610678 Dog Entrez Gene 707930 Monkey Entrez Gene 8226 Human Q08623
Background:	This gene encodes a member of the haloacid dehalogenase-like (HAD) hydrolase superfamily. The encoded protein has no known biological function. This gene has a pseudogene on chromosome 1. Multiple alternatively spliced transcript variants encoding different isoforms have been identified. [provided by RefSeq]



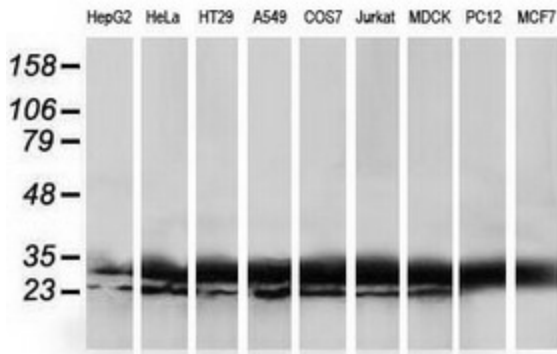
[View online »](#)

Synonyms: DXF68S1E; FAM16AX; GS1; HDHD1A

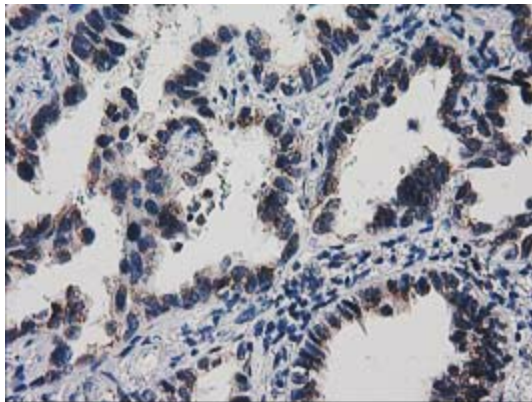
Product images:



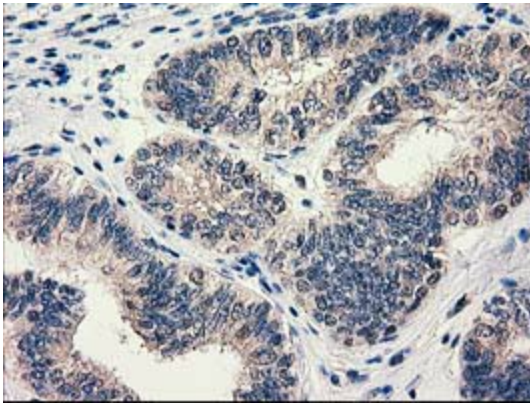
HEK293T cells were transfected with the pCMV6-ENTRY control (Cat# [PS100001], Left lane) or pCMV6-ENTRY HDHD1A (Cat# [RC229126], Right lane) cDNA for 48 hrs and lysed. Equivalent amounts of cell lysates (5 ug per lane) were separated by SDS-PAGE and immunoblotted with anti-HDHD1A(Cat# [TA502621]). Positive lysates [LY415984] (100ug) and [LC415984] (20ug) can be purchased separately from OriGene.



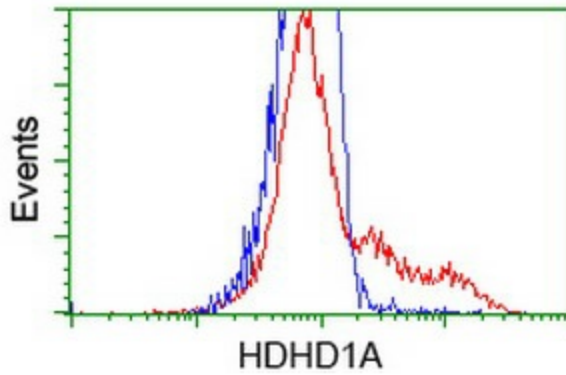
Western blot analysis of extracts (35ug) from 9 different cell lines by using anti-HDHD1A monoclonal antibody.



Immunohistochemical staining of paraffin-embedded Carcinoma of Human thyroid tissue using anti-HDHD1A mouse monoclonal antibody. (Heat-induced epitope retrieval by 10mM citric buffer, pH6.0, 100°C for 10min, [TA502621])



Immunohistochemical staining of paraffin-embedded Adenocarcinoma of Human endometrium tissue using anti-HDHD1A mouse monoclonal antibody. (Heat-induced epitope retrieval by 10mM citric buffer, pH6.0, 100°C for 10min, [TA502621])



HEK293T cells transfected with either [RC204419] overexpress plasmid (Red) or empty vector control plasmid (Blue) were immunostained by anti-HDHD1A antibody ([TA502621]), and then analyzed by flow cytometry.