

Product datasheet for **TA502615S**

Beclin 1 (BECN1) Mouse Monoclonal Antibody [Clone ID: OTI2C5]

Product data:

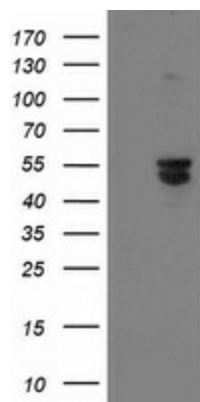
Product Type:	Primary Antibodies
Clone Name:	OTI2C5
Applications:	FC, IF, WB
Recommended Dilution:	WB 1:2000, IF 1:100, FLOW 1:100
Reactivity:	Human, Mouse, Rat
Host:	Mouse
Isotype:	IgG2a
Clonality:	Monoclonal
Immunogen:	Full length human recombinant protein of human BECN1 (NP_003757) produced in HEK293T cell.
Formulation:	PBS (pH 7.3) containing 1% BSA, 50% glycerol and 0.02% sodium azide.
Concentration:	1 mg/ml
Purification:	Purified from mouse ascites fluids or tissue culture supernatant by affinity chromatography (protein A/G)
Conjugation:	Unconjugated
Storage:	Store at -20°C as received.
Stability:	Stable for 12 months from date of receipt.
Predicted Protein Size:	51.7 kDa
Gene Name:	beclin 1
Database Link:	NP_003757 Entrez Gene 56208 Mouse Entrez Gene 114558 Rat Entrez Gene 8678 Human Q14457
Background:	Beclin-1 participates in the regulation of autophagy and has an important role in development, tumorigenesis, and neurodegeneration (Zhong et al., 2009 [PubMed 19270693]). [supplied by OMIM]
Synonyms:	ATG6; beclin1; VPS30
Protein Families:	Druggable Genome



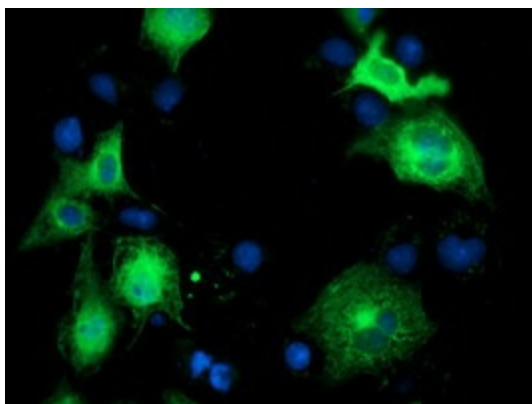
[View online »](#)

Protein Pathways: Regulation of autophagy

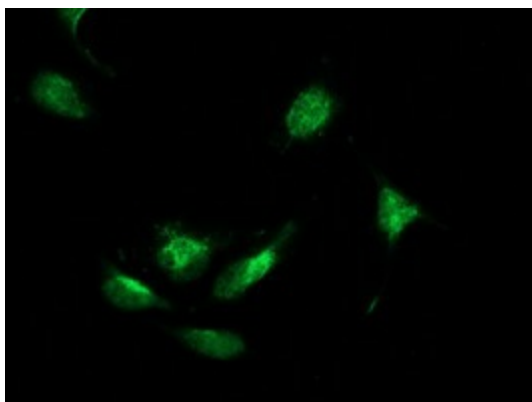
Product images:



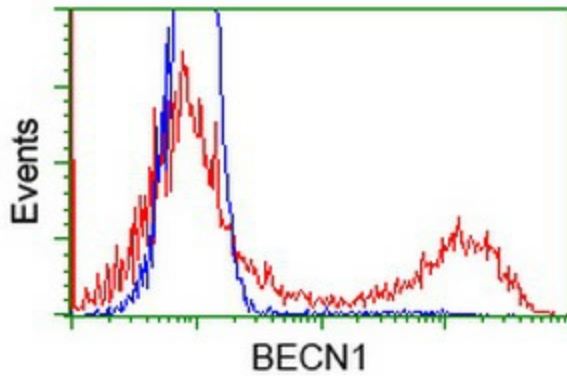
HEK293T cells were transfected with the pCMV6-ENTRY control (Left lane) or pCMV6-ENTRY BECN1 ([RC201629], Right lane) cDNA for 48 hrs and lysed. Equivalent amounts of cell lysates (5 ug per lane) were separated by SDS-PAGE and immunoblotted with anti-BECN1. Positive lysates [LY401239] (100ug) and [LC401239] (20ug) can be purchased separately from OriGene.



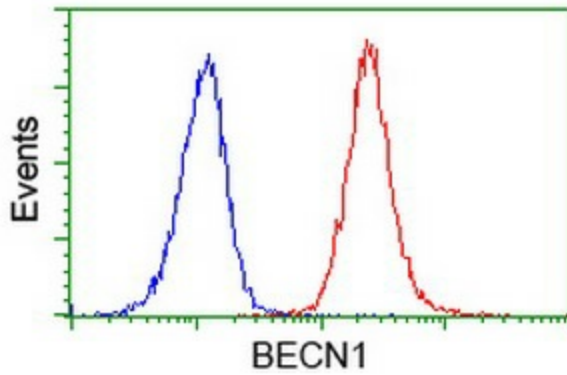
Anti-BECN1 mouse monoclonal antibody ([TA502615]) immunofluorescent staining of COS7 cells transiently transfected by pCMV6-ENTRY BECN1 ([RC201629]).



Immunofluorescent staining of HeLa cells using anti-BECN1 mouse monoclonal antibody ([TA502615]).



HEK293T cells transfected with either [RC201629] overexpress plasmid (Red) or empty vector control plasmid (Blue) were immunostained by anti-BECN1 antibody ([TA502615]), and then analyzed by flow cytometry.



Flow cytometric Analysis of Jurkat cells, using anti-BECN1 antibody ([TA502615]), (Red), compared to a nonspecific negative control antibody, (Blue).