

## Product datasheet for **TA502615AM**

### Beclin 1 (BECN1) Mouse Monoclonal Antibody (Biotin conjugated) [Clone ID: OTI2C5]

#### Product data:

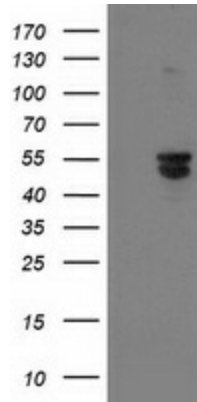
|                         |  |
|-------------------------|--|
| Product Type:           | Primary Antibodies   |
| Clone Name:             | OTI2C5   |
| Applications:           | FC, IF, WB   |
| Recommended Dilution:   | WB 1:2000, IF 1:100, FLOW 1:100  |
| Reactivity:             | Human, Mouse, Rat  |
| Host:                   | Mouse  |
| Isotype:                | IgG2a  |
| Clonality:              | Monoclonal   |
| Immunogen:              | Full length human recombinant protein of human BECN1 (NP_003757) produced in HEK293T cell.   |
| Formulation:            | PBS (pH 7.3) containing 1% BSA, 50% glycerol and 0.02% sodium azide.   |
| Concentration:          | 0.5 mg/ml  |
| Purification:           | Purified from mouse ascites fluids or tissue culture supernatant by affinity chromatography (protein A/G)  |
| Conjugation:            | Biotin   |
| Storage:                | Store at -20°C as received.  |
| Stability:              | Stable for 12 months from date of receipt.   |
| Predicted Protein Size: | 51.7 kDa   |
| Gene Name:              | beclin 1   |
| Database Link:          | <a href="#">NP_003757</a><br><a href="#">Entrez Gene 56208 Mouse</a> <a href="#">Entrez Gene 114558 Rat</a> <a href="#">Entrez Gene 8678 Human</a><br><a href="#">Q14457</a>                   |
| Background:             | Beclin-1 participates in the regulation of autophagy and has an important role in development, tumorigenesis, and neurodegeneration (Zhong et al., 2009 [PubMed 19270693]). [supplied by OMIM] |
| Synonyms:               | ATG6; beclin1; VPS30   |
| Protein Families:       | Druggable Genome   |



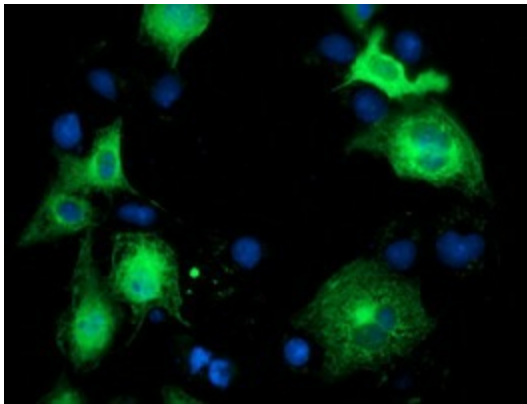
[View online »](#)

Protein Pathways: Regulation of autophagy

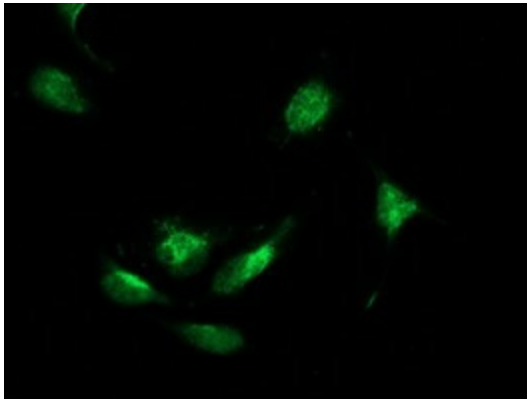
**Product images:**



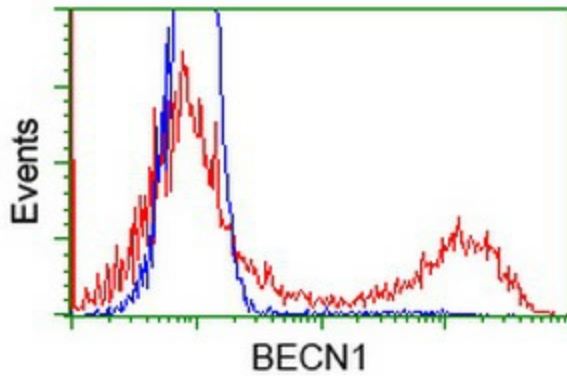
HEK293T cells were transfected with the pCMV6-ENTRY control (Left lane) or pCMV6-ENTRY BECN1 ([RC201629], Right lane) cDNA for 48 hrs and lysed. Equivalent amounts of cell lysates (5 ug per lane) were separated by SDS-PAGE and immunoblotted with anti-BECN1. Positive lysates [LY401239] (100ug) and [LC401239] (20ug) can be purchased separately from OriGene.



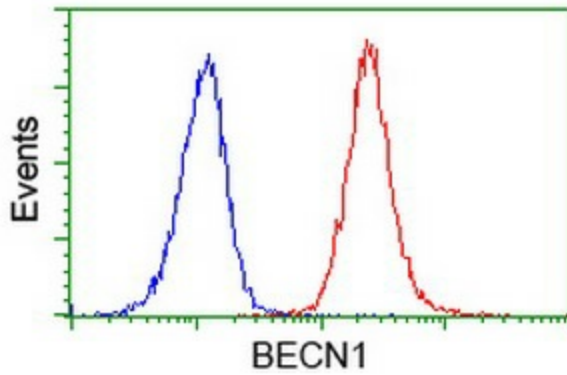
Anti-BECN1 mouse monoclonal antibody ([TA502615]) immunofluorescent staining of COS7 cells transiently transfected by pCMV6-ENTRY BECN1 ([RC201629]).



Immunofluorescent staining of HeLa cells using anti-BECN1 mouse monoclonal antibody ([TA502615]).



HEK293T cells transfected with either [RC201629] overexpress plasmid (Red) or empty vector control plasmid (Blue) were immunostained by anti-BECN1 antibody ([TA502615]), and then analyzed by flow cytometry.



Flow cytometric Analysis of Jurkat cells, using anti-BECN1 antibody ([TA502615]), (Red), compared to a nonspecific negative control antibody, (Blue).