

Product datasheet for TA502612M

PON1 Mouse Monoclonal Antibody [Clone ID: OTI2A9]

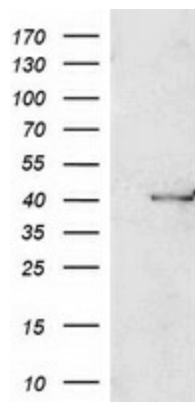
Product data:

| | |
|-------------------------|---|
| Product Type: | Primary Antibodies |
| Clone Name: | OTI2A9 |
| Applications: | FC, WB |
| Recommended Dilution: | WB 1:500~2000, FLOW 1:100 |
| Reactivity: | Human, Monkey |
| Host: | Mouse |
| Isotype: | IgG1 |
| Clonality: | Monoclonal |
| Immunogen: | Full length human recombinant protein of human PON1 (NP_000437) produced in HEK293T cell. |
| Formulation: | PBS (pH 7.3) containing 1% BSA, 50% glycerol and 0.02% sodium azide. |
| Concentration: | 0.34 mg/ml |
| Purification: | Purified from mouse ascites fluids or tissue culture supernatant by affinity chromatography (protein A/G) |
| Conjugation: | Unconjugated |
| Storage: | Store at -20°C as received. |
| Stability: | Stable for 12 months from date of receipt. |
| Predicted Protein Size: | 39.6 kDa |
| Gene Name: | paraoxonase 1 |
| Database Link: | NP_000437 Entrez Gene 699355 Monkey Entrez Gene 5444 Human P27169 |
| Background: | The enzyme encoded by this gene is an arylesterase that mainly hydrolyzes paroxon to produce p-nitrophenol. Paroxon is an organophosphorus anticholinesterase compound that is produced in vivo by oxidation of the insecticide parathion. Polymorphisms in this gene are a risk factor in coronary artery disease. The gene is found in a cluster of three related paraoxonase genes at 7q21.3. [provided by RefSeq] |

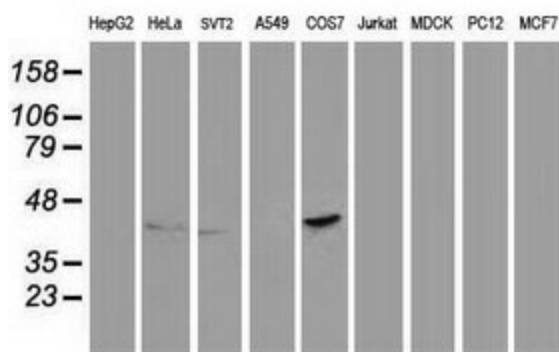

[View online »](#)

Synonyms: ESA; MVCD5; PON
Protein Families: Druggable Genome, Secreted Protein
Protein Pathways: Metabolic pathways

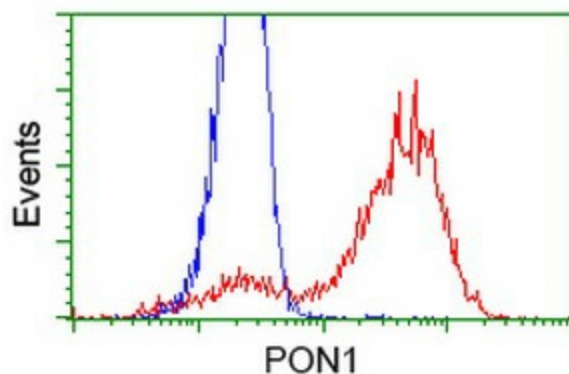
Product images:



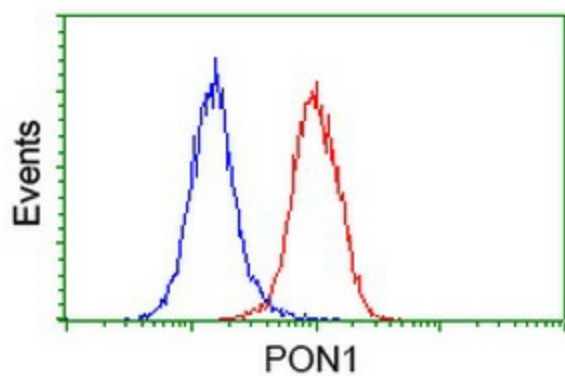
HEK293T cells were transfected with the pCMV6-ENTRY control (Left lane) or pCMV6-ENTRY PON1 [RC210356], Right lane) cDNA for 48 hrs and lysed. Equivalent amounts of cell lysates (5 ug per lane) were separated by SDS-PAGE and immunoblotted with anti-PON1. Positive lysates [LY400156] (100ug) and [LC400156] (20ug) can be purchased separately from OriGene.



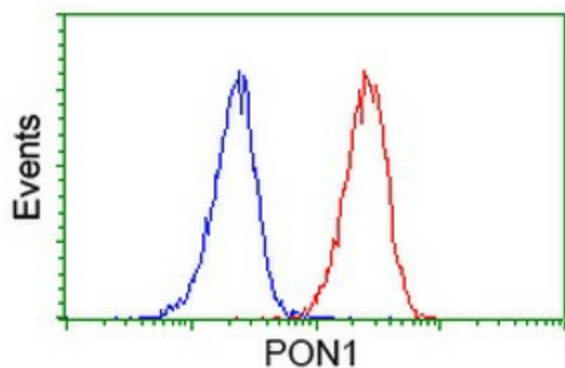
Western blot analysis of extracts (35ug) from 9 different cell lines by using anti-PON1 monoclonal antibody.



HEK293T cells transfected with either [RC210356] overexpress plasmid (Red) or empty vector control plasmid (Blue) were immunostained by anti-PON1 antibody ([TA502612]), and then analyzed by flow cytometry.



Flow cytometric Analysis of Hela cells, using anti-PON1 antibody ([TA502612]), (Red), compared to a nonspecific negative control antibody (TA50011), (Blue).



Flow cytometric Analysis of Jurkat cells, using anti-PON1 antibody ([TA502612]), (Red), compared to a nonspecific negative control antibody (TA50011), (Blue).