

Product datasheet for **TA502611BM**

PON1 Mouse Monoclonal Antibody (HRP conjugated) [Clone ID: OTI1F7]

Product data:

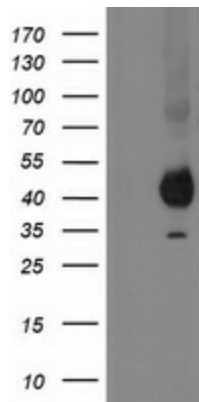
Product Type:	Primary Antibodies
Clone Name:	OTI1F7
Applications:	ELISA, FC, IHC, WB
Recommended Dilution:	WB 1:2000, IHC 1:150, FLOW 1:100
Reactivity:	Human
Host:	Mouse
Isotype:	IgG2b
Clonality:	Monoclonal
Immunogen:	Full length human recombinant protein of human PON1 (NP_000437) produced in HEK293T cell.
Formulation:	PBS (pH 7.3) containing 1% BSA, 50% glycerol.
Concentration:	0.5 mg/ml
Purification:	Purified from mouse ascites fluids or tissue culture supernatant by affinity chromatography (protein A/G)
Conjugation:	HRP
Storage:	Store at -20°C as received.
Stability:	Stable for 12 months from date of receipt.
Predicted Protein Size:	39.6 kDa
Gene Name:	paraoxonase 1
Database Link:	NP_000437 Entrez Gene 5444 Human P27169
Background:	The enzyme encoded by this gene is an arylesterase that mainly hydrolyzes paroxon to produce p-nitrophenol. Paroxon is an organophosphorus anticholinesterase compound that is produced in vivo by oxidation of the insecticide parathion. Polymorphisms in this gene are a risk factor in coronary artery disease. The gene is found in a cluster of three related paraoxonase genes at 7q21.3. [provided by RefSeq]



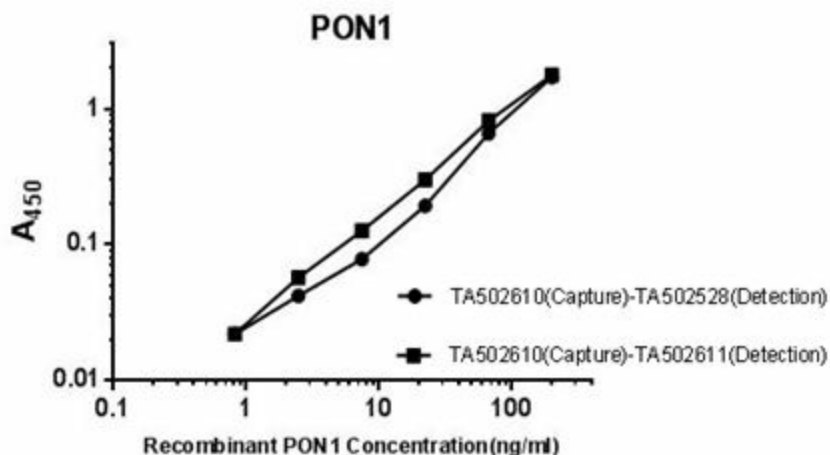
[View online »](#)

Synonyms: ESA; MVCD5; PON
Protein Families: Druggable Genome, Secreted Protein
Protein Pathways: Metabolic pathways

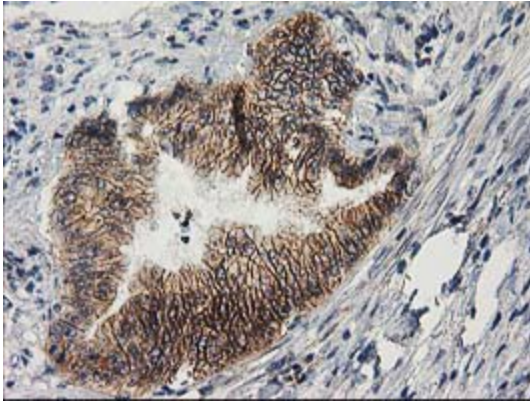
Product images:



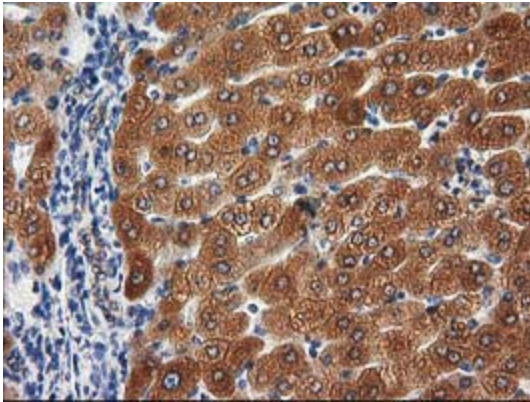
HEK293T cells were transfected with the pCMV6-ENTRY control (Cat# [PS100001], Left lane) or pCMV6-ENTRY PON1 (Cat# [RC210356], Right lane) cDNA for 48 hrs and lysed. Equivalent amounts of cell lysates (5 ug per lane) were separated by SDS-PAGE and immunoblotted with anti-PON1(Cat# [TA502611]). Positive lysates [LY400156] (100ug) and [LC400156] (20ug) can be purchased separately from OriGene.



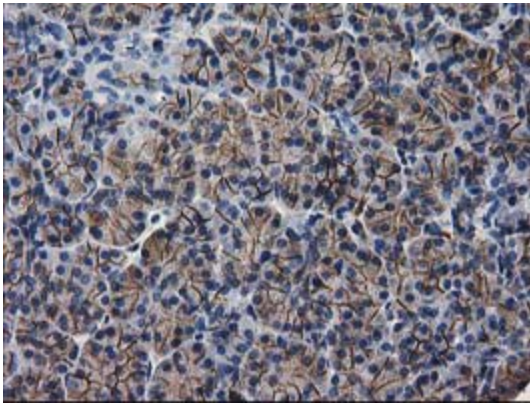
Standard curve for ELISA analysis with PON1 recombinant protein (dilution range from 0.8ng/ml to 200ng/ml) using PON1 Capture Antibody (Cat# [TA502610]) at 5ug/ml and HRP conjugated PON1 Detection mAb (Cat# [TA502528]/[TA502611]) at 0.16ug/ml.



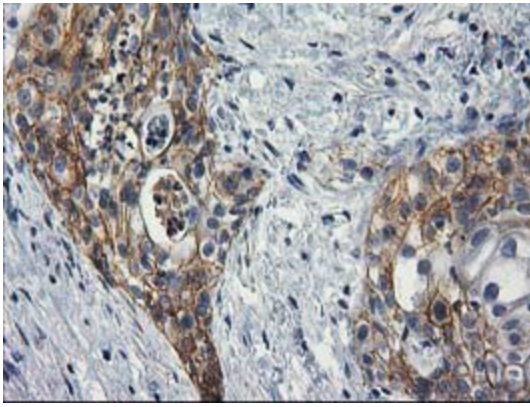
Immunohistochemical staining of paraffin-embedded Adenocarcinoma of Human colon tissue using anti-PON1 mouse monoclonal antibody. (Heat-induced epitope retrieval by 10mM citric buffer, pH6.0, 100°C for 10min, [TA502611])



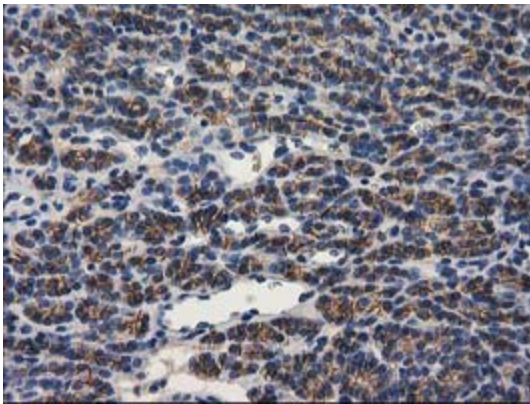
Immunohistochemical staining of paraffin-embedded Human liver tissue within the normal limits using anti-PON1 mouse monoclonal antibody. (Heat-induced epitope retrieval by 10mM citric buffer, pH6.0, 100°C for 10min, [TA502611])



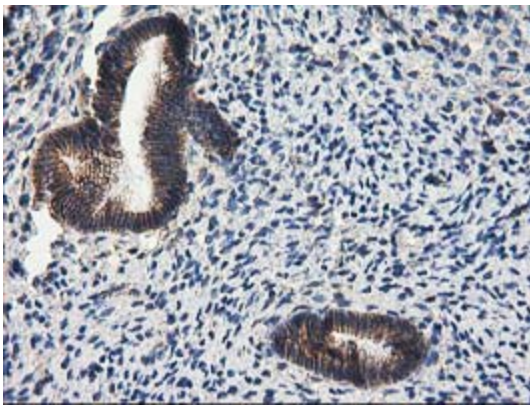
Immunohistochemical staining of paraffin-embedded Human pancreas tissue within the normal limits using anti-PON1 mouse monoclonal antibody. (Heat-induced epitope retrieval by 10mM citric buffer, pH6.0, 100°C for 10min, [TA502611])



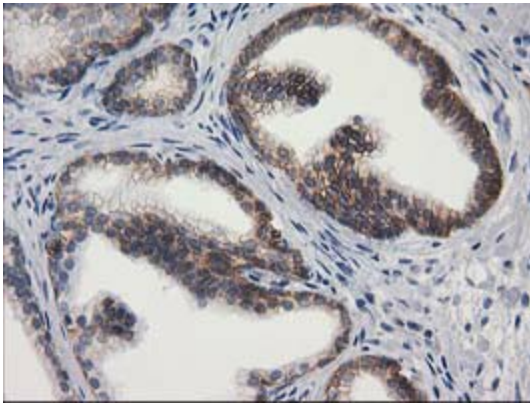
Immunohistochemical staining of paraffin-embedded Carcinoma of Human pancreas tissue using anti-PON1 mouse monoclonal antibody. (Heat-induced epitope retrieval by 10mM citric buffer, pH6.0, 100°C for 10min, [TA502611])



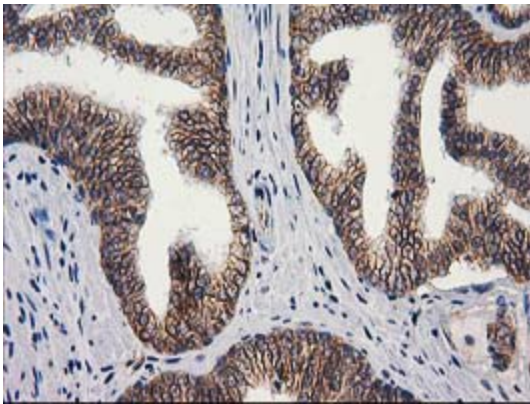
Immunohistochemical staining of paraffin-embedded Carcinoma of Human thyroid tissue using anti-PON1 mouse monoclonal antibody. (Heat-induced epitope retrieval by 10mM citric buffer, pH6.0, 100°C for 10min, [TA502611])



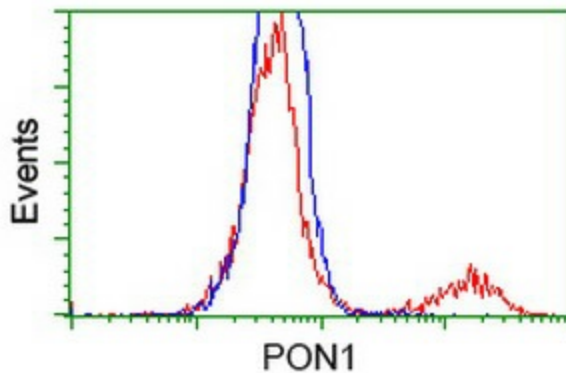
Immunohistochemical staining of paraffin-embedded Human endometrium tissue within the normal limits using anti-PON1 mouse monoclonal antibody. (Heat-induced epitope retrieval by 10mM citric buffer, pH6.0, 100°C for 10min, [TA502611])



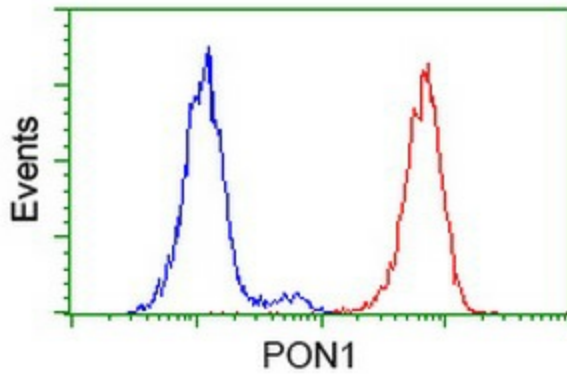
Immunohistochemical staining of paraffin-embedded Human prostate tissue within the normal limits using anti-PON1 mouse monoclonal antibody. (Heat-induced epitope retrieval by 10mM citric buffer, pH6.0, 100°C for 10min, [TA502611])



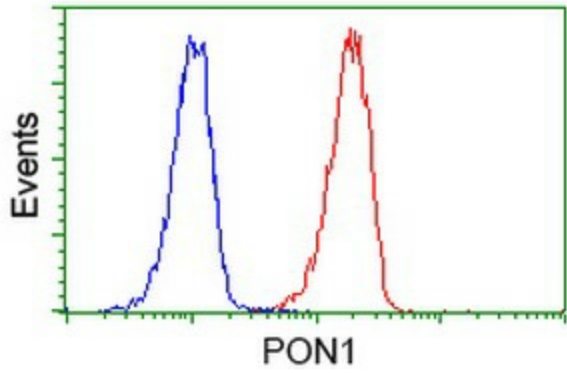
Immunohistochemical staining of paraffin-embedded Carcinoma of Human prostate tissue using anti-PON1 mouse monoclonal antibody. (Heat-induced epitope retrieval by 10mM citric buffer, pH6.0, 100°C for 10min, [TA502611])



HEK293T cells transfected with either [RC210356] overexpress plasmid (Red) or empty vector control plasmid (Blue) were immunostained by anti-PON1 antibody ([TA502611]), and then analyzed by flow cytometry.



Flow cytometric Analysis of HeLa cells, using anti-PON1 antibody ([TA502611]), (Red), compared to a nonspecific negative control antibody (TA50011), (Blue).



Flow cytometric Analysis of Jurkat cells, using anti-PON1 antibody ([TA502611]), (Red), compared to a nonspecific negative control antibody (TA50011), (Blue).