

Product datasheet for **TA502603M**

GBA3 Mouse Monoclonal Antibody [Clone ID: OTI4C7]

Product data:

Product Type:	Primary Antibodies
Clone Name:	OTI4C7
Applications:	FC, WB
Recommended Dilution:	WB 1:2000, FLOW 1:100
Reactivity:	Human
Host:	Mouse
Isotype:	IgG1
Clonality:	Monoclonal
Immunogen:	Human recombinant protein fragment corresponding to amino acids 1-150 and 370-469 of human GBA3 (NP_066024) produced in E.coli.
Formulation:	PBS (pH 7.3) containing 1% BSA, 50% glycerol and 0.02% sodium azide.
Concentration:	0.75 mg/ml
Purification:	Purified from mouse ascites fluids or tissue culture supernatant by affinity chromatography (protein A/G)
Conjugation:	Unconjugated
Storage:	Store at -20°C as received.
Stability:	Stable for 12 months from date of receipt.
Predicted Protein Size:	53.5 kDa
Gene Name:	glucosylceramidase beta 3 (gene/pseudogene)
Database Link:	NP_066024 Entrez Gene 57733 Human Q9H227



[View online »](#)

Background:

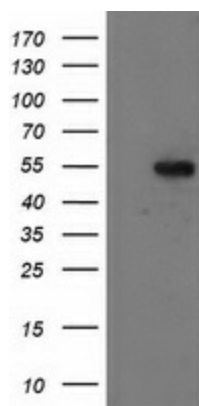
GBA3, or cytosolic beta-glucosidase (EC 3.2.1.21), is a predominantly liver enzyme that efficiently hydrolyzes beta-D-glucoside and beta-D-galactoside, but not any known physiologic beta-glycoside, suggesting that it may be involved in detoxification of plant glycosides (de Graaf et al., 2001 [PubMed 11389701]). GBA3 also has significant neutral glycosylceramidase activity (EC 3.2.1.62), suggesting that it may be involved in a nonlysosomal catabolic pathway of glucosylceramide metabolism (Hayashi et al., 2007 [PubMed 17595169]). [supplied by OMIM]

Synonyms:

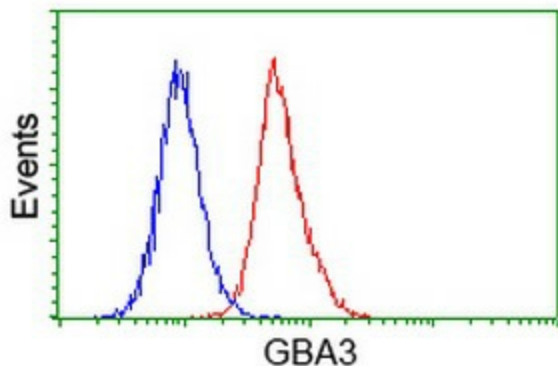
CBG; CBGL1; GLUC; KLRP

Protein Pathways:

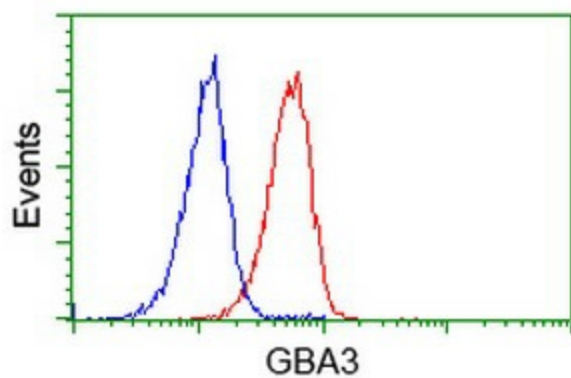
Cyanoamino acid metabolism, Starch and sucrose metabolism

Product images:


HEK293T cells were transfected with the pCMV6-ENTRY control (Left lane) or pCMV6-ENTRY GBA3 ([RC211035], Right lane) cDNA for 48 hrs and lysed. Equivalent amounts of cell lysates (5 ug per lane) were separated by SDS-PAGE and immunoblotted with anti-GBA3. Positive lysates [LY402815] (100ug) and [LC402815] (20ug) can be purchased separately from OriGene.



Flow cytometric Analysis of HeLa cells, using anti-GBA3 antibody ([TA502603]), (Red), compared to a nonspecific negative control antibody (TA50011), (Blue).



Flow cytometric Analysis of Jurkat cells, using anti-GBA3 antibody ([TA502603]), (Red), compared to a nonspecific negative control antibody (TA50011), (Blue).