

## Product datasheet for **TA502586**

### LACTB2 Mouse Monoclonal Antibody [Clone ID: OTI2F9]

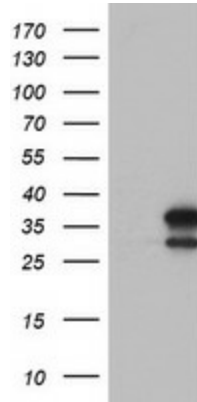
#### Product data:

Product Type:	Primary Antibodies
Clone Name:	OTI2F9
Applications:	FC, IHC, WB
Recommended Dilution:	WB 1:500~2000, IHC 1:150, FLOW 1:100
Reactivity:	Human, Dog, Monkey
Host:	Mouse
Isotype:	IgG1
Clonality:	Monoclonal
Immunogen:	Human recombinant protein fragment corresponding to amino acids 78-288 of human LACTB2(NP_057111) produced in HEK293T cell.
Formulation:	PBS (pH 7.3) containing 1% BSA, 50% glycerol and 0.02% sodium azide.
Concentration:	1 mg/ml
Purification:	Purified from mouse ascites fluids or tissue culture supernatant by affinity chromatography (protein A/G)
Conjugation:	Unconjugated
Storage:	Store at -20°C as received.
Stability:	Stable for 12 months from date of receipt.
Predicted Protein Size:	32.6 kDa
Gene Name:	lactamase beta 2
Database Link:	<a href="#">NP_057111</a> <a href="#">Entrez Gene 486990 Dog</a> <a href="#">Entrez Gene 695035 Monkey</a> <a href="#">Entrez Gene 51110 Human</a> <a href="#">Q53H82</a>
Synonyms:	CGI-83

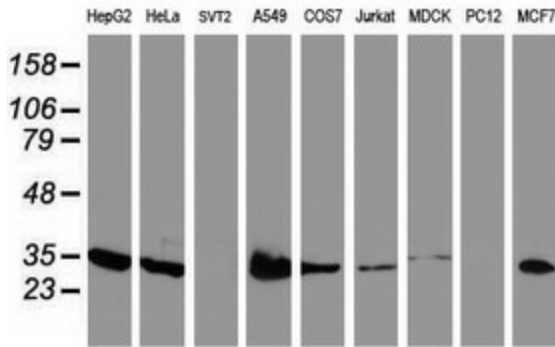


[View online »](#)

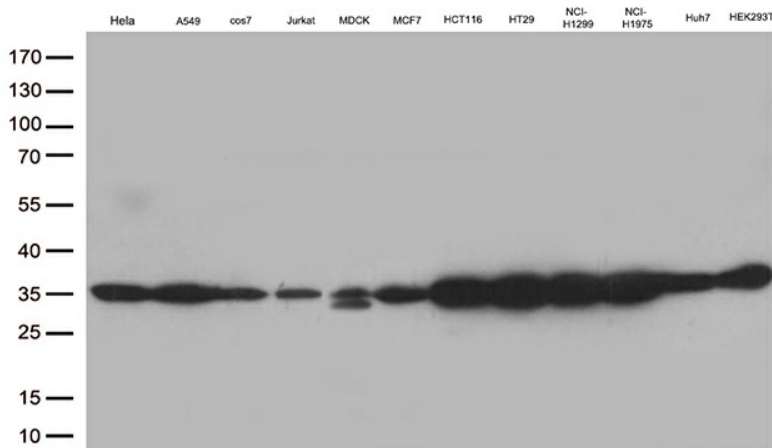
**Product images:**



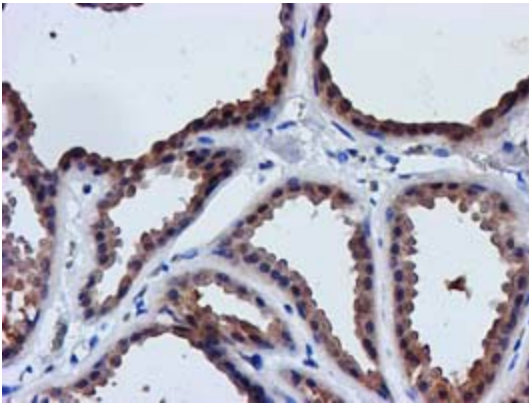
HEK293T cells were transfected with the pCMV6-ENTRY control (Cat# [PS100001], Left lane) or pCMV6-ENTRY LACTB2 (Cat# [RC201465], Right lane) cDNA for 48 hrs and lysed. Equivalent amounts of cell lysates (5 ug per lane) were separated by SDS-PAGE and immunoblotted with anti-LACTB2(Cat# TA502586). Positive lysates [LY414237] (100ug) and [LC414237] (20ug) can be purchased separately from OriGene.



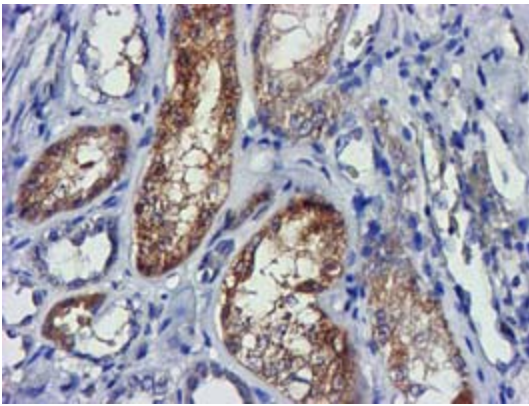
Western blot analysis of extracts (35ug) from 9 different cell lines by using anti-LACTB2 monoclonal antibody.



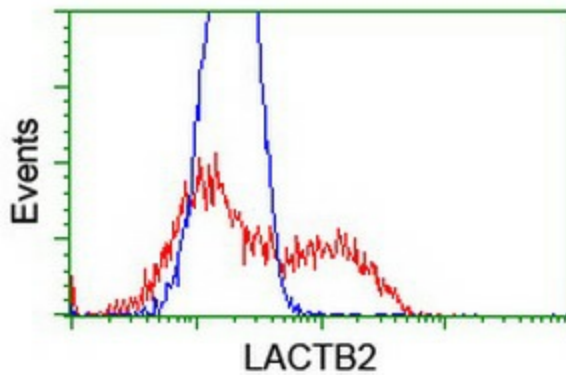
Western blot analysis of extracts (35ug) from 12 cell line lysates by using anti-LACTB2 monoclonal antibody (1:500).



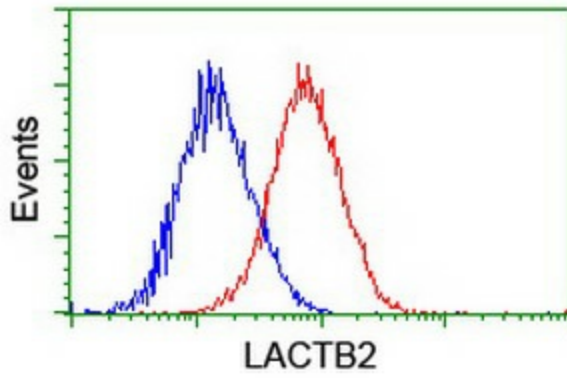
Immunohistochemical staining of paraffin-embedded Human breast tissue within the normal limits using anti-LACTB2 mouse monoclonal antibody. (Heat-induced epitope retrieval by 10mM citric buffer, pH6.0, 100°C for 10min, TA502586)



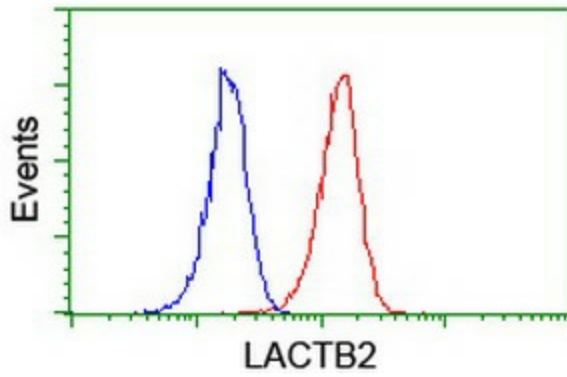
Immunohistochemical staining of paraffin-embedded Human Kidney tissue within the normal limits using anti-LACTB2 mouse monoclonal antibody. (Heat-induced epitope retrieval by 10mM citric buffer, pH6.0, 100°C for 10min, TA502586)



HEK293T cells transfected with either [RC201465] overexpress plasmid (Red) or empty vector control plasmid (Blue) were immunostained by anti-LACTB2 antibody (TA502586), and then analyzed by flow cytometry.



Flow cytometric Analysis of HeLa cells, using anti-LACTB2 antibody (TA502586), (Red), compared to a nonspecific negative control antibody, (Blue).



Flow cytometric Analysis of Jurkat cells, using anti-LACTB2 antibody (TA502586), (Red), compared to a nonspecific negative control antibody, (Blue).