

Product datasheet for **TA502581**

LACTB2 Mouse Monoclonal Antibody [Clone ID: OTI1A4]

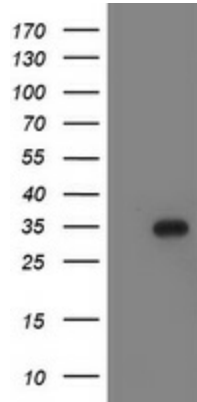
Product data:

Product Type:	Primary Antibodies
Clone Name:	OTI1A4
Applications:	FC, WB
Recommended Dilution:	WB 1:2000, FLOW 1:100
Reactivity:	Human
Host:	Mouse
Isotype:	IgG1
Clonality:	Monoclonal
Immunogen:	Full length human recombinant protein of human LACTB2 (NP_057111) produced in E.coli
Formulation:	PBS (pH 7.3) containing 1% BSA, 50% glycerol and 0.02% sodium azide.
Concentration:	0.56 mg/ml
Purification:	Purified from mouse ascites fluids or tissue culture supernatant by affinity chromatography (protein A/G)
Conjugation:	Unconjugated
Storage:	Store at -20°C as received.
Stability:	Stable for 12 months from date of receipt.
Predicted Protein Size:	32.6 kDa
Gene Name:	lactamase beta 2
Database Link:	NP_057111 Entrez Gene 51110 Human Q53H82
Synonyms:	CGI-83

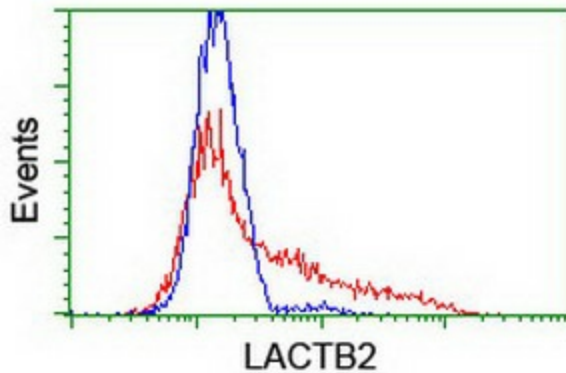


[View online »](#)

Product images:



HEK293T cells were transfected with the pCMV6-ENTRY control (Left lane) or pCMV6-ENTRY LACTB2 ([RC201465], Right lane) cDNA for 48 hrs and lysed. Equivalent amounts of cell lysates (5 ug per lane) were separated by SDS-PAGE and immunoblotted with anti-LACTB2. Positive lysates [LY414237] (100ug) and [LC414237] (20ug) can be purchased separately from OriGene.



HEK293T cells transfected with either [RC201465] overexpress plasmid (Red) or empty vector control plasmid (Blue) were immunostained by anti-LACTB2 antibody (TA502581), and then analyzed by flow cytometry.