

Product datasheet for **TA502566AM**

MEF2C Mouse Monoclonal Antibody (Biotin conjugated) [Clone ID: OTI4B10]

Product data:

Product Type:	Primary Antibodies
Clone Name:	OTI4B10
Applications:	FC, IF, WB
Recommended Dilution:	WB 1:500, IF 1:100, FLOW 1:100
Reactivity:	Human, Mouse, Rat
Host:	Mouse
Isotype:	IgG1
Clonality:	Monoclonal
Immunogen:	Full length human recombinant protein of human MEF2C (NP_002388) produced in HEK293T cell.
Formulation:	PBS (pH 7.3) containing 1% BSA, 50% glycerol and 0.02% sodium azide.
Concentration:	0.5 mg/ml
Purification:	Purified from mouse ascites fluids or tissue culture supernatant by affinity chromatography (protein A/G)
Conjugation:	Biotin
Storage:	Store at -20°C as received.
Stability:	Stable for 12 months from date of receipt.
Predicted Protein Size:	51 kDa
Gene Name:	myocyte enhancer factor 2C
Database Link:	NP_002388 Entrez Gene 17260 Mouse Entrez Gene 499497 Rat Entrez Gene 4208 Human Q06413

[View online »](#)

Background:

This locus encodes a member of the MADS box transcription enhancer factor 2 (MEF2) family of proteins, which play a role in myogenesis. The encoded protein, MEF2 polypeptide C, has both trans-activating and DNA binding activities. This protein may play a role in maintaining the differentiated state of muscle cells. Mutations and deletions at this locus have been associated with severe mental retardation, stereotypic movements, epilepsy, and cerebral malformation. Alternatively spliced transcript variants have been described. [provided by RefSeq]

Synonyms:

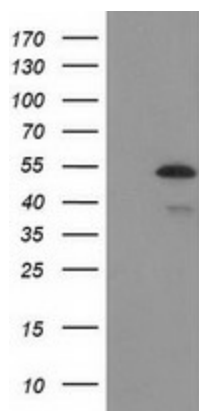
C5DELq14.3; DEL5q14.3

Protein Families:

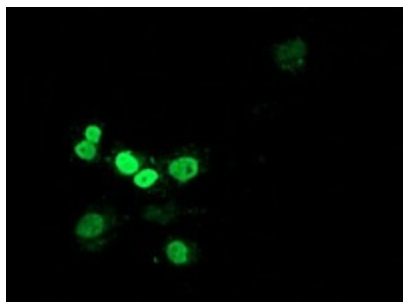
Transcription Factors

Protein Pathways:

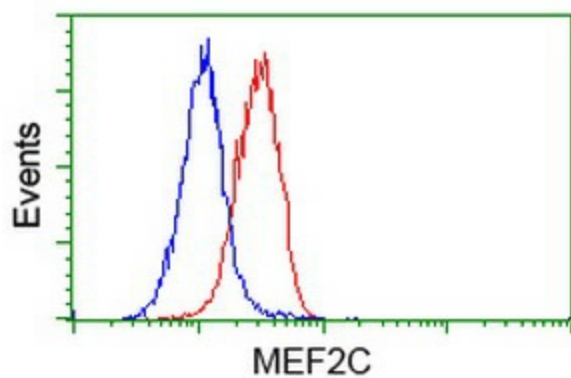
MAPK signaling pathway

Product images:


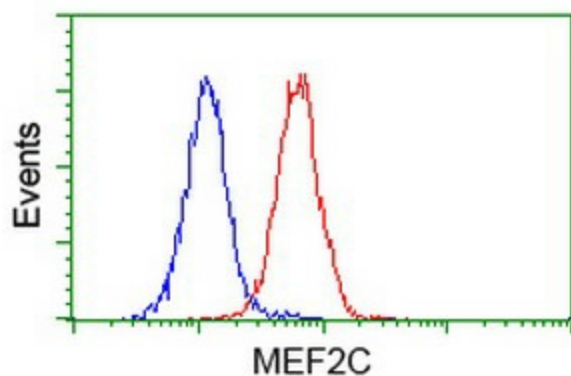
HEK293T cells were transfected with the pCMV6-ENTRY control (Left lane) or pCMV6-ENTRY MEF2C ([RC220584], Right lane) cDNA for 48 hrs and lysed. Equivalent amounts of cell lysates (5 ug per lane) were separated by SDS-PAGE and immunoblotted with anti-MEF2C. Positive lysates [LY419349] (100ug) and [LC419349] (20ug) can be purchased separately from OriGene.



Anti-MEF2C mouse monoclonal antibody ([TA502566]) immunofluorescent staining of COS7 cells transiently transfected by pCMV6-ENTRY MEF2C ([RC220584]).



Flow cytometric Analysis of HeLa cells, using anti-MEF2C antibody ([TA502566]), (Red), compared to a nonspecific negative control antibody (TA50011), (Blue).



Flow cytometric Analysis of Jurkat cells, using anti-MEF2C antibody ([TA502566]), (Red), compared to a nonspecific negative control antibody (TA50011), (Blue).