

## Product datasheet for **TA502552AM**

### MEF2C Mouse Monoclonal Antibody (Biotin conjugated) [Clone ID: OTI2F2]

#### Product data:

Product Type:	Primary Antibodies
Clone Name:	OTI2F2
Applications:	IHC, WB
Recommended Dilution:	WB 1:2000, IHC 1:150
Reactivity:	Human, Mouse, Rat
Host:	Mouse
Isotype:	IgG1
Clonality:	Monoclonal
Immunogen:	Full length human recombinant protein of human MEF2C(NP_002388) produced in HEK293T cell.
Formulation:	PBS (pH 7.3) containing 1% BSA, 50% glycerol and 0.02% sodium azide.
Concentration:	0.5 mg/ml
Purification:	Purified from mouse ascites fluids or tissue culture supernatant by affinity chromatography (protein A/G)
Conjugation:	Biotin
Storage:	Store at -20°C as received.
Stability:	Stable for 12 months from date of receipt.
Predicted Protein Size:	51 kDa
Gene Name:	myocyte enhancer factor 2C
Database Link:	<a href="#">NP_002388</a> <a href="#">Entrez Gene 17260 Mouse</a> <a href="#">Entrez Gene 499497 Rat</a> <a href="#">Entrez Gene 4208 Human</a> <a href="#">Q06413</a>



[View online »](#)

**Background:**

This locus encodes a member of the MADS box transcription enhancer factor 2 (MEF2) family of proteins, which play a role in myogenesis. The encoded protein, MEF2 polypeptide C, has both trans-activating and DNA binding activities. This protein may play a role in maintaining the differentiated state of muscle cells. Mutations and deletions at this locus have been associated with severe mental retardation, stereotypic movements, epilepsy, and cerebral malformation. Alternatively spliced transcript variants have been described. [provided by RefSeq]

**Synonyms:**

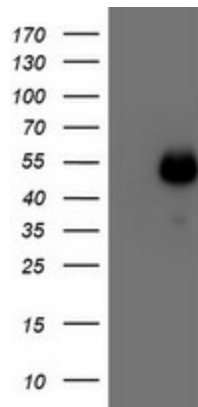
C5DELq14.3; DEL5q14.3

**Protein Families:**

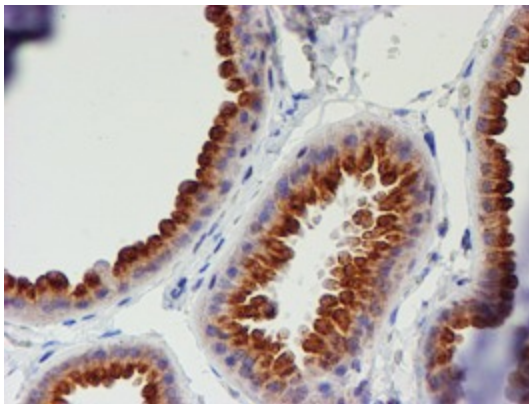
Transcription Factors

**Protein Pathways:**

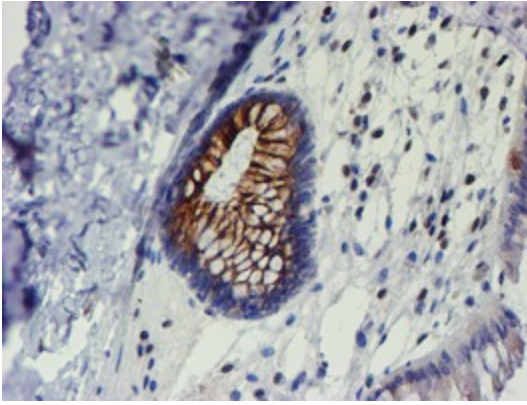
MAPK signaling pathway

**Product images:**


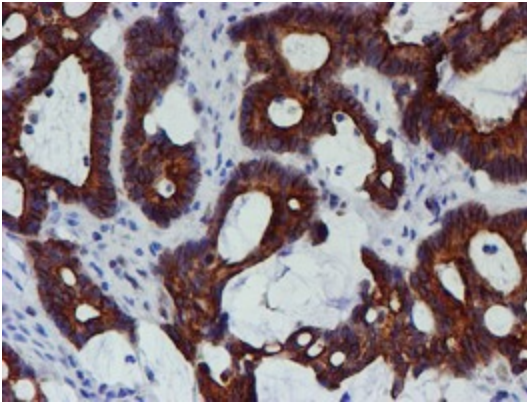
HEK293T cells were transfected with the pCMV6-ENTRY control (Left lane) or pCMV6-ENTRY MEF2C [RC220584], Right lane) cDNA for 48 hrs and lysed. Equivalent amounts of cell lysates (5 ug per lane) were separated by SDS-PAGE and immunoblotted with anti-MEF2C. Positive lysates [LY419349] (100ug) and [LC419349] (20ug) can be purchased separately from OriGene.



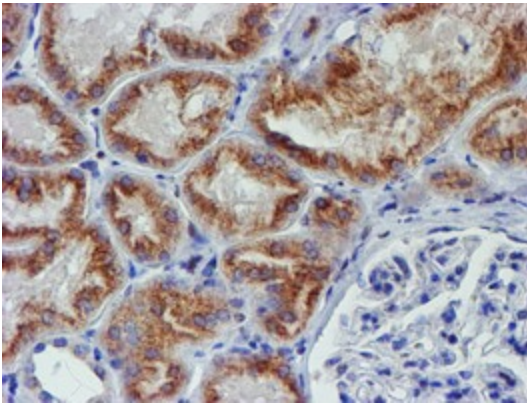
Immunohistochemical staining of paraffin-embedded Human breast tissue within the normal limits using anti-MEF2C mouse monoclonal antibody. (Heat-induced epitope retrieval by 10mM citric buffer, pH6.0, 100°C for 10min, [TA502552])



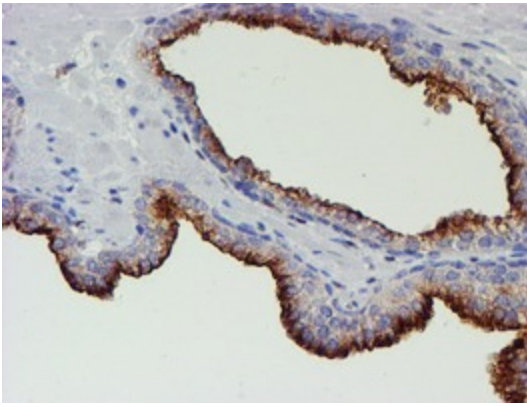
Immunohistochemical staining of paraffin-embedded Human colon tissue within the normal limits using anti-MEF2C mouse monoclonal antibody. (Heat-induced epitope retrieval by 10mM citric buffer, pH6.0, 100°C for 10min, [TA502552])



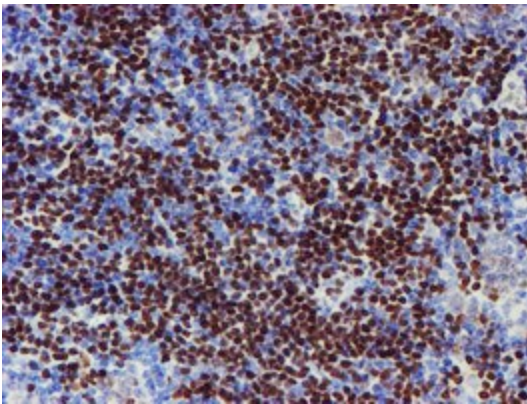
Immunohistochemical staining of paraffin-embedded Adenocarcinoma of Human colon tissue using anti-MEF2C mouse monoclonal antibody. (Heat-induced epitope retrieval by 10mM citric buffer, pH6.0, 100°C for 10min, [TA502552])



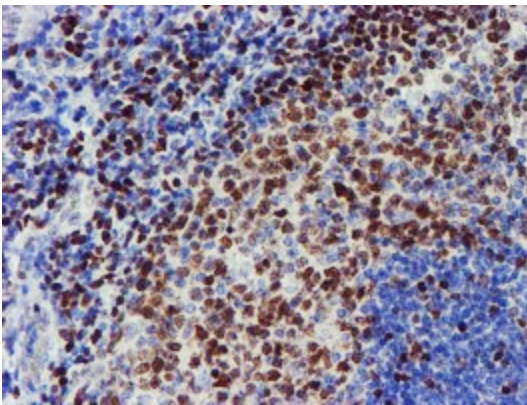
Immunohistochemical staining of paraffin-embedded Human Kidney tissue within the normal limits using anti-MEF2C mouse monoclonal antibody. (Heat-induced epitope retrieval by 10mM citric buffer, pH6.0, 100°C for 10min, [TA502552])



Immunohistochemical staining of paraffin-embedded Carcinoma of Human prostate tissue using anti-MEF2C mouse monoclonal antibody. (Heat-induced epitope retrieval by 10mM citric buffer, pH6.0, 100°C for 10min, [TA502552])



Immunohistochemical staining of paraffin-embedded Human lymphoma tissue using anti-MEF2C mouse monoclonal antibody. (Heat-induced epitope retrieval by 10mM citric buffer, pH6.0, 100°C for 10min, [TA502552])



Immunohistochemical staining of paraffin-embedded Human tonsil within the normal limits using anti-MEF2C mouse monoclonal antibody. (Heat-induced epitope retrieval by 10mM citric buffer, pH6.0, 100°C for 10min, [TA502552])