

Product datasheet for **TA502548AM**

POLR2E Mouse Monoclonal Antibody (Biotin conjugated) [Clone ID: OTI3B5]

Product data:

Product Type:	Primary Antibodies
Clone Name:	OTI3B5
Applications:	FC, IF, IHC, WB
Recommended Dilution:	WB 1:500~2000, IHC 1:150, FLOW 1:100, IF: 1:100
Reactivity:	Human, Dog, Rat, Monkey, Mouse
Host:	Mouse
Isotype:	IgG2a
Clonality:	Monoclonal
Immunogen:	Full length human recombinant protein of human POLR2E(NP_002686) produced in HEK293T cell.
Formulation:	PBS (pH 7.3) containing 1% BSA, 50% glycerol and 0.02% sodium azide.
Concentration:	0.5 mg/ml
Purification:	Purified from mouse ascites fluids or tissue culture supernatant by affinity chromatography (protein A/G)
Conjugation:	Biotin
Storage:	Store at -20°C as received.
Stability:	Stable for 12 months from date of receipt.
Predicted Protein Size:	24.4 kDa
Gene Name:	RNA polymerase II, I and III subunit E
Database Link:	NP_002686 Entrez Gene 66420 Mouse Entrez Gene 690966 Rat Entrez Gene 611859 Dog Entrez Gene 721178 Monkey Entrez Gene 5434 Human P19388



[View online »](#)

Background:

This gene encodes the fifth largest subunit of RNA polymerase II, the polymerase responsible for synthesizing messenger RNA in eukaryotes. This subunit is shared by the other two DNA-directed RNA polymerases and is present in two-fold molar excess over the other polymerase subunits. An interaction between this subunit and a hepatitis virus transactivating protein has been demonstrated, suggesting that interaction between transcriptional activators and the polymerase can occur through this subunit. A pseudogene is located on chromosome 11. [provided by RefSeq]

Synonyms:

hRPB25; hsRPB5; RPABC1; RPB5; XAP4

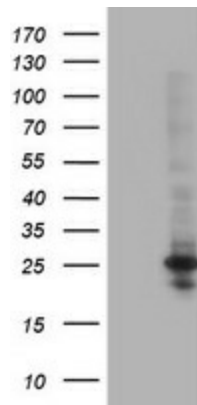
Protein Families:

Transcription Factors

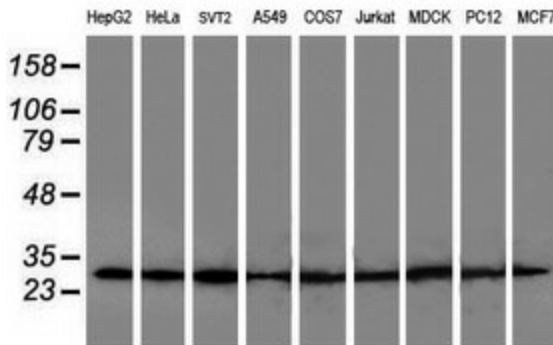
Protein Pathways:

Huntington's disease, Metabolic pathways, Purine metabolism, Pyrimidine metabolism, RNA polymerase

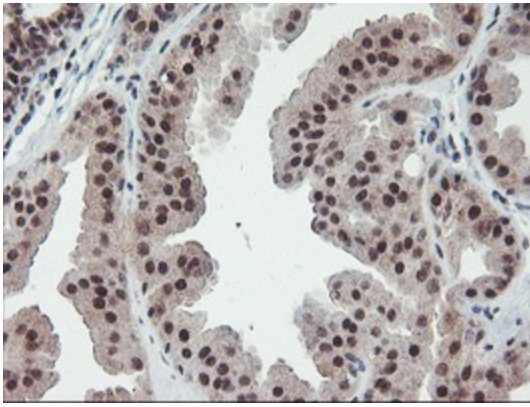
Product images:



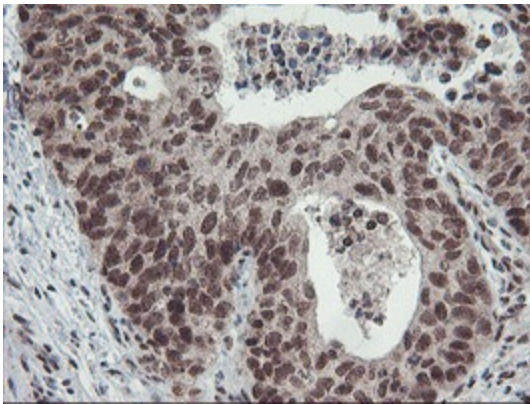
HEK293T cells were transfected with the pCMV6-ENTRY control (Cat# [PS100001], Left lane) or pCMV6-ENTRY POLR2E (Cat# [RC201266], Right lane) cDNA for 48 hrs and lysed. Equivalent amounts of cell lysates (5 ug per lane) were separated by SDS-PAGE and immunoblotted with anti-POLR2E (Cat# [TA502548]). Positive lysates [LY419161] (100ug) and [LC419161] (20ug) can be purchased separately from OriGene.



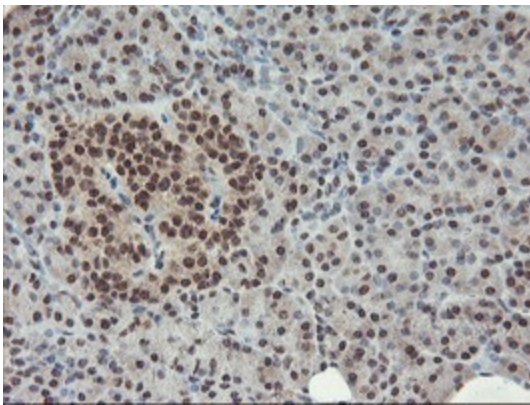
Western blot analysis of extracts (35ug) from 9 different cell lines by using anti-POLR2E monoclonal antibody.



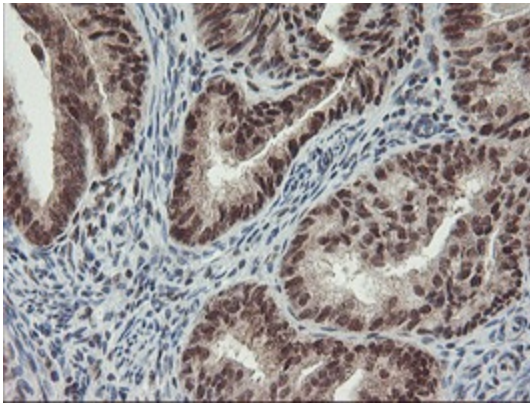
Immunohistochemical staining of paraffin-embedded Human breast tissue within the normal limits using anti-POLR2E mouse monoclonal antibody. (Heat-induced epitope retrieval by 10mM citric buffer, pH6.0, 100°C for 10min, [TA502548])



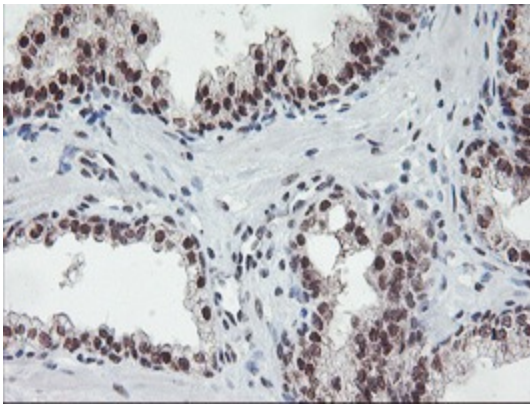
Immunohistochemical staining of paraffin-embedded Carcinoma of Human lung tissue using anti-POLR2E mouse monoclonal antibody. (Heat-induced epitope retrieval by 10mM citric buffer, pH6.0, 100°C for 10min, [TA502548])



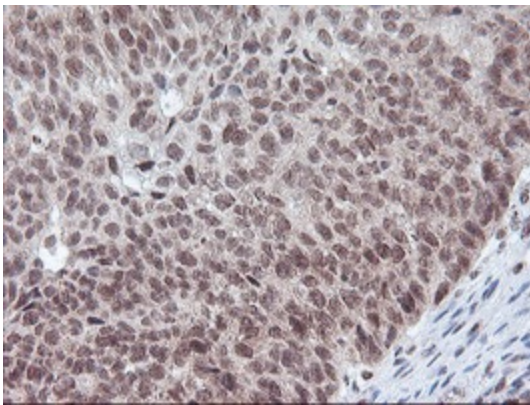
Immunohistochemical staining of paraffin-embedded Human pancreas tissue within the normal limits using anti-POLR2E mouse monoclonal antibody. (Heat-induced epitope retrieval by 10mM citric buffer, pH6.0, 100°C for 10min, [TA502548])



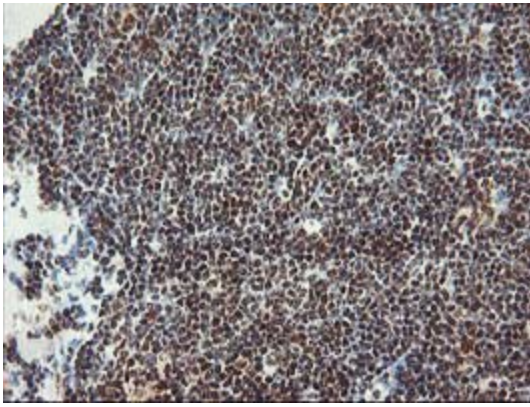
Immunohistochemical staining of paraffin-embedded Adenocarcinoma of Human endometrium tissue using anti-POLR2E mouse monoclonal antibody. (Heat-induced epitope retrieval by 10mM citric buffer, pH6.0, 100°C for 10min, [TA502548])



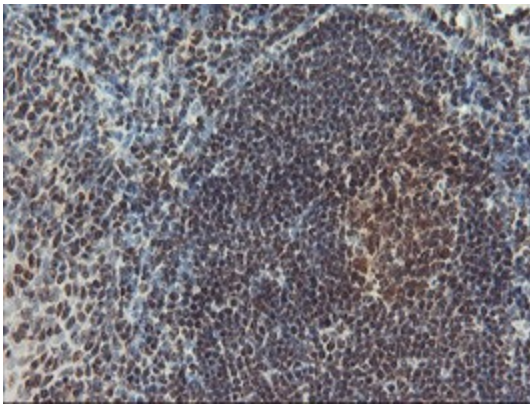
Immunohistochemical staining of paraffin-embedded Carcinoma of Human prostate tissue using anti-POLR2E mouse monoclonal antibody. (Heat-induced epitope retrieval by 10mM citric buffer, pH6.0, 100°C for 10min, [TA502548])



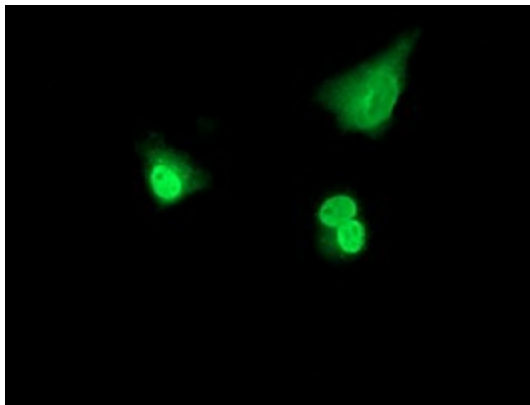
Immunohistochemical staining of paraffin-embedded Carcinoma of Human bladder tissue using anti-POLR2E mouse monoclonal antibody. (Heat-induced epitope retrieval by 10mM citric buffer, pH6.0, 100°C for 10min, [TA502548])



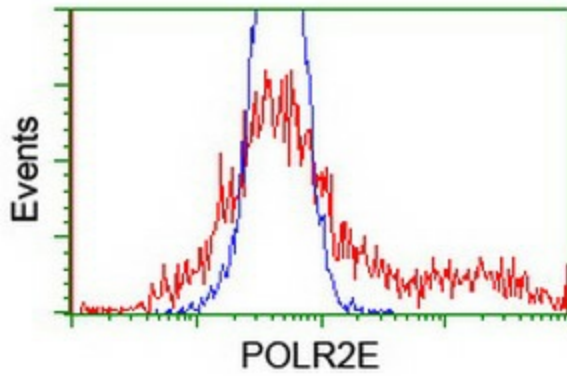
Immunohistochemical staining of paraffin-embedded Human lymphoma tissue using anti-POLR2E mouse monoclonal antibody. (Heat-induced epitope retrieval by 10mM citric buffer, pH6.0, 100°C for 10min, [TA502548])



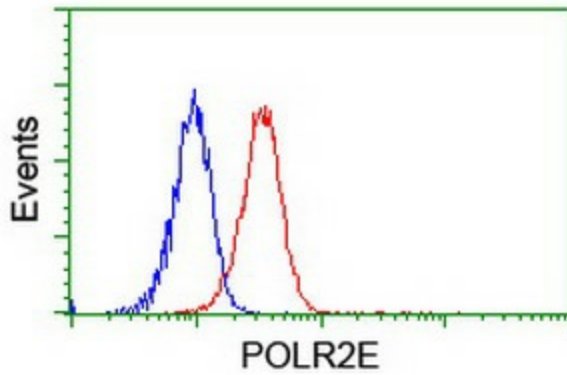
Immunohistochemical staining of paraffin-embedded Human tonsil within the normal limits using anti-POLR2E mouse monoclonal antibody. (Heat-induced epitope retrieval by 10mM citric buffer, pH6.0, 100°C for 10min, [TA502548])



Anti-POLR2E mouse monoclonal antibody ([TA502548]) immunofluorescent staining of COS7 cells transiently transfected by pCMV6-ENTRY POLR2E ([RC201266]).



HEK293T cells transfected with either [RC201266] overexpress plasmid (Red) or empty vector control plasmid (Blue) were immunostained by anti-POLR2E antibody ([TA502548]), and then analyzed by flow cytometry.



Flow cytometric Analysis of Jurkat cells, using anti-POLR2E antibody ([TA502548]), (Red), compared to a nonspecific negative control antibody, (Blue).