

## Product datasheet for **TA502547AM**

### **KATNAL1 Mouse Monoclonal Antibody (Biotin conjugated) [Clone ID: OTI6A4]**

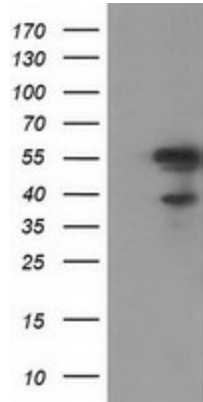
#### **Product data:**

Product Type:	Primary Antibodies
Clone Name:	OTI6A4
Applications:	FC, IHC, WB
Recommended Dilution:	WB 1:2000, IHC 1:150, FLOW 1:100
Reactivity:	Human, Mouse, Rat
Host:	Mouse
Isotype:	IgG1
Clonality:	Monoclonal
Immunogen:	Full length human recombinant protein of human KATNAL1 (NP_115492) produced in HEK293T cell.
Formulation:	PBS (pH 7.3) containing 1% BSA, 50% glycerol and 0.02% sodium azide.
Concentration:	0.5 mg/ml
Purification:	Purified from mouse ascites fluids or tissue culture supernatant by affinity chromatography (protein A/G)
Conjugation:	Biotin
Storage:	Store at -20°C as received.
Stability:	Stable for 12 months from date of receipt.
Predicted Protein Size:	55.2 kDa
Gene Name:	katanin catalytic subunit A1 like 1
Database Link:	<a href="#">NP_115492</a> <a href="#">Entrez Gene 288449</a> <a href="#">RatEntrez Gene 84056</a> <a href="#">Human Q9BW62</a>
Synonyms:	MGC2599

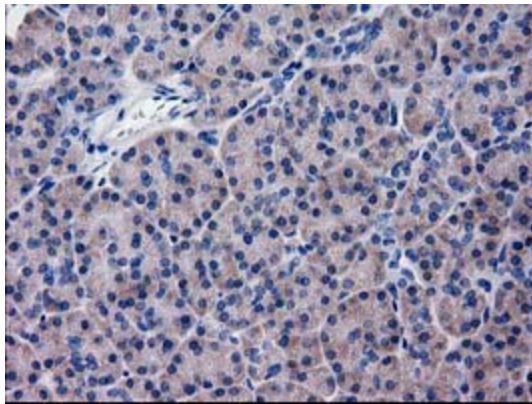


[View online »](#)

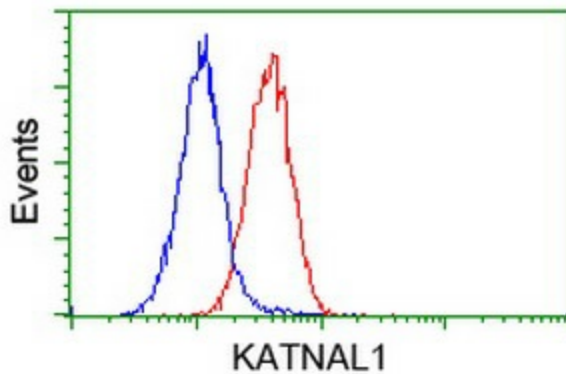
**Product images:**



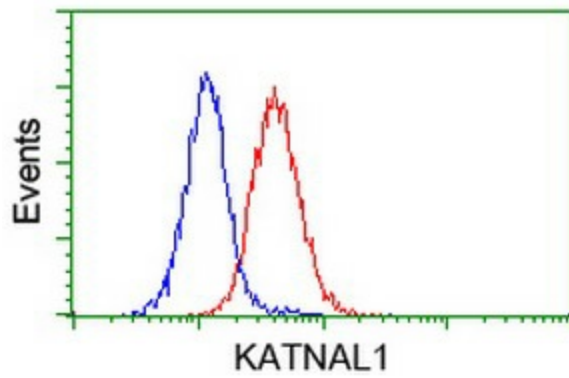
HEK293T cells were transfected with the pCMV6-ENTRY control (Cat# [PS100001], Left lane) or pCMV6-ENTRY KATNAL1 (Cat# [RC200828], Right lane) cDNA for 48 hrs and lysed. Equivalent amounts of cell lysates (5 ug per lane) were separated by SDS-PAGE and immunoblotted with anti-KATNAL1(Cat# [TA502547]). Positive lysates [LY403145] (100ug) and [LC403145] (20ug) can be purchased separately from OriGene.



Immunohistochemical staining of paraffin-embedded Human pancreas tissue within the normal limits using anti-KATNAL1 mouse monoclonal antibody. (Heat-induced epitope retrieval by 10mM citric buffer, pH6.0, 100°C for 10min, [TA502547])



Flow cytometric Analysis of HeLa cells, using anti-KATNAL1 antibody ([TA502547]), (Red), compared to a nonspecific negative control antibody (TA50011), (Blue).



Flow cytometric Analysis of Jurkat cells, using anti-KATNAL1 antibody ([TA502547]), (Red), compared to a nonspecific negative control antibody (TA50011), (Blue).