

Product datasheet for **TA502538**

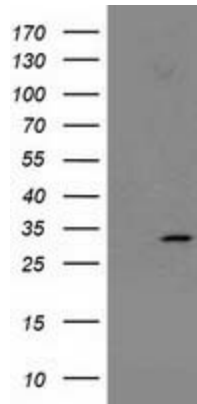
NNMT Mouse Monoclonal Antibody [Clone ID: OTI2A3]

Product data:

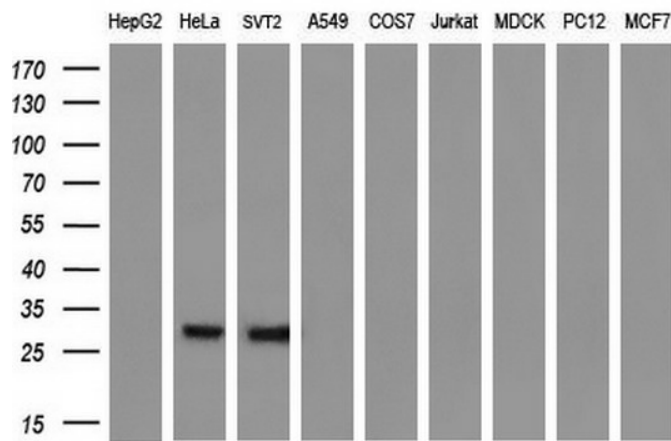
Product Type:	Primary Antibodies
Clone Name:	OTI2A3
Applications:	FC, IF, IHC, WB
Recommended Dilution:	WB 1:2000, IHC 1:150, IF 1:100, FLOW 1:100
Reactivity:	Human, Mouse, Rat
Host:	Mouse
Isotype:	IgG2b
Clonality:	Monoclonal
Immunogen:	Full length human recombinant protein of human NNMT (NP_006160) produced in HEK293T cell.
Formulation:	PBS (pH 7.3) containing 1% BSA, 50% glycerol and 0.02% sodium azide.
Concentration:	0.16 mg/ml
Purification:	Purified from mouse ascites fluids or tissue culture supernatant by affinity chromatography (protein A/G)
Conjugation:	Unconjugated
Storage:	Store at -20°C as received.
Stability:	Stable for 12 months from date of receipt.
Predicted Protein Size:	29.4 kDa
Gene Name:	nicotinamide N-methyltransferase
Database Link:	NP_006160 Entrez Gene 18113 Mouse Entrez Gene 300691 Rat Entrez Gene 4837 Human P40261
Background:	N-methylation is one method by which drug and other xenobiotic compounds are metabolized by the liver. This gene encodes the protein responsible for this enzymatic activity which uses S-adenosyl methionine as the methyl donor. [provided by RefSeq]
Synonyms:	nicotinamide N-methyltransferase
Protein Pathways:	Metabolic pathways, Nicotinate and nicotinamide metabolism



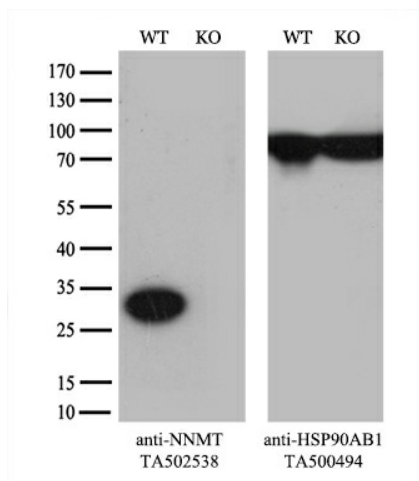
[View online »](#)

Product images:


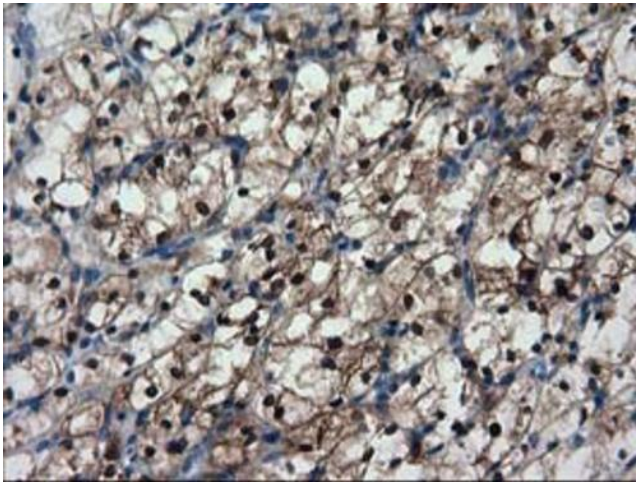
HEK293T cells were transfected with the pCMV6-ENTRY control (Left lane) or pCMV6-ENTRY NNMT ([RC200641], Right lane) cDNA for 48 hrs and lysed. Equivalent amounts of cell lysates (5 ug per lane) were separated by SDS-PAGE and immunoblotted with anti-NNMT. Positive lysates [LY401860] (100ug) and [LC401860] (20ug) can be purchased separately from OriGene.



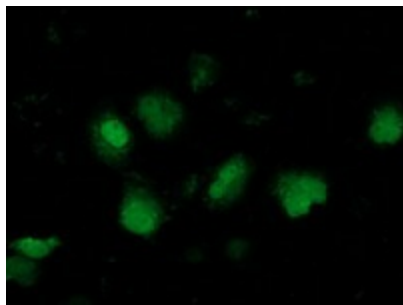
Western blot analysis of extracts (35ug) from 9 different cell lines by using anti-NNMT monoclonal antibody (HepG2: human; HeLa: human; SVT2: mouse; A549: human; COS7: monkey; Jurkat: human; MDCK: canine; PC12: rat; MCF7: human) (1:200).



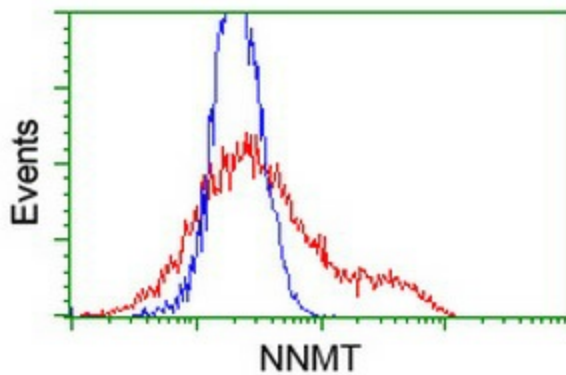
Equivalent amounts of cell lysates (10 ug per lane) of wild-type HeLa cells (WT, Cat# LC810HELA) and NNMT-Knockout HeLa cells (KO, Cat# [LC832761]) were separated by SDS-PAGE and immunoblotted with anti-NNMT monoclonal antibody TA502538 (1:500). Then the blotted membrane was stripped and reprobed with anti-HSP90 antibody as a loading control.



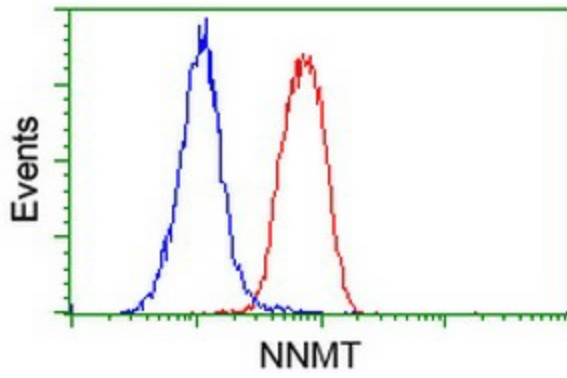
Immunohistochemical staining of paraffin-embedded Carcinoma of Human kidney tissue using anti-NNMT mouse monoclonal antibody. Heat-induced epitope retrieval by EDTA solution buffer pH 8.0 at 120°C for 3 min.



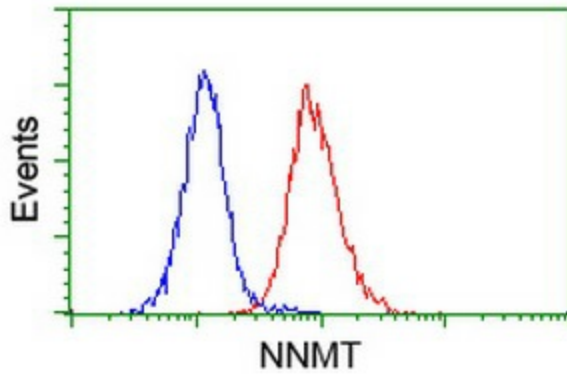
Anti-NNMT mouse monoclonal antibody (TA502538) immunofluorescent staining of COS7 cells transiently transfected by pCMV6-ENTRY NNMT ([RC200641]).



HEK293T cells transfected with either [RC200641] overexpress plasmid (Red) or empty vector control plasmid (Blue) were immunostained by anti-NNMT antibody (TA502538), and then analyzed by flow cytometry.



Flow cytometric Analysis of HeLa cells, using anti-NNMT antibody (TA502538), (Red), compared to a nonspecific negative control antibody (TA50011), (Blue).



Flow cytometric Analysis of Jurkat cells, using anti-NNMT antibody (TA502538), (Red), compared to a nonspecific negative control antibody (TA50011), (Blue).