

## Product datasheet for **TA502536BM**

### **BCAR1 Mouse Monoclonal Antibody (HRP conjugated) [Clone ID: OTI3A11]**

#### **Product data:**

<b>Product Type:</b>	Primary Antibodies
<b>Clone Name:</b>	OTI3A11
<b>Applications:</b>	FC, IF, IHC, WB
<b>Recommended Dilution:</b>	WB 1:500~2000, IHC 1:150, IF 1:100, FLOW 1:100
<b>Reactivity:</b>	Human, Dog, Rat, Monkey, Mouse
<b>Host:</b>	Mouse
<b>Isotype:</b>	IgG1
<b>Clonality:</b>	Monoclonal
<b>Immunogen:</b>	Full length human recombinant protein of human BCAR1 (NP_055382) produced in HEK293T cell.
<b>Formulation:</b>	PBS (pH 7.3) containing 1% BSA, 50% glycerol.
<b>Concentration:</b>	0.5 mg/ml
<b>Purification:</b>	Purified from mouse ascites fluids or tissue culture supernatant by affinity chromatography (protein A/G)
<b>Conjugation:</b>	HRP
<b>Storage:</b>	Store at -20°C as received.
<b>Stability:</b>	Stable for 12 months from date of receipt.
<b>Predicted Protein Size:</b>	93.2 kDa
<b>Gene Name:</b>	BCAR1 scaffold protein, Cas family member
<b>Database Link:</b>	<a href="#">NP_055382</a> <a href="#">Entrez Gene 12927 Mouse</a> <a href="#">Entrez Gene 25414 Rat</a> <a href="#">Entrez Gene 479648 Dog</a> <a href="#">Entrez Gene 713965 Monkey</a> <a href="#">Entrez Gene 9564 Human</a> <a href="#">P56945</a>
<b>Background:</b>	BCAR1, or CAS, is an Src (MIM 190090) family kinase substrate involved in various cellular events, including migration, survival, transformation, and invasion (Sawada et al., 2006 [PubMed 17129785]). [supplied by OMIM]
<b>Synonyms:</b>	CAS; CAS1; CASS1; CRKAS; P130Cas

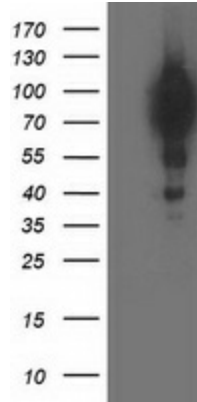


[View online »](#)

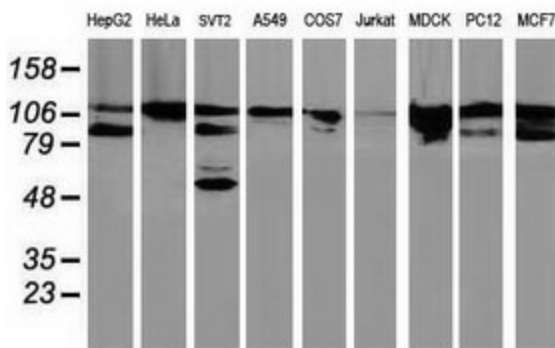
**Protein Families:** Druggable Genome

**Protein Pathways:** Chemokine signaling pathway, Focal adhesion, Leukocyte transendothelial migration, Regulation of actin cytoskeleton

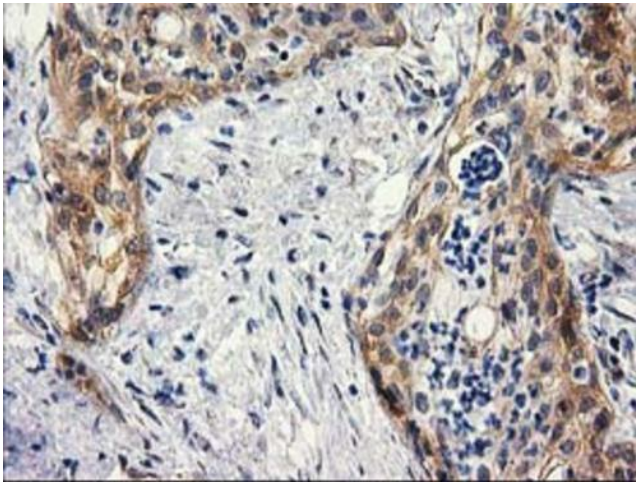
**Product images:**



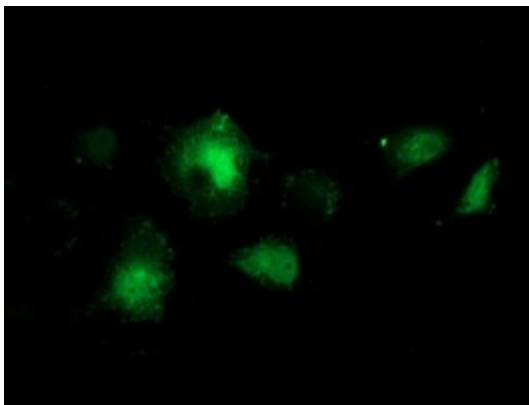
HEK293T cells were transfected with the pCMV6-ENTRY control (Left lane) or pCMV6-ENTRY BCAR1 ([RC209133], Right lane) cDNA for 48 hrs and lysed. Equivalent amounts of cell lysates (5 ug per lane) were separated by SDS-PAGE and immunoblotted with anti-BCAR1. Positive lysates [LY415204] (100ug) and [LC415204] (20ug) can be purchased separately from OriGene.



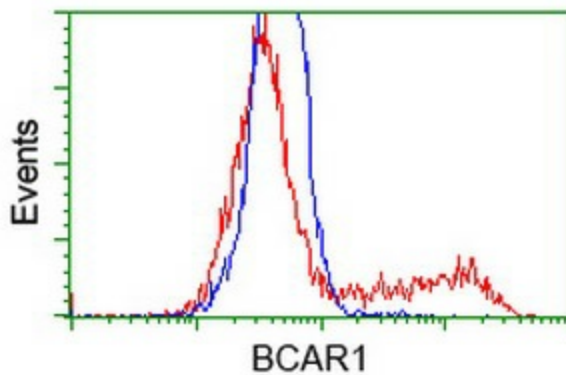
Western blot analysis of extracts (35ug) from 9 different cell lines by using anti-BCAR1 monoclonal antibody.



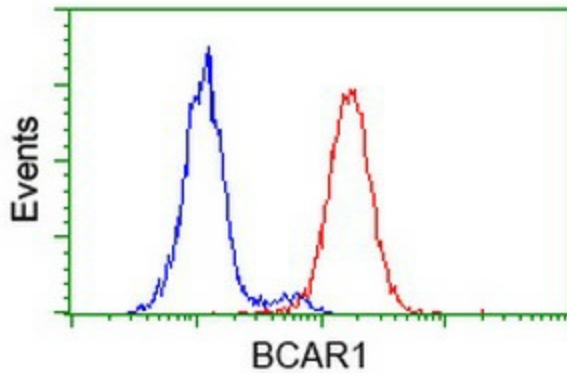
Immunohistochemical staining of paraffin-embedded Carcinoma of Human pancreas tissue using anti-BCAR1 mouse monoclonal antibody. (Heat-induced epitope retrieval by 10mM citric buffer, pH6.0, 100°C for 10min, [TA502536])



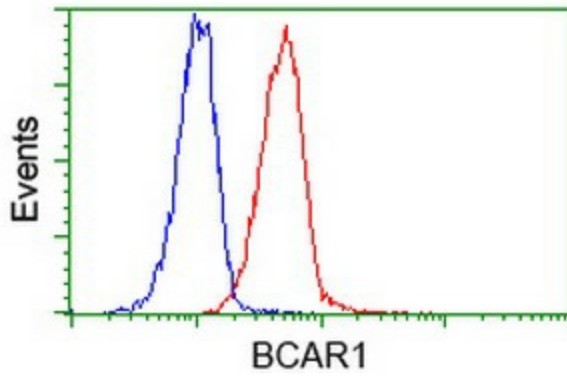
Anti-BCAR1 mouse monoclonal antibody ([TA502536]) immunofluorescent staining of COS7 cells transiently transfected by pCMV6-ENTRY BCAR1 ([RC209133]).



HEK293T cells transfected with either [RC209133] overexpress plasmid (Red) or empty vector control plasmid (Blue) were immunostained by anti-BCAR1 antibody ([TA502536]), and then analyzed by flow cytometry.



Flow cytometric Analysis of HeLa cells, using anti-BCAR1 antibody ([TA502536]), (Red), compared to a nonspecific negative control antibody, (Blue).



Flow cytometric Analysis of Jurkat cells, using anti-BCAR1 antibody ([TA502536]), (Red), compared to a nonspecific negative control antibody, (Blue).