

Product datasheet for **TA502529S**

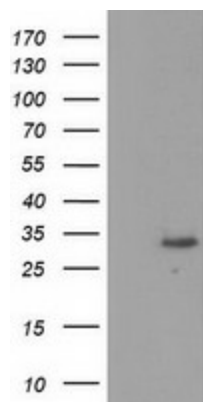
KCTD14 Mouse Monoclonal Antibody [Clone ID: OTI3A4]

Product data:

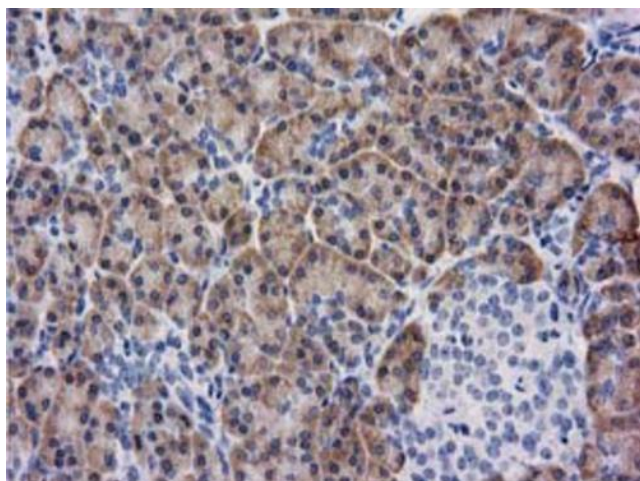
Product Type:	Primary Antibodies
Clone Name:	OTI3A4
Applications:	FC, IF, IHC, WB
Recommended Dilution:	WB 1:500, IHC 1:150, IF 1:100, FLOW 1:100
Reactivity:	Human
Host:	Mouse
Isotype:	IgG2a
Clonality:	Monoclonal
Immunogen:	Full length human recombinant protein of human KCTD14 (NP_076419) produced in HEK293T cell.
Formulation:	PBS (pH 7.3) containing 1% BSA, 50% glycerol and 0.02% sodium azide.
Concentration:	0.8 mg/ml
Purification:	Purified from mouse ascites fluids or tissue culture supernatant by affinity chromatography (protein A/G)
Conjugation:	Unconjugated
Storage:	Store at -20°C as received.
Stability:	Stable for 12 months from date of receipt.
Predicted Protein Size:	29.4 kDa
Gene Name:	potassium channel tetramerization domain containing 14
Database Link:	NP_076419 Entrez Gene 65987 Human Q9BQ13
Synonyms:	MGC2376
Protein Families:	Ion Channels: Other



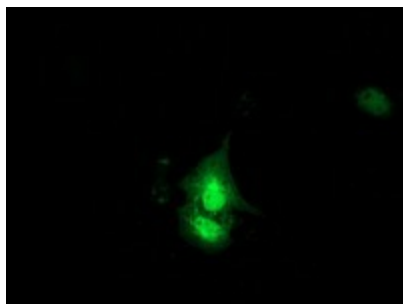
[View online »](#)

Product images:

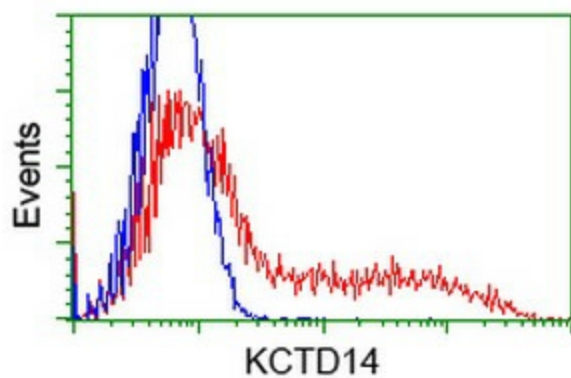
HEK293T cells were transfected with the pCMV6-ENTRY control (Left lane) or pCMV6-ENTRY KCTD14 ([RC200745], Right lane) cDNA for 48 hrs and lysed. Equivalent amounts of cell lysates (5 ug per lane) were separated by SDS-PAGE and immunoblotted with anti-KCTD14. Positive lysates [LY411435] (100ug) and [LC411435] (20ug) can be purchased separately from OriGene.



Immunohistochemical staining of paraffin-embedded Human pancreas tissue within the normal limits using anti-KCTD14 mouse monoclonal antibody. Heat-induced epitope retrieval by EDTA solution buffer pH 8.0 at 120°C for 3 min.



Anti-KCTD14 mouse monoclonal antibody ([TA502529]) immunofluorescent staining of COS7 cells transiently transfected by pCMV6-ENTRY KCTD14 ([RC200745]).



HEK293T cells transfected with either [RC200745] overexpress plasmid (Red) or empty vector control plasmid (Blue) were immunostained by anti-KCTD14 antibody ([TA502529]), and then analyzed by flow cytometry.