

Product datasheet for **TA502527S**

Beclin 1 (BECN1) Mouse Monoclonal Antibody [Clone ID: OTI3F3]

Product data:

Product Type:	Primary Antibodies
Clone Name:	OTI3F3
Applications:	FC, IF, IHC, WB
Recommended Dilution:	WB 1:500~2000, IHC 1:150, IF 1:100, FLOW 1:100
Reactivity:	Human, Rat, Monkey, Mouse
Host:	Mouse
Isotype:	IgG1
Clonality:	Monoclonal
Immunogen:	Full length human recombinant protein of human BECN1 (NP_003757) produced in HEK293T cell.
Formulation:	PBS (pH 7.3) containing 1% BSA, 50% glycerol and 0.02% sodium azide.
Concentration:	0.78 mg/ml
Purification:	Purified from mouse ascites fluids or tissue culture supernatant by affinity chromatography (protein A/G)
Conjugation:	Unconjugated
Storage:	Store at -20°C as received.
Stability:	Stable for 12 months from date of receipt.
Predicted Protein Size:	51.7 kDa
Gene Name:	beclin 1
Database Link:	NP_003757 Entrez Gene 56208 Mouse Entrez Gene 114558 Rat Entrez Gene 711649 Monkey Entrez Gene 8678 Human Q14457
Background:	Beclin-1 participates in the regulation of autophagy and has an important role in development, tumorigenesis, and neurodegeneration (Zhong et al., 2009 [PubMed 19270693]). [supplied by OMIM, Jul 2010]
Synonyms:	ATG6; beclin1; VPS30

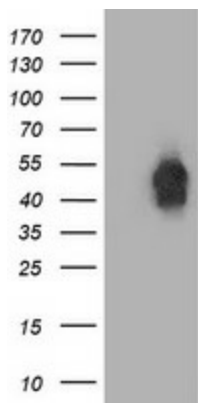


[View online »](#)

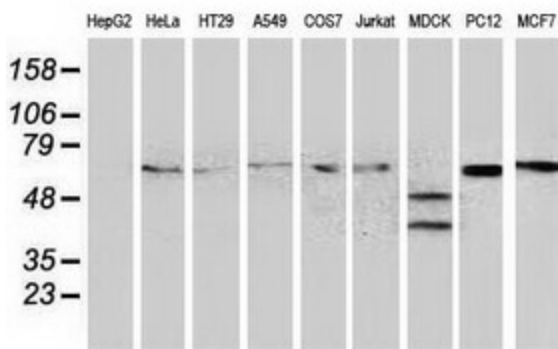
Protein Families: Druggable Genome

Protein Pathways: Regulation of autophagy

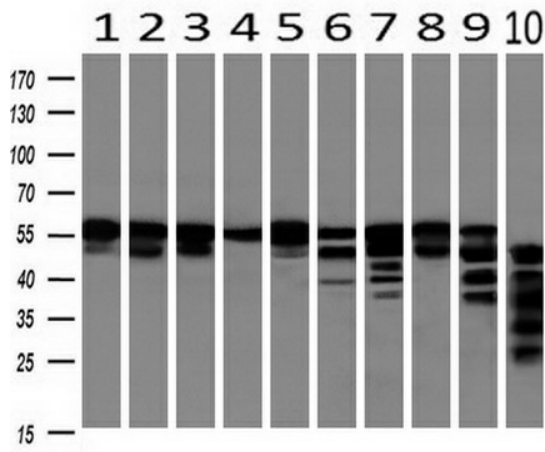
Product images:



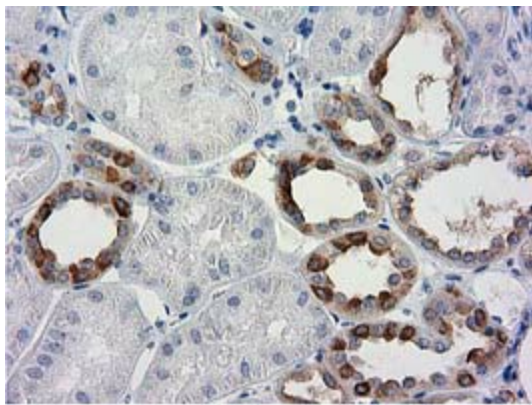
HEK293T cells were transfected with the pCMV6-ENTRY control (Left lane) or pCMV6-ENTRY BECN1 ([RC201629], Right lane) cDNA for 48 hrs and lysed. Equivalent amounts of cell lysates (5 ug per lane) were separated by SDS-PAGE and immunoblotted with anti-BECN1. Positive lysates [LY401239] (100ug) and [LC401239] (20ug) can be purchased separately from OriGene.



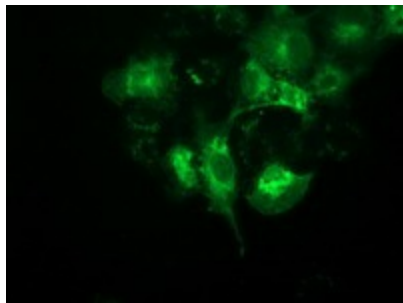
Western blot analysis of extracts (35ug) from 9 different cell lines by using anti-BECN1 monoclonal antibody (HepG2: human; HeLa: human; SVT2: mouse; A549: human; COS7: monkey; Jurkat: human; MDCK: canine; PC12: rat; MCF7: human).



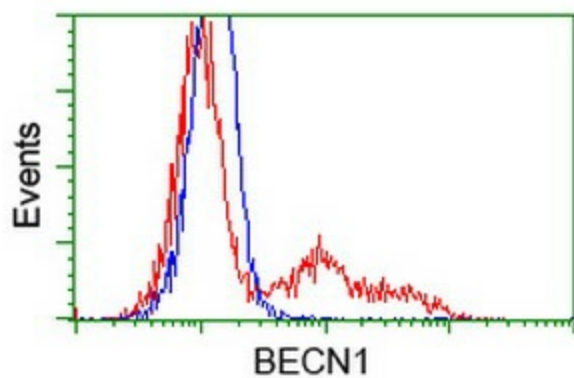
Western blot analysis of extracts (10ug) from 10 Human tissue by using anti-BECN1 monoclonal antibody at 1:200 (1: Testis; 2: Omentum; 3: Uterus; 4: Breast; 5: Brain; 6: Liver; 7: Ovary; 8: Thyroid gland; 9: colon;10: spleen).



Immunohistochemical staining of paraffin-embedded Human Kidney tissue within the normal limits using anti-BECN1 mouse monoclonal antibody. (Heat-induced epitope retrieval by 10mM citric buffer, pH6.0, 100°C for 10min, [TA502527])



Anti-BECN1 mouse monoclonal antibody ([TA502527]) immunofluorescent staining of COS7 cells transiently transfected by pCMV6-ENTRY BECN1 ([RC201629]).



HEK293T cells transfected with either [RC201629] overexpress plasmid (Red) or empty vector control plasmid (Blue) were immunostained by anti-BECN1 antibody ([TA502527]), and then analyzed by flow cytometry.