

Product datasheet for **TA502524**

Beta TRCP (BTRC) Mouse Monoclonal Antibody [Clone ID: OTI1A4]

Product data:

Product Type:	Primary Antibodies
Clone Name:	OTI1A4
Applications:	IF, WB
Recommended Dilution:	WB 1:500, IF 1:100
Reactivity:	Human, Mouse, Rat
Host:	Mouse
Isotype:	IgG1
Clonality:	Monoclonal
Immunogen:	Human fragment corresponding to amino acids 52-354 of human BTRC (NP_378663) produced in E.coli.
Formulation:	PBS (pH 7.3) containing 1% BSA, 50% glycerol and 0.02% sodium azide.
Concentration:	0.51 mg/ml
Purification:	Purified from mouse ascites fluids or tissue culture supernatant by affinity chromatography (protein A/G)
Conjugation:	Unconjugated
Storage:	Store at -20°C as received.
Stability:	Stable for 12 months from date of receipt.
Predicted Protein Size:	68.7 kDa
Gene Name:	beta-transducin repeat containing E3 ubiquitin protein ligase
Database Link:	NP_378663 Entrez Gene 12234 Mouse Entrez Gene 361765 Rat Entrez Gene 8945 Human Q9Y297



[View online »](#)

Background:

This gene encodes a member of the F-box protein family which is characterized by an approximately 40 amino acid motif, the F-box. The F-box proteins constitute one of the four subunits of ubiquitin protein ligase complex called SCFs (SKP1-cullin-F-box), which function in phosphorylation-dependent ubiquitination. The F-box proteins are divided into 3 classes: Fbws containing WD-40 domains, Fbls containing leucine-rich repeats, and Fbxs containing either different protein-protein interaction modules or no recognizable motifs. The protein encoded by this gene belongs to the Fbws class; in addition to an F-box, this protein contains multiple WD-40 repeats. This protein is homologous to Xenopus bTrCP1, yeast Met30, Neurospora Scon2 and Drosophila Slimb proteins. It interacts with HIV-1 Vpu and connects CD4 to the proteolytic machinery. It also associates specifically with phosphorylated I κ B α and beta-catenin destruction motifs, probably functioning in multiple transcriptional programs by activating the NF- κ B pathway and inhibiting the beta-catenin pathway. [provided by RefSeq]

Synonyms:

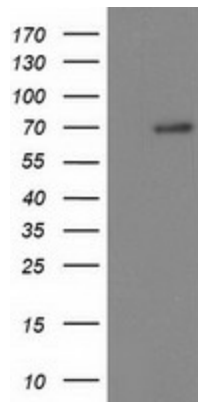
BETA-TRCP; betaTrCP; bTrCP; bTrCP1; FBW1A; FBXW1; FBXW1A; FWD1

Protein Families:

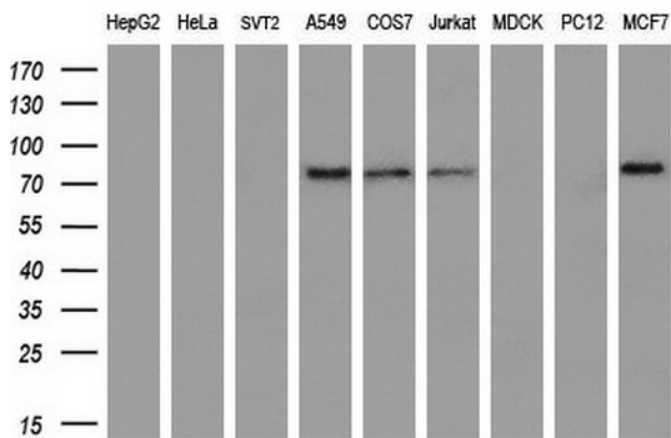
Druggable Genome

Protein Pathways:

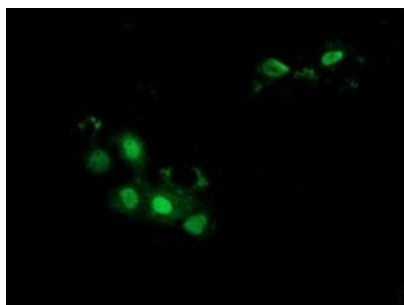
Hedgehog signaling pathway, Oocyte meiosis, Ubiquitin mediated proteolysis, Wnt signaling pathway

Product images:

HEK293T cells were transfected with the pCMV6-ENTRY control (Left lane) or pCMV6-ENTRY BTRC ([RC207025], Right lane) cDNA for 48 hrs and lysed. Equivalent amounts of cell lysates (5 μ g per lane) were separated by SDS-PAGE and immunoblotted with anti-BTRC.



Western blot analysis of extracts (35ug) from 9 different cell lines by using anti-BTRC monoclonal antibody (HepG2: human; HeLa: human; SVT2: mouse; A549: human; COS7: monkey; Jurkat: human; MDCK: canine; PC12: rat; MCF7: human) (1:200).



Anti-BTRC mouse monoclonal antibody (TA502524) immunofluorescent staining of COS7 cells transiently transfected by pCMV6-ENTRY BTRC ([RC207025]).