

## Product datasheet for **TA502512**

### **RASSF1 Mouse Monoclonal Antibody [Clone ID: OT18A11]**

#### **Product data:**

Product Type:	Primary Antibodies
Clone Name:	OT18A11
Applications:	IF, WB
Recommended Dilution:	WB 1:500, IF 1:100
Reactivity:	Human, Mouse, Rat
Host:	Mouse
Isotype:	IgG1
Clonality:	Monoclonal
Immunogen:	Full length human recombinant protein of human RASSF1 (NP_009113) produced in E.coli.
Formulation:	PBS (pH 7.3) containing 1% BSA, 50% glycerol and 0.02% sodium azide.
Concentration:	1 mg/ml
Purification:	Purified from mouse ascites fluids or tissue culture supernatant by affinity chromatography (protein A/G)
Conjugation:	Unconjugated
Storage:	Store at -20°C as received.
Stability:	Stable for 12 months from date of receipt.
Predicted Protein Size:	38.6 kDa
Gene Name:	Ras association domain family member 1
Database Link:	<a href="#">NP_009113</a> <a href="#">Entrez Gene 56289 Mouse</a> <a href="#">Entrez Gene 363140 Rat</a> <a href="#">Entrez Gene 11186 Human</a> <a href="#">Q9NS23</a>

**Background:** This gene encodes a protein similar to the RAS effector proteins. Loss or altered expression of this gene has been associated with the pathogenesis of a variety of cancers, which suggests the tumor suppressor function of this gene. The inactivation of this gene was found to be correlated with the hypermethylation of its CpG-island promoter region. The encoded protein was found to interact with DNA repair protein XPA. The protein was also shown to inhibit the accumulation of cyclin D1, and thus induce cell cycle arrest. Seven alternatively spliced transcript variants of this gene encoding distinct isoforms have been reported.



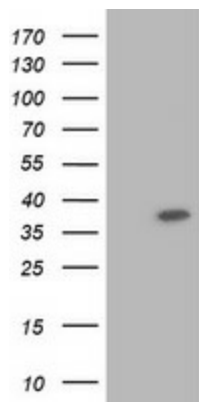
[View online »](#)

**Synonyms:** 123F2; NORE2A; RASSF1A; RDA32; REH3P21

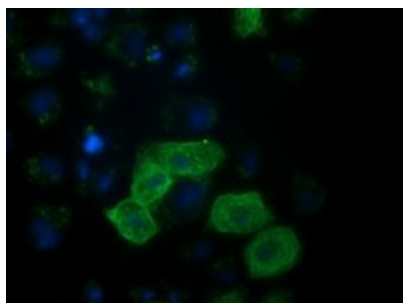
**Protein Families:** Druggable Genome

**Protein Pathways:** Bladder cancer, Non-small cell lung cancer, Pathways in cancer

### Product images:



HEK293T cells were transfected with the pCMV6-ENTRY control (Left lane) or pCMV6-ENTRY RASSF1 ([RC213525], Right lane) cDNA for 48 hrs and lysed. Equivalent amounts of cell lysates (5 ug per lane) were separated by SDS-PAGE and immunoblotted with anti-RASSF1. Positive lysates [LY402099] (100ug) and [LC402099] (20ug) can be purchased separately from OriGene.



Anti-RASSF1 mouse monoclonal antibody (TA502512) immunofluorescent staining of COS7 cells transiently transfected by pCMV6-ENTRY RASSF1 ([RC213525]).