

Product datasheet for **TA502509**

NORE1 (RASSF5) Mouse Monoclonal Antibody [Clone ID: OTI1H2]

Product data:

Product Type:	Primary Antibodies
Clone Name:	OTI1H2
Applications:	FC, WB
Recommended Dilution:	WB 1:500, FLOW 1:100
Reactivity:	Human, Mouse, Rat
Host:	Mouse
Isotype:	IgG1
Clonality:	Monoclonal
Immunogen:	Full length human recombinant protein of human RASSF5 (NP_872606) produced in HEK293T cell.
Formulation:	PBS (pH 7.3) containing 1% BSA, 50% glycerol and 0.02% sodium azide.
Concentration:	0.41 mg/ml
Purification:	Purified from mouse ascites fluids or tissue culture supernatant by affinity chromatography (protein A/G)
Conjugation:	Unconjugated
Storage:	Store at -20°C as received.
Stability:	Stable for 12 months from date of receipt.
Predicted Protein Size:	30.2 kDa
Gene Name:	Ras association domain family member 5
Database Link:	NP_872606 Entrez Gene 54354 Mouse Entrez Gene 54355 Rat Entrez Gene 83593 Human Q8WWW0
Background:	This gene is a member of the Ras association domain family. It functions as a tumor suppressor, and is inactivated in a variety of cancers. The encoded protein localizes to centrosomes and microtubules, and associates with the GTP-activated forms of Ras, Rap1, and several other Ras-like small GTPases. The protein regulates lymphocyte adhesion and suppresses cell growth in response to activated Rap1 or Ras. Multiple transcript variants encoding different isoforms have been found for this gene. [provided by RefSeq]



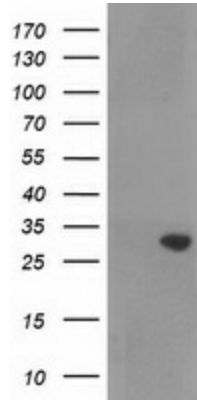
[View online »](#)

Synonyms: Maxp1; NORE1; NORE1A; NORE1B; RAPL; RASSF3

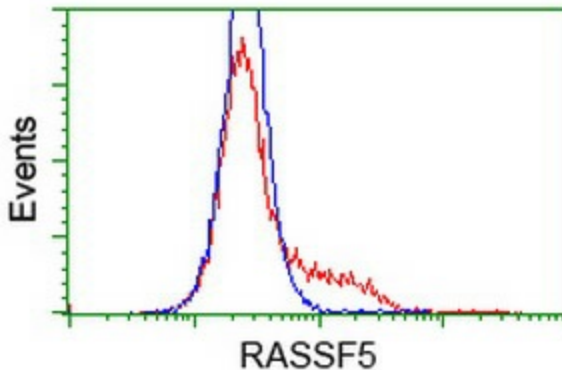
Protein Families: Druggable Genome

Protein Pathways: Leukocyte transendothelial migration, Non-small cell lung cancer, Pathways in cancer

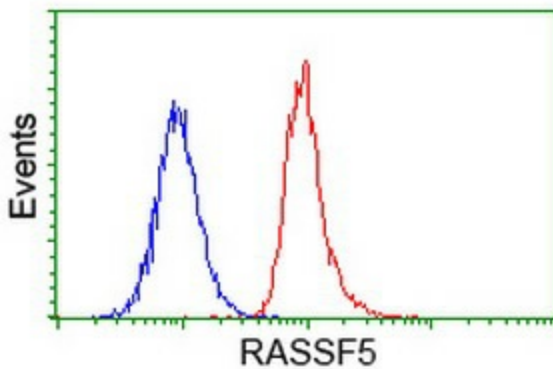
Product images:



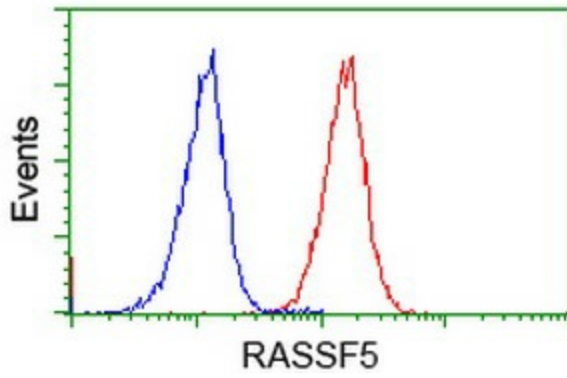
HEK293T cells were transfected with the pCMV6-ENTRY control (Cat# [PS100001], Left lane) or pCMV6-ENTRY RASSF5 (Cat# [RC203854], Right lane) cDNA for 48 hrs and lysed. Equivalent amounts of cell lysates (5 ug per lane) were separated by SDS-PAGE and immunoblotted with anti-RASSF5 (Cat# TA502509). Positive lysates [LY405440] (100ug) and [LC405440] (20ug) can be purchased separately from OriGene.



HEK293T cells transfected with either [RC203854] overexpress plasmid (Red) or empty vector control plasmid (Blue) were immunostained by anti-RASSF5 antibody (TA502509), and then analyzed by flow cytometry.



Flow cytometric Analysis of HeLa cells, using anti-RASSF5 antibody (TA502509), (Red), compared to a nonspecific negative control antibody (TA50011), (Blue).



Flow cytometric Analysis of Jurkat cells, using anti-RASSF5 antibody (TA502509), (Red), compared to a nonspecific negative control antibody (TA50011), (Blue).