

## Product datasheet for **TA502507M**

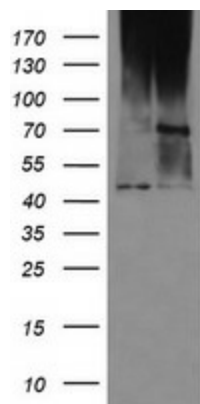
### **MAB21L3 Mouse Monoclonal Antibody [Clone ID: OTI2A3]**

#### **Product data:**

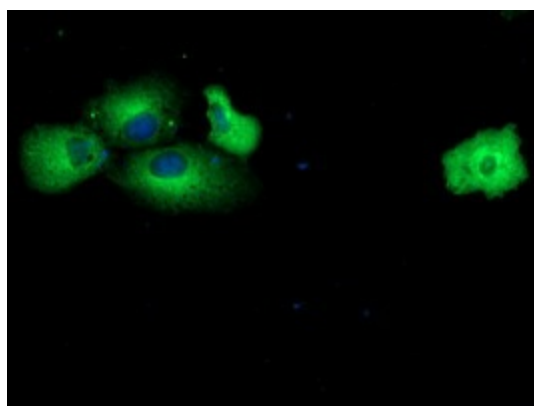
Product Type:	Primary Antibodies
Clone Name:	OTI2A3
Applications:	WB
Recommended Dilution:	WB 1:500, IF 1:100, FLOW 1:100
Reactivity:	Human
Host:	Mouse
Isotype:	IgG1
Clonality:	Monoclonal
Immunogen:	Full length human recombinant protein of human C1orf161 (NP_689580) produced in HEK293T cell.
Formulation:	PBS (pH 7.3) containing 1% BSA, 50% glycerol and 0.02% sodium azide.
Concentration:	0.78 mg/ml
Purification:	Purified from mouse ascites fluids or tissue culture supernatant by affinity chromatography (protein A/G)
Conjugation:	Unconjugated
Storage:	Store at -20°C as received.
Stability:	Stable for 12 months from date of receipt.
Predicted Protein Size:	42.2 kDa
Gene Name:	mab-21 like 3
Database Link:	<a href="#">NP_689580</a> <a href="#">Entrez Gene 126868 Human</a> <a href="#">Q8N8X9</a>
Synonyms:	C1orf161

[View online »](#)

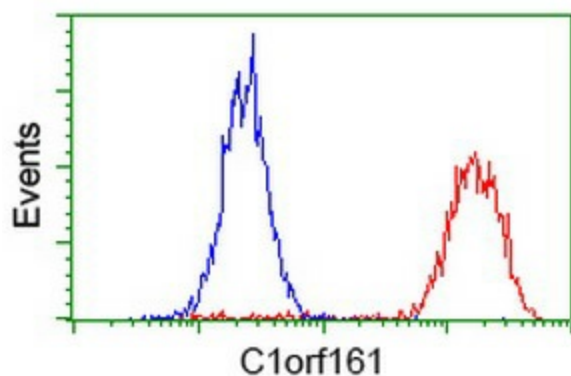
## Product images:



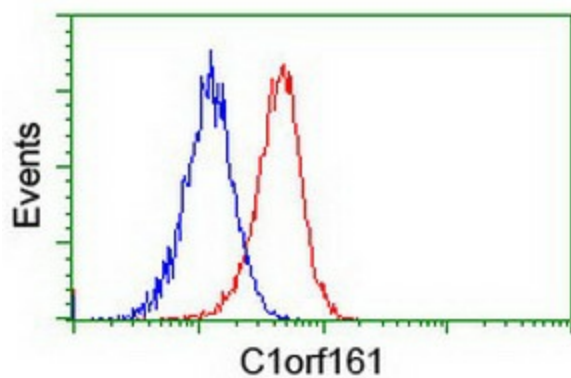
HEK293T cells were transfected with the pCMV6-ENTRY control (Cat# [PS100001], Left lane) or pCMV6-ENTRY C1orf161 (Cat# [RC217974], Right lane) cDNA for 48 hrs and lysed. Equivalent amounts of cell lysates (5 ug per lane) were separated by SDS-PAGE and immunoblotted with anti-C1orf161 (Cat# [TA502507]). Positive lysates [LY407616] (100ug) and [LC407616] (20ug) can be purchased separately from OriGene.



Anti-C1orf161 mouse monoclonal antibody ([TA502507]) immunofluorescent staining of COS7 cells transiently transfected by pCMV6-ENTRY C1orf161 ([RC217974]).



Flow cytometric Analysis of HeLa cells, using anti-C1orf161 antibody ([TA502507]), (Red), compared to a nonspecific negative control antibody, (Blue).



Flow cytometric Analysis of Jurkat cells, using anti-C1orf161 antibody ([TA502507]), (Red), compared to a nonspecific negative control antibody, (Blue).