

## Product datasheet for **TA502506**

### Malignant T cell amplified sequence 1 (MCTS1) Mouse Monoclonal Antibody [Clone ID: OTI 5B5]

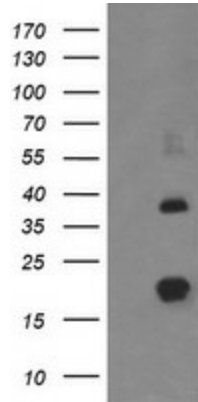
#### Product data:

Product Type:	Primary Antibodies
Clone Name:	OTI 5B5
Applications:	IHC, WB
Recommended Dilution:	WB 1:1000, IHC 1:150
Reactivity:	Human, Mouse, Rat
Host:	Mouse
Isotype:	IgG2a
Clonality:	Monoclonal
Immunogen:	Human recombinant protein fragment corresponding to amino acids 1-181 of human MCTS1 (NP_054779) produced in E.coli.
Formulation:	PBS (pH 7.3) containing 1% BSA, 50% glycerol and 0.02% sodium azide.
Concentration:	0.77 mg/ml
Purification:	Purified from mouse ascites fluids or tissue culture supernatant by affinity chromatography (protein A/G)
Conjugation:	Unconjugated
Storage:	Store at -20°C as received.
Stability:	Stable for 12 months from date of receipt.
Predicted Protein Size:	20.4 kDa
Gene Name:	MCTS1 re-initiation and release factor
Database Link:	<a href="#">NP_054779</a> <a href="#">Entrez Gene 68995 Mouse</a> <a href="#">Entrez Gene 302500 Rat</a> <a href="#">Entrez Gene 28985 Human</a> <a href="#">Q9ULC4</a>
Synonyms:	MCT-1; MCT1
Protein Families:	Druggable Genome

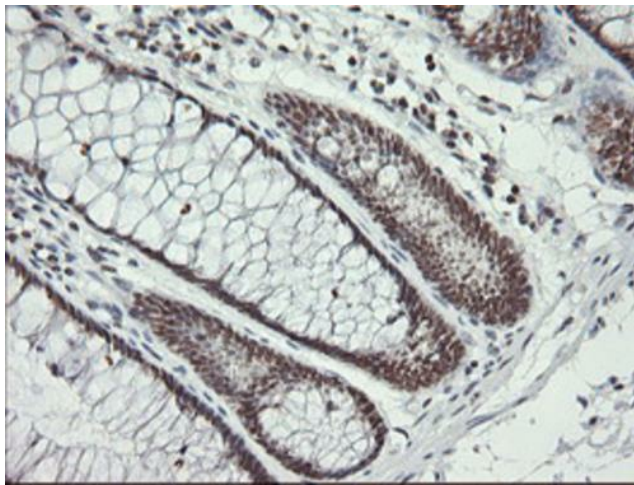


[View online »](#)

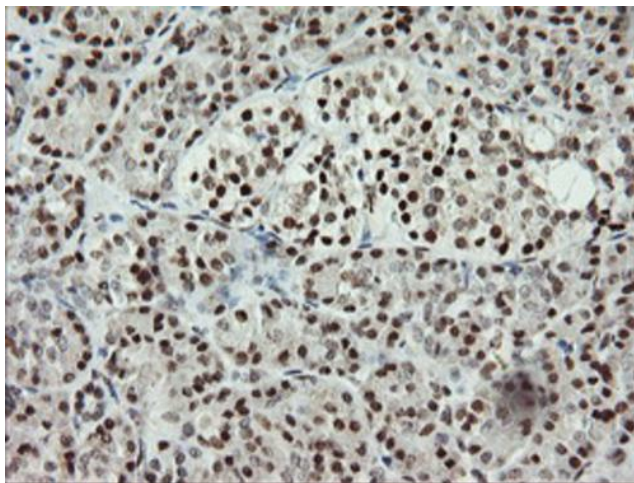
**Product images:**



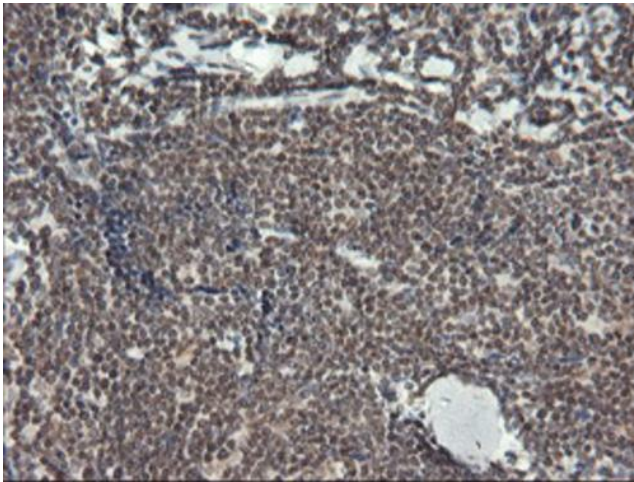
Negative control *E. coli* lysate (Left lane) or *E. coli* lysate containing recombinant protein fragment for human MCTS1 (NP\_054779) gene (amino acids 1-181) (Right lane). Equivalent amounts (5 ug per lane) were separated by SDS-PAGE and then immunoblotted with anti-MCTS1.



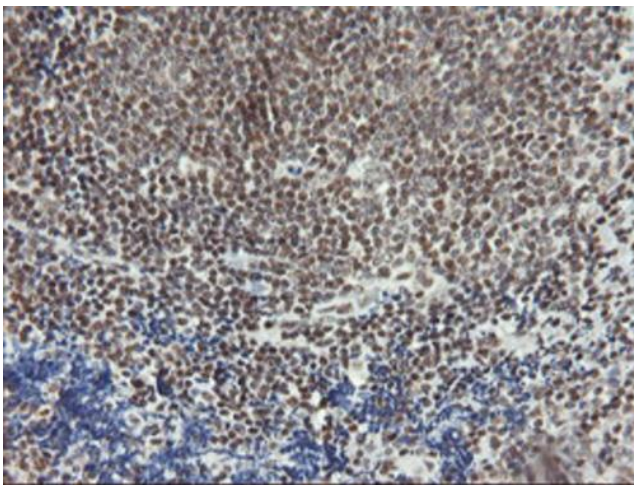
Immunohistochemical staining of paraffin-embedded Human colon tissue within the normal limits using anti-MCTS1 mouse monoclonal antibody. Heat-induced epitope retrieval by EDTA solution buffer pH 8.0 at 120°C for 3 min.



Immunohistochemical staining of paraffin-embedded Human pancreas tissue within the normal limits using anti-MCTS1 mouse monoclonal antibody. Heat-induced epitope retrieval by EDTA solution buffer pH 8.0 at 120°C for 3 min.



Immunohistochemical staining of paraffin-embedded Human lymphoma tissue using anti-MCTS1 mouse monoclonal antibody. Heat-induced epitope retrieval by EDTA solution buffer pH 8.0 at 120°C for 3 min.



Immunohistochemical staining of paraffin-embedded Human tonsil within the normal limits using anti-MCTS1 mouse monoclonal antibody. Heat-induced epitope retrieval by EDTA solution buffer pH 8.0 at 120°C for 3 min.