

## Product datasheet for **TA502504BM**

### UBA2 Mouse Monoclonal Antibody (HRP conjugated) [Clone ID: OTI4A3]

#### Product data:

Product Type:	Primary Antibodies
Clone Name:	OTI4A3
Applications:	IF, IHC, WB
Recommended Dilution:	WB 1:500~2000, IHC 1:150, IF 1:100
Reactivity:	Human, Dog, Rat, Monkey, Mouse
Host:	Mouse
Isotype:	IgG2a
Clonality:	Monoclonal
Immunogen:	Full length human recombinant protein of human UBA2 (NP_005490) produced in HEK293T cell.
Formulation:	PBS (pH 7.3) containing 1% BSA, 50% glycerol.
Concentration:	0.5 mg/ml
Purification:	Purified from mouse ascites fluids or tissue culture supernatant by affinity chromatography (protein A/G)
Conjugation:	HRP
Storage:	Store at -20°C as received.
Stability:	Stable for 12 months from date of receipt.
Predicted Protein Size:	71 kDa
Gene Name:	ubiquitin like modifier activating enzyme 2
Database Link:	<a href="#">NP_005490</a> <a href="#">Entrez Gene 308508 Rat</a> <a href="#">Entrez Gene 476490 Dog</a> <a href="#">Entrez Gene 705808 Monkey</a> <a href="#">Entrez Gene 10054 Human</a> <a href="#">Q9UBT2</a>
Background:	Posttranslational modification of proteins by the addition of the small protein SUMO (see SUMO1; MIM 601912), or sumoylation, regulates protein structure and intracellular localization. SAE1 (MIM 613294) and UBA2 form a heterodimer that functions as a SUMO-activating enzyme for the sumoylation of proteins (Okuma et al., 1999 [PubMed 9920803]). [supplied by OMIM]

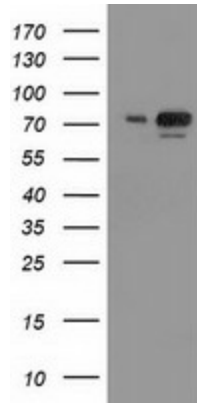


[View online »](#)

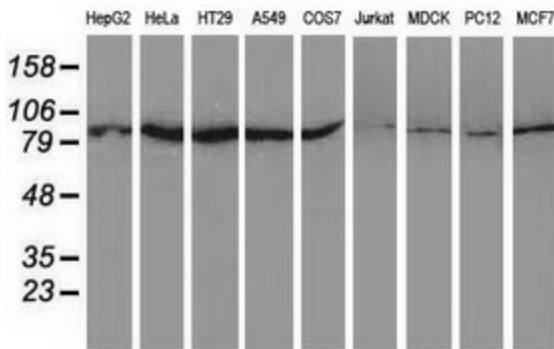
**Synonyms:** ARX; HRIHFB2115; SAE2

**Protein Pathways:** Ubiquitin mediated proteolysis

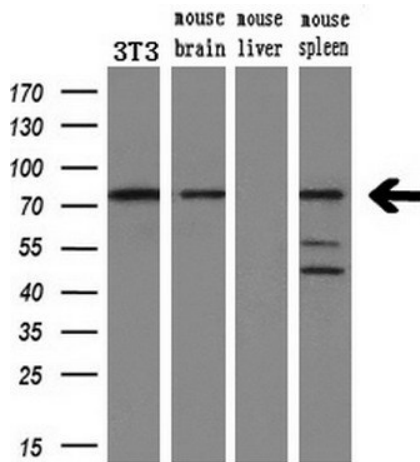
**Product images:**



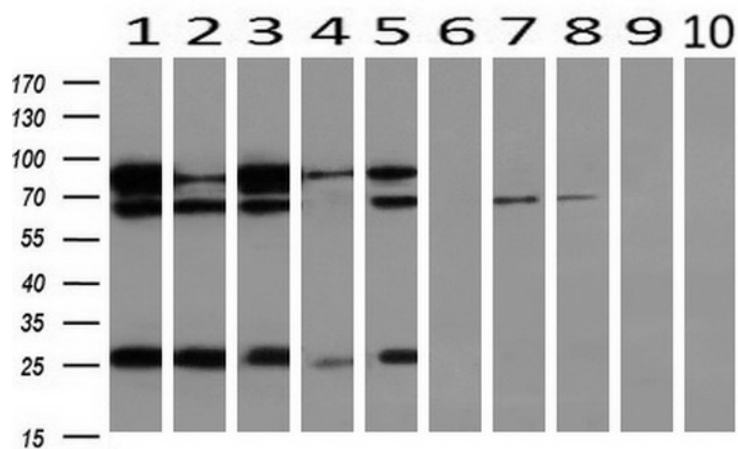
HEK293T cells were transfected with the pCMV6-ENTRY control (Cat# [PS100001], Left lane) or pCMV6-ENTRY UBA2 (Cat# [RC201288], Right lane) cDNA for 48 hrs and lysed. Equivalent amounts of cell lysates (5 ug per lane) were separated by SDS-PAGE and immunoblotted with anti-UBA2(Cat# [TA502504]). Positive lysates [LY417267] (100ug) and [LC417267] (20ug) can be purchased separately from OriGene.



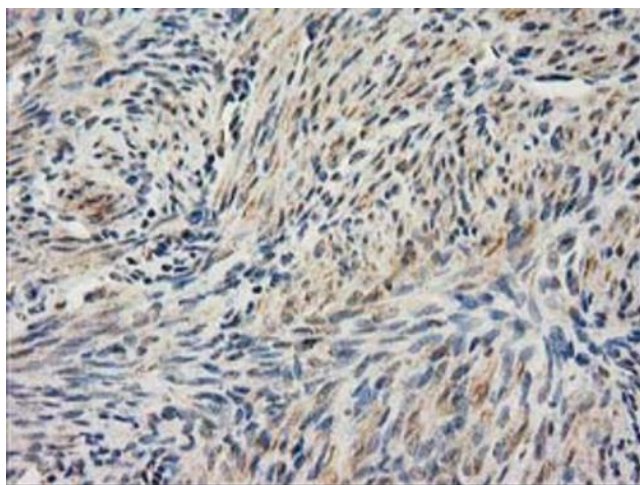
Western blot analysis of extracts (35ug) from 9 different cell lines by using anti-UBA2 monoclonal antibody.



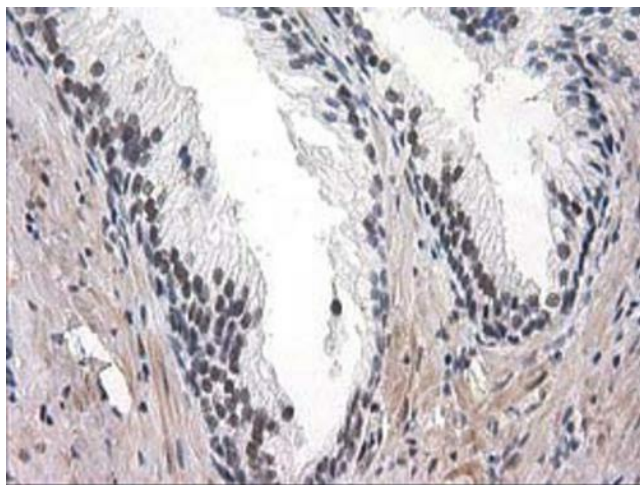
Western blot analysis of extracts (10ug) from a mouse cell line and 3 different mouse tissues by using anti-UBA2 monoclonal antibody (1:200).



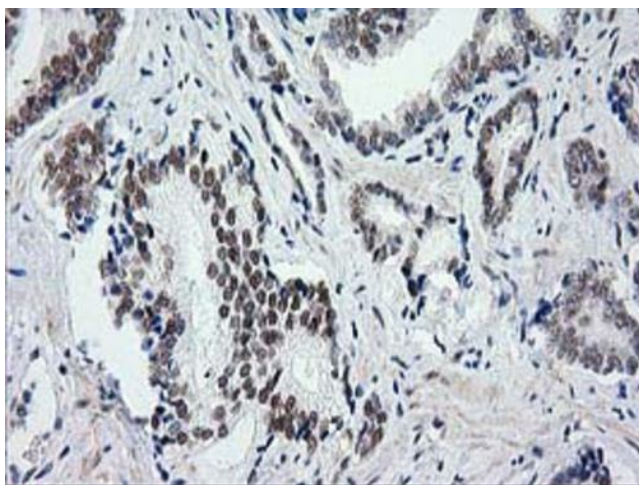
Western blot analysis of extracts (10ug) from 10 Human tissue by using anti-UBA2 monoclonal antibody at 1:200 (1: Testis; 2: Omentum; 3: Uterus; 4: Breast; 5: Brain; 6: Liver; 7: Ovary; 8: Thyroid gland; 9: colon;10: spleen).



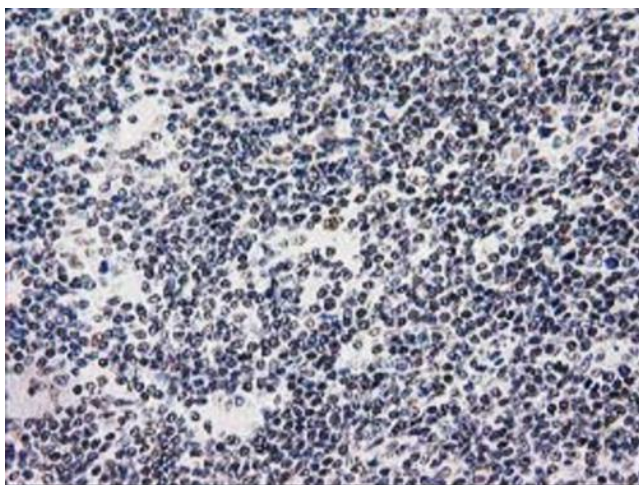
Immunohistochemical staining of paraffin-embedded Human endometrium tissue within the normal limits using anti-UBA2 mouse monoclonal antibody. (Heat-induced epitope retrieval by 10mM citric buffer, pH6.0, 100°C for 10min, [TA502504])



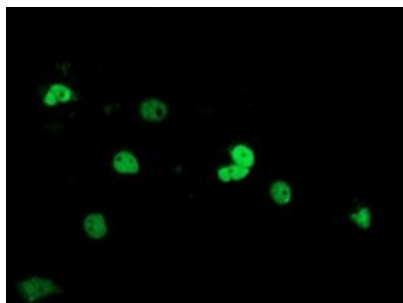
Immunohistochemical staining of paraffin-embedded Human prostate tissue within the normal limits using anti-UBA2 mouse monoclonal antibody. (Heat-induced epitope retrieval by 10mM citric buffer, pH6.0, 100°C for 10min, [TA502504])



Immunohistochemical staining of paraffin-embedded Carcinoma of Human prostate tissue using anti-UBA2 mouse monoclonal antibody. (Heat-induced epitope retrieval by 10mM citric buffer, pH6.0, 100°C for 10min, [TA502504])



Immunohistochemical staining of paraffin-embedded Human lymphoma tissue using anti-UBA2 mouse monoclonal antibody. (Heat-induced epitope retrieval by 10mM citric buffer, pH6.0, 100°C for 10min, [TA502504])



Anti-UBA2 mouse monoclonal antibody ([TA502504]) immunofluorescent staining of COS7 cells transiently transfected by pCMV6-ENTRY UBA2 ([RC201288]).