

## Product datasheet for **TA502495S**

### **S100A12 Mouse Monoclonal Antibody [Clone ID: OTI1D1]**

#### **Product data:**

|                         |   |
|-------------------------|---|
| Product Type:           | Primary Antibodies  |
| Clone Name:             | OTI1D1  |
| Applications:           | IHC, WB   |
| Recommended Dilution:   | WB 1:500, IHC 1:150   |
| Reactivity:             | Human   |
| Host:                   | Mouse   |
| Isotype:                | IgG1  |
| Clonality:              | Monoclonal  |
| Immunogen:              | Full length human recombinant protein of human S100A12 (NP_005612) produced in HEK293T cell.              |
| Formulation:            | PBS (pH 7.3) containing 1% BSA, 50% glycerol and 0.02% sodium azide.                                      |
| Concentration:          | 0.68 mg/ml  |
| Purification:           | Purified from mouse ascites fluids or tissue culture supernatant by affinity chromatography (protein A/G) |
| Conjugation:            | Unconjugated  |
| Storage:                | Store at -20°C as received.   |
| Stability:              | Stable for 12 months from date of receipt.  |
| Predicted Protein Size: | 10.4 kDa  |
| Gene Name:              | S100 calcium binding protein A12  |
| Database Link:          | <a href="#">NP_005612</a><br><a href="#">Entrez Gene 6283 Human</a><br><a href="#">P80511</a>             |



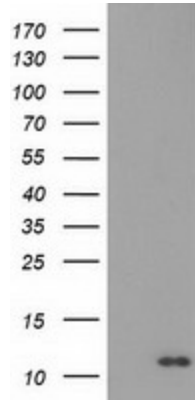
[View online »](#)

**Background:**

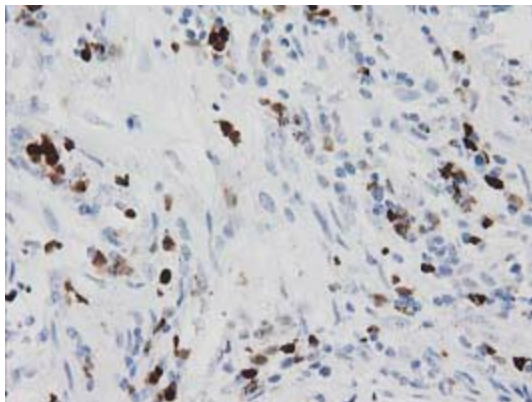
The protein encoded by this gene is a member of the S100 family of proteins containing 2 EF-hand calcium-binding motifs. S100 proteins are localized in the cytoplasm and/or nucleus of a wide range of cells, and involved in the regulation of a number of cellular processes such as cell cycle progression and differentiation. S100 genes include at least 13 members which are located as a cluster on chromosome 1q21. This protein is proposed to be involved in specific calcium-dependent signal transduction pathways and its regulatory effect on cytoskeletal components may modulate various neutrophil activities. [provided by RefSeq]

**Synonyms:**

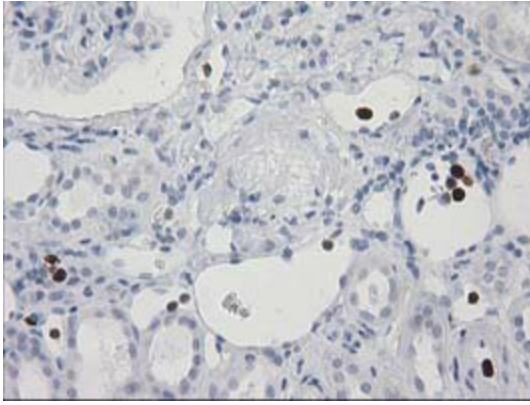
CAAF1; CAGC; CGRP; ENRAGE; MRP-6; MRP6; p6

**Product images:**


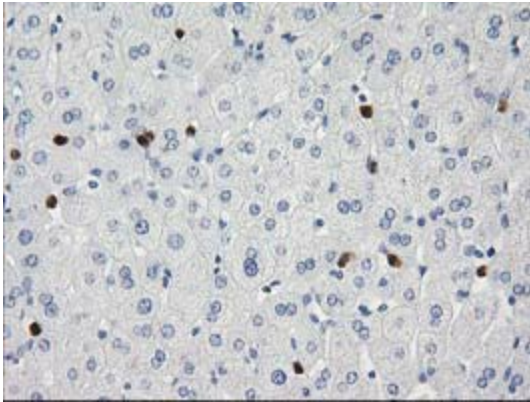
HEK293T cells were transfected with the pCMV6-ENTRY control (Cat# [PS100001], Left lane) or pCMV6-ENTRY S100A12 (Cat# [RC210002], Right lane) cDNA for 48 hrs and lysed. Equivalent amounts of cell lysates (5 ug per lane) were separated by SDS-PAGE and immunoblotted with anti-S100A12 (Cat# [TA502495]). Positive lysates [LY401723] (100ug) and [LC401723] (20ug) can be purchased separately from OriGene.



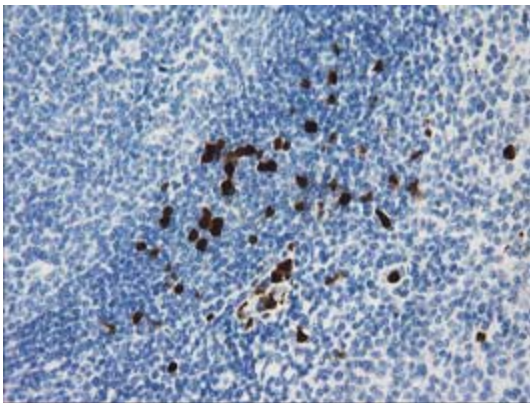
Immunohistochemical staining of paraffin-embedded Adenocarcinoma of Human colon tissue using anti-S100A12 mouse monoclonal antibody. (Heat-induced epitope retrieval by 10mM citric buffer, pH6.0, 100°C for 10min, [TA502495])



Immunohistochemical staining of paraffin-embedded Human Kidney tissue within the normal limits using anti-S100A12 mouse monoclonal antibody. (Heat-induced epitope retrieval by 10mM citric buffer, pH6.0, 100°C for 10min, [TA502495])



Immunohistochemical staining of paraffin-embedded Human liver tissue within the normal limits using anti-S100A12 mouse monoclonal antibody. (Heat-induced epitope retrieval by 10mM citric buffer, pH6.0, 100°C for 10min, [TA502495])



Immunohistochemical staining of paraffin-embedded Human lymph node tissue within the normal limits using anti-S100A12 mouse monoclonal antibody. (Heat-induced epitope retrieval by 10mM citric buffer, pH6.0, 100°C for 10min, [TA502495])