

Product datasheet for **TA502488BM**

POLR2E Mouse Monoclonal Antibody (HRP conjugated) [Clone ID: OTI3C5]

Product data:

Product Type:	Primary Antibodies
Clone Name:	OTI3C5
Applications:	IF, WB
Recommended Dilution:	WB 1:500~2000, IF 1:100
Reactivity:	Human, Mouse, Rat
Host:	Mouse
Isotype:	IgG2a
Clonality:	Monoclonal
Immunogen:	Full length human recombinant protein of human POLR2E (NP_002686) produced in HEK293T cell.
Formulation:	PBS (pH 7.3) containing 1% BSA, 50% glycerol.
Concentration:	0.5 mg/ml
Purification:	Purified from mouse ascites fluids or tissue culture supernatant by affinity chromatography (protein A/G)
Conjugation:	HRP
Storage:	Store at -20°C as received.
Stability:	Stable for 12 months from date of receipt.
Predicted Protein Size:	24.4 kDa
Gene Name:	RNA polymerase II, I and III subunit E
Database Link:	NP_002686 Entrez Gene 66420 Mouse Entrez Gene 690966 Rat Entrez Gene 5434 Human P19388



[View online »](#)

Background:

This gene encodes the fifth largest subunit of RNA polymerase II, the polymerase responsible for synthesizing messenger RNA in eukaryotes. This subunit is shared by the other two DNA-directed RNA polymerases and is present in two-fold molar excess over the other polymerase subunits. An interaction between this subunit and a hepatitis virus transactivating protein has been demonstrated, suggesting that interaction between transcriptional activators and the polymerase can occur through this subunit. A pseudogene is located on chromosome 11. [provided by RefSeq]

Synonyms:

hRPB25; hsRPB5; RPABC1; RPB5; XAP4

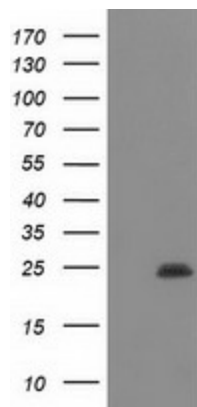
Protein Families:

Transcription Factors

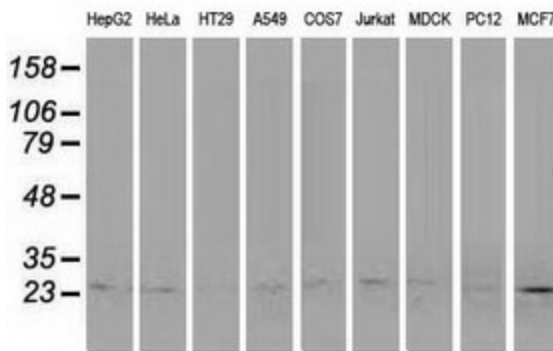
Protein Pathways:

Huntington's disease, Metabolic pathways, Purine metabolism, Pyrimidine metabolism, RNA polymerase

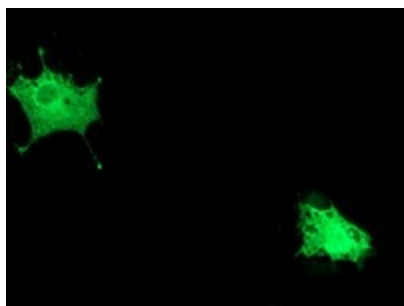
Product images:



HEK293T cells were transfected with the pCMV6-ENTRY control (Left lane) or pCMV6-ENTRY POLR2E ([RC201266], Right lane) cDNA for 48 hrs and lysed. Equivalent amounts of cell lysates (5 ug per lane) were separated by SDS-PAGE and immunoblotted with anti-POLR2E. Positive lysates [LY419161] (100ug) and [LC419161] (20ug) can be purchased separately from OriGene.



Western blot analysis of extracts (35ug) from 9 different cell lines by using anti-POLR2E monoclonal antibody.



Anti-POLR2E mouse monoclonal antibody ([TA502488]) immunofluorescent staining of COS7 cells transiently transfected by pCMV6-ENTRY POLR2E ([RC201266]).