

## Product datasheet for **TA502477BM**

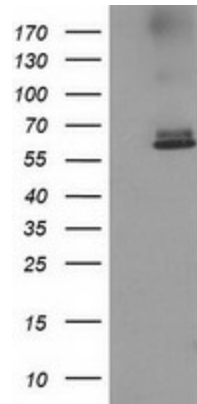
### ACOT12 Mouse Monoclonal Antibody (HRP conjugated) [Clone ID: OTI2D11]

#### Product data:

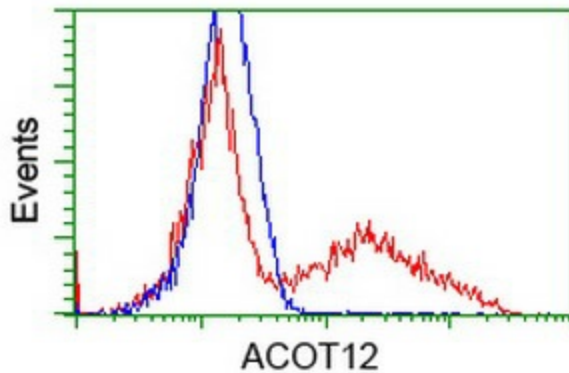
|                         |   |
|-------------------------|---|
| Product Type:           | Primary Antibodies  |
| Clone Name:             | OTI2D11   |
| Applications:           | FC, WB  |
| Recommended Dilution:   | WB 1:2000, FLOW 1:100   |
| Reactivity:             | Human   |
| Host:                   | Mouse   |
| Isotype:                | IgG2a   |
| Clonality:              | Monoclonal  |
| Immunogen:              | Full length human recombinant protein of human ACOT112 (NP_570123) produced in HEK293T cell.              |
| Formulation:            | PBS (pH 7.3) containing 1% BSA, 50% glycerol.   |
| Concentration:          | 0.5 mg/ml   |
| Purification:           | Purified from mouse ascites fluids or tissue culture supernatant by affinity chromatography (protein A/G) |
| Conjugation:            | HRP   |
| Storage:                | Store at -20°C as received.   |
| Stability:              | Stable for 12 months from date of receipt.  |
| Predicted Protein Size: | 61.9 kDa  |
| Gene Name:              | acyl-CoA thioesterase 12  |
| Database Link:          | <a href="#">NP_570123</a><br><a href="#">Entrez Gene 134526 Human</a><br><a href="#">Q8WYK0</a>           |
| Synonyms:               | Cach; CACH-1; STARD15; THEAL  |
| Protein Pathways:       | Pyruvate metabolism   |



[View online »](#)

**Product images:**

HEK293T cells were transfected with the pCMV6-ENTRY control (Left lane) or pCMV6-ENTRY ACOT12 ([RC210445], Right lane) cDNA for 48 hrs and lysed. Equivalent amounts of cell lysates (5 ug per lane) were separated by SDS-PAGE and immunoblotted with anti-ACOT12. Positive lysates [LY408930] (100ug) and [LC408930] (20ug) can be purchased separately from OriGene.



HEK293T cells transfected with either [RC210445] overexpress plasmid (Red) or empty vector control plasmid (Blue) were immunostained by anti-ACOT12 antibody ([TA502477]), and then analyzed by flow cytometry.