

Product datasheet for **TA502471**

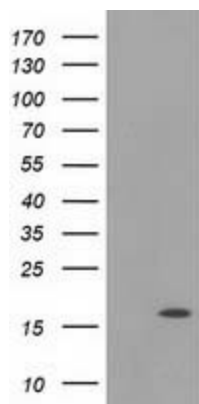
UBL4A Mouse Monoclonal Antibody [Clone ID: OTI4B6]

Product data:

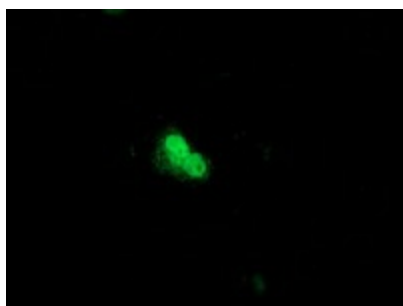
| | |
|-------------------------|--|
| Product Type: | Primary Antibodies |
| Clone Name: | OTI4B6 |
| Applications: | IF, WB |
| Recommended Dilution: | WB 1:2000, IF 1:100 |
| Reactivity: | Human, Mouse, Rat |
| Host: | Mouse |
| Isotype: | IgG2a |
| Clonality: | Monoclonal |
| Immunogen: | Full length human recombinant protein of human UBL4A (NP_055050) produced in E.coli. |
| Formulation: | PBS (pH 7.3) containing 1% BSA, 50% glycerol and 0.02% sodium azide. |
| Concentration: | 0.19 mg/ml |
| Purification: | Purified from mouse ascites fluids or tissue culture supernatant by affinity chromatography (protein A/G) |
| Conjugation: | Unconjugated |
| Storage: | Store at -20°C as received. |
| Stability: | Stable for 12 months from date of receipt. |
| Predicted Protein Size: | 17.6 kDa |
| Gene Name: | ubiquitin like 4A |
| Database Link: | NP_055050 Entrez Gene 27643 Mouse Entrez Gene 293864 Rat Entrez Gene 8266 Human P11441 |
| Synonyms: | DX254E; DXS254E; G6PD; GDX; GET5; MDY2; TMA24; UBL4 |
| Protein Families: | Druggable Genome |



[View online »](#)

Product images:

HEK293T cells were transfected with the pCMV6-ENTRY control (Left lane) or pCMV6-ENTRY UBL4A ([RC208121], Right lane) cDNA for 48 hrs and lysed. Equivalent amounts of cell lysates (5 ug per lane) were separated by SDS-PAGE and immunoblotted with anti-UBL4A. Positive lysates [LY415426] (100ug) and [LC415426] (20ug) can be purchased separately from OriGene.



Anti-UBL4A mouse monoclonal antibody (TA502471) immunofluorescent staining of COS7 cells transiently transfected by pCMV6-ENTRY UBL4A ([RC208121]).