

Product datasheet for **TA502465**

Beta TRCP (BTRC) Mouse Monoclonal Antibody [Clone ID: OTI2H2]

Product data:

Product Type:	Primary Antibodies
Clone Name:	OTI2H2
Applications:	FC, IF, WB
Recommended Dilution:	WB 1:1000, IF 1:100, FLOW 1:100
Reactivity:	Human, Mouse, Rat
Host:	Mouse
Isotype:	IgG2b
Clonality:	Monoclonal
Immunogen:	Human recombinant protein fragment corresponding to amino acids 52-354 of human BTRC(NP_378663) produced in E.coli.
Formulation:	PBS (pH 7.3) containing 1% BSA, 50% glycerol and 0.02% sodium azide.
Concentration:	1 mg/ml
Purification:	Purified from mouse ascites fluids or tissue culture supernatant by affinity chromatography (protein A/G)
Conjugation:	Unconjugated
Storage:	Store at -20°C as received.
Stability:	Stable for 12 months from date of receipt.
Predicted Protein Size:	68.7 kDa
Gene Name:	beta-transducin repeat containing E3 ubiquitin protein ligase
Database Link:	NP_378663 Entrez Gene 12234 Mouse Entrez Gene 361765 Rat Entrez Gene 8945 Human Q9Y297



[View online »](#)

Background:

This gene encodes a member of the F-box protein family which is characterized by an approximately 40 amino acid motif, the F-box. The F-box proteins constitute one of the four subunits of ubiquitin protein ligase complex called SCFs (SKP1-cullin-F-box), which function in phosphorylation-dependent ubiquitination. The F-box proteins are divided into 3 classes: Fbws containing WD-40 domains, Fbls containing leucine-rich repeats, and Fbxs containing either different protein-protein interaction modules or no recognizable motifs. The protein encoded by this gene belongs to the Fbws class; in addition to an F-box, this protein contains multiple WD-40 repeats. The encoded protein mediates degradation of CD4 via its interaction with HIV-1 Vpu. It has also been shown to ubiquitinate phosphorylated NFKBIA (nuclear factor of kappa light polypeptide gene enhancer in B-cells inhibitor, alpha), targeting it for degradation and thus activating nuclear factor kappa-B. Alternatively spliced transcript variants have been described. A related pseudogene exists in chromosome 6. [provided by RefSeq, Mar

Synonyms:

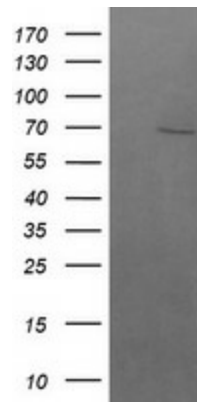
BETA-TRCP; betaTrCP; bTrCP; bTrCP1; FBW1A; FBXW1; FBXW1A; FWD1

Protein Families:

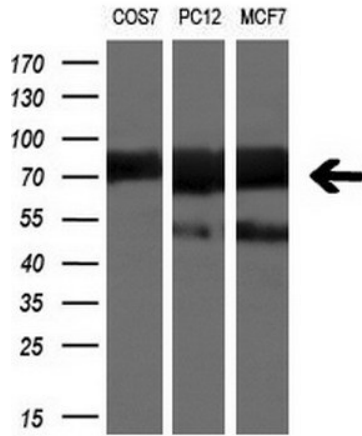
Druggable Genome

Protein Pathways:

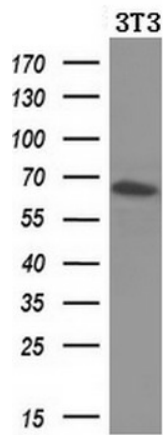
Hedgehog signaling pathway, Oocyte meiosis, Ubiquitin mediated proteolysis, Wnt signaling pathway

Product images:

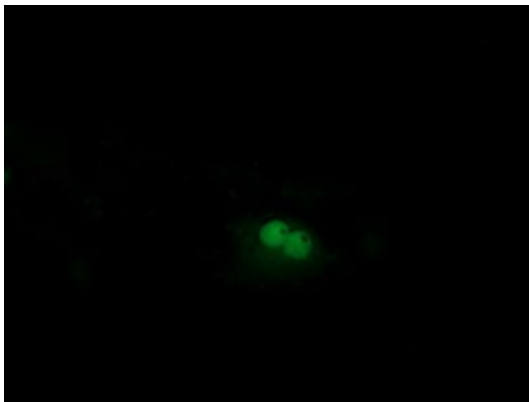
HEK293T cells were transfected with the pCMV6-ENTRY control (Cat# [PS100001], Left lane) or pCMV6-ENTRY BTRC (Cat# [RC207025], Right lane) cDNA for 48 hrs and lysed. Equivalent amounts of cell lysates (5 ug per lane) were separated by SDS-PAGE and immunoblotted with anti-BTRC (Cat# TA502465).



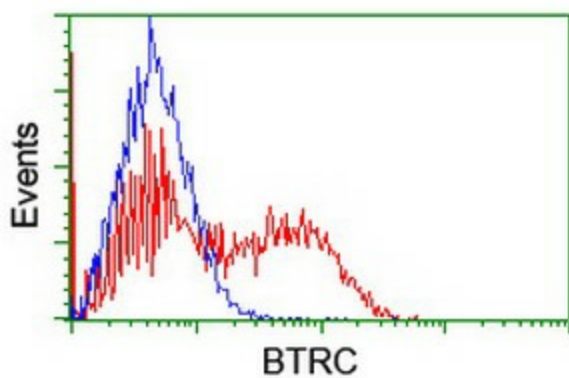
Western blot analysis of extracts (10ug) from 3 different cell lines by using anti-BTRC monoclonal antibody at 1:200 dilution.



Western blot analysis of extracts (10ug) from a mouse cell line by using anti-BTRC monoclonal antibody (1:200).



Anti-BTRC mouse monoclonal antibody (TA502465) immunofluorescent staining of COS7 cells transiently transfected by pCMV6-ENTRY BTRC ([RC207025]).



HEK293T cells transfected with either [RC207025] overexpress plasmid (Red) or empty vector control plasmid (Blue) were immunostained by anti-BTRC antibody (TA502465), and then analyzed by flow cytometry.