

## Product datasheet for **TA502459BM**

### **KATNAL1 Mouse Monoclonal Antibody (HRP conjugated) [Clone ID: OTI4G1]**

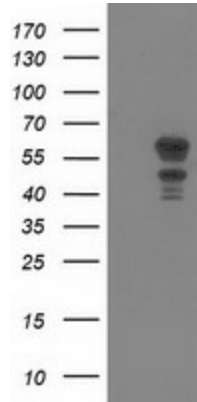
#### **Product data:**

Product Type:	Primary Antibodies
Clone Name:	OTI4G1
Applications:	WB
Recommended Dilution:	WB 1:500~2000
Reactivity:	Human, Monkey, Mouse, Rat
Host:	Mouse
Isotype:	IgG1
Clonality:	Monoclonal
Immunogen:	Full length human recombinant protein of human KATNAL1 (NP_115492) produced in HEK293T cell.
Formulation:	PBS (pH 7.3) containing 1% BSA, 50% glycerol.
Concentration:	0.5 mg/ml
Purification:	Purified from mouse ascites fluids or tissue culture supernatant by affinity chromatography (protein A/G)
Conjugation:	HRP
Storage:	Store at -20°C as received.
Stability:	Stable for 12 months from date of receipt.
Predicted Protein Size:	55.2 kDa
Gene Name:	katanin catalytic subunit A1 like 1
Database Link:	<a href="#">NP_115492</a> <a href="#">Entrez Gene 288449 Rat</a> <a href="#">Entrez Gene 712636 Monkey</a> <a href="#">Entrez Gene 84056 Human</a> <a href="#">Q9BW62</a>
Synonyms:	MGC2599

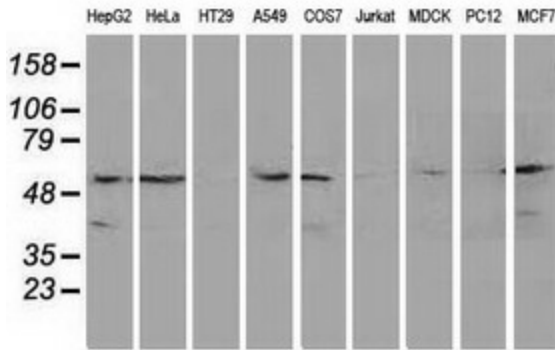


[View online »](#)

**Product images:**



HEK293T cells were transfected with the pCMV6-ENTRY control (Left lane) or pCMV6-ENTRY KATNAL1 ([RC200828], Right lane) cDNA for 48 hrs and lysed. Equivalent amounts of cell lysates (5 ug per lane) were separated by SDS-PAGE and immunoblotted with anti-KATNAL1. Positive lysates [LY403145] (100ug) and [LC403145] (20ug) can be purchased separately from OriGene.



Western blot analysis of extracts (35ug) from 9 different cell lines by using anti-KATNAL1 monoclonal antibody.