

Product datasheet for **TA502455M**

POLR2J2 Mouse Monoclonal Antibody [Clone ID: OTI6E9]

Product data:

Product Type:	Primary Antibodies
Clone Name:	OTI6E9
Applications:	FC, WB
Recommended Dilution:	WB 1:2000, FLOW 1:100
Reactivity:	Human
Host:	Mouse
Isotype:	IgG2a
Clonality:	Monoclonal
Immunogen:	Full length human recombinant protein of human POLR2J2 (NP_116581) produced in HEK293T cell.
Formulation:	PBS (pH 7.3) containing 1% BSA, 50% glycerol and 0.02% sodium azide.
Concentration:	0.94 mg/ml
Purification:	Purified from mouse ascites fluids or tissue culture supernatant by affinity chromatography (protein A/G)
Conjugation:	Unconjugated
Storage:	Store at -20°C as received.
Stability:	Stable for 12 months from date of receipt.
Predicted Protein Size:	12.9 kDa
Gene Name:	RNA polymerase II subunit J2
Database Link:	NP_116581 Entrez Gene 246721 Human Q9GZM3

[View online »](#)

Background:

This gene is a member of the RNA polymerase II subunit 11 gene family, which includes three genes in a cluster on chromosome 7q22.1 and a pseudogene on chromosome 7p13. The founding member of this family, DNA directed RNA polymerase II polypeptide J, has been shown to encode a subunit of RNA polymerase II, the polymerase responsible for synthesizing messenger RNA in eukaryotes. This locus produces multiple, alternatively spliced transcripts that potentially express isoforms with distinct C-termini compared to DNA directed RNA polymerase II polypeptide J. Most or all variants are spliced to include additional non-coding exons at the 3' end which makes them candidates for nonsense-mediated decay (NMD). Consequently, it is not known if this locus expresses a protein or proteins in vivo. [provided by RefSeq]

Synonyms:

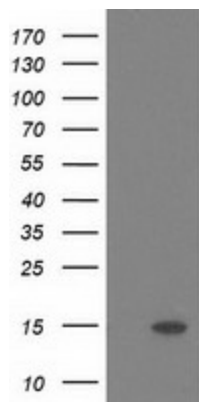
HRPB11B; RPB11b1

Protein Families:

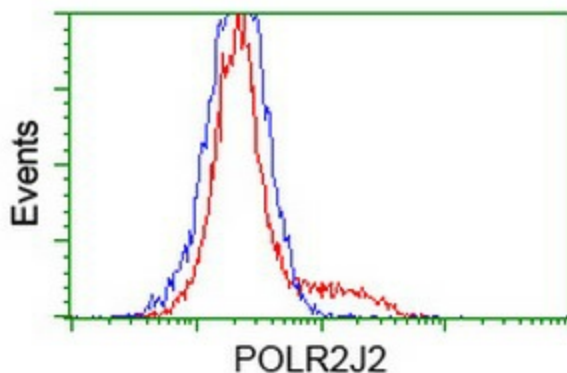
Transcription Factors

Protein Pathways:

Huntington's disease, Metabolic pathways, Purine metabolism, Pyrimidine metabolism, RNA polymerase

Product images:


HEK293T cells were transfected with the pCMV6-ENTRY control (Left lane) or pCMV6-ENTRY POLR2J2 ([RC224755], Right lane) cDNA for 48 hrs and lysed. Equivalent amounts of cell lysates (5 ug per lane) were separated by SDS-PAGE and immunoblotted with anti-POLR2J2. Positive lysates [LY409843] (100ug) and [LC409843] (20ug) can be purchased separately from OriGene.



HEK293T cells transfected with either [RC224755] overexpress plasmid (Red) or empty vector control plasmid (Blue) were immunostained by anti-POLR2J2 antibody ([TA502455]), and then analyzed by flow cytometry.