

## Product datasheet for **TA502454**

### **POLR2J2 Mouse Monoclonal Antibody [Clone ID: OTI3G4]**

#### **Product data:**

Product Type:	Primary Antibodies
Clone Name:	OTI3G4
Applications:	FC, IF, IHC, WB
Recommended Dilution:	WB 1:2000, IHC 1:150, IF 1:100, FLOW 1:100
Reactivity:	Human
Host:	Mouse
Isotype:	IgG2a
Clonality:	Monoclonal
Immunogen:	Full length human recombinant protein of human POLR2J2 (NP_116581) produced in HEK293T cell.
Formulation:	PBS (pH 7.3) containing 1% BSA, 50% glycerol and 0.02% sodium azide.
Concentration:	0.72 mg/ml
Purification:	Purified from mouse ascites fluids or tissue culture supernatant by affinity chromatography (protein A/G)
Conjugation:	Unconjugated
Storage:	Store at -20°C as received.
Stability:	Stable for 12 months from date of receipt.
Predicted Protein Size:	12.9 kDa
Gene Name:	RNA polymerase II subunit J2
Database Link:	<a href="#">NP_116581</a> <a href="#">Entrez Gene 246721 Human</a> <a href="#">Q9GZM3</a>



[View online »](#)

**Background:**

This gene is a member of the RNA polymerase II subunit 11 gene family, which includes three genes in a cluster on chromosome 7q22.1 and a pseudogene on chromosome 7p13. The founding member of this family, DNA directed RNA polymerase II polypeptide J, has been shown to encode a subunit of RNA polymerase II, the polymerase responsible for synthesizing messenger RNA in eukaryotes. This locus produces multiple, alternatively spliced transcripts that potentially express isoforms with distinct C-termini compared to DNA directed RNA polymerase II polypeptide J. Most or all variants are spliced to include additional non-coding exons at the 3' end which makes them candidates for nonsense-mediated decay (NMD). Consequently, it is not known if this locus expresses a protein or proteins in vivo. [provided by RefSeq]

**Synonyms:**

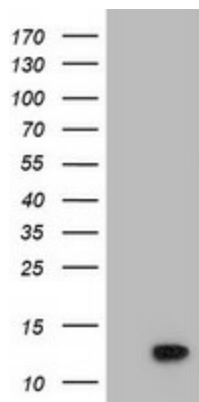
HRPB11B; RPB11b1

**Protein Families:**

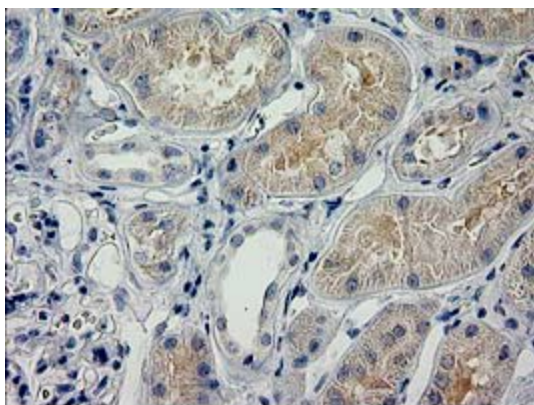
Transcription Factors

**Protein Pathways:**

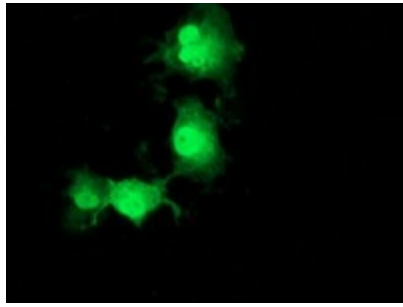
Huntington's disease, Metabolic pathways, Purine metabolism, Pyrimidine metabolism, RNA polymerase

**Product images:**

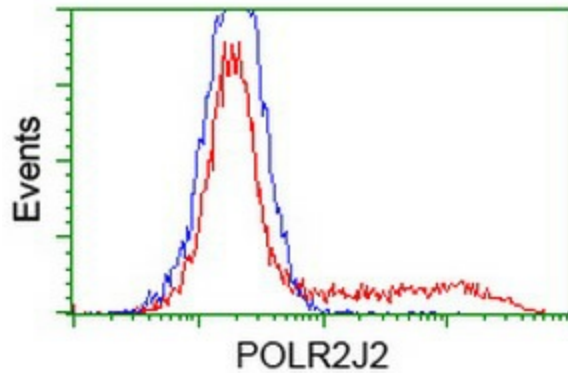
HEK293T cells were transfected with the pCMV6-ENTRY control (Cat# [PS100001], Left lane) or pCMV6-ENTRY POLR2J2 (Cat# [RC224755], Right lane) cDNA for 48 hrs and lysed. Equivalent amounts of cell lysates (5 ug per lane) were separated by SDS-PAGE and immunoblotted with anti-POLR2J2 (Cat# TA502454). Positive lysates [LY409843] (100ug) and [LC409843] (20ug) can be purchased separately from OriGene.



Immunohistochemical staining of paraffin-embedded Human Kidney tissue within the normal limits using anti-POLR2J2 mouse monoclonal antibody. (Heat-induced epitope retrieval by 10mM citric buffer, pH6.0, 100°C for 10min, TA502454)



Anti-POLR2J2 mouse monoclonal antibody (TA502454) immunofluorescent staining of COS7 cells transiently transfected by pCMV6-ENTRY POLR2J2 ([RC224755]).



HEK293T cells transfected with either [RC224755] overexpress plasmid (Red) or empty vector control plasmid (Blue) were immunostained by anti-POLR2J2 antibody (TA502454), and then analyzed by flow cytometry.