

## Product datasheet for **TA502453AM**

### PIH1D2 Mouse Monoclonal Antibody (Biotin conjugated) [Clone ID: OTI5G9]

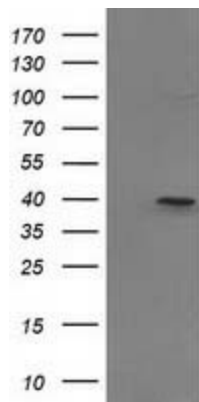
#### Product data:

Product Type:	Primary Antibodies
Clone Name:	OTI5G9
Applications:	WB
Recommended Dilution:	WB 1:500~2000
Reactivity:	Human, Monkey
Host:	Mouse
Isotype:	IgG1
Clonality:	Monoclonal
Immunogen:	Full length human recombinant protein of human PIH1D2 (NP_620144) produced in E.coli.
Formulation:	PBS (pH 7.3) containing 1% BSA, 50% glycerol and 0.02% sodium azide.
Concentration:	0.5 mg/ml
Purification:	Purified from mouse ascites fluids or tissue culture supernatant by affinity chromatography (protein A/G)
Conjugation:	Biotin
Storage:	Store at -20°C as received.
Stability:	Stable for 12 months from date of receipt.
Predicted Protein Size:	35.8 kDa
Gene Name:	PIH1 domain containing 2
Database Link:	<a href="#">NP_620144</a> <a href="#">Entrez Gene 711087 Monkey</a> <a href="#">Entrez Gene 120379 Human</a> <a href="#">Q8WWB5</a>
Synonyms:	PIH1 domain containing 2

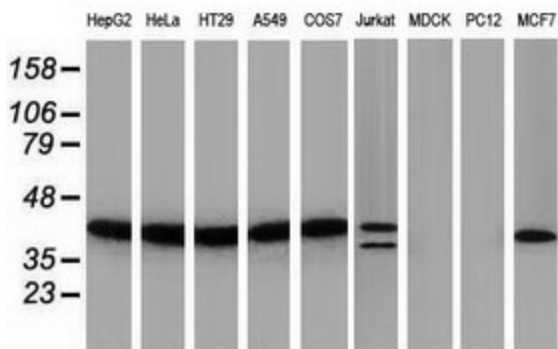


[View online »](#)

**Product images:**



HEK293T cells were transfected with the pCMV6-ENTRY control (Left lane) or pCMV6-ENTRY PIH1D2 ([RC205039], Right lane) cDNA for 48 hrs and lysed. Equivalent amounts of cell lysates (5 ug per lane) were separated by SDS-PAGE and immunoblotted with anti-PIH1D2. Positive lysates [LY408526] (100ug) and [LC408526] (20ug) can be purchased separately from OriGene.



Western blot analysis of extracts (35ug) from 9 different cell lines by using anti-PIH1D2 monoclonal antibody.