

## Product datasheet for **TA502434BM**

### **NORE1 (RASSF5) Mouse Monoclonal Antibody (HRP conjugated) [Clone ID: OT11C6]**

#### **Product data:**

Product Type:	Primary Antibodies
Clone Name:	OT11C6
Applications:	WB
Recommended Dilution:	WB 1:500
Reactivity:	Human, Mouse, Rat
Host:	Mouse
Isotype:	IgG2b
Clonality:	Monoclonal
Immunogen:	Full length human recombinant protein of human RASSF5 (NP_872606) produced in HEK293T cell.
Formulation:	PBS (pH 7.3) containing 1% BSA, 50% glycerol.
Concentration:	0.5 mg/ml
Purification:	Purified from mouse ascites fluids or tissue culture supernatant by affinity chromatography (protein A/G)
Conjugation:	HRP
Storage:	Store at -20°C as received.
Stability:	Stable for 12 months from date of receipt.
Predicted Protein Size:	30.2 kDa
Gene Name:	Ras association domain family member 5
Database Link:	<a href="#">NP_872606</a> <a href="#">Entrez Gene 54354 Mouse</a> <a href="#">Entrez Gene 54355 Rat</a> <a href="#">Entrez Gene 83593 Human</a> <a href="#">Q8WWW0</a>

**Background:** This gene is a member of the Ras association domain family. It functions as a tumor suppressor, and is inactivated in a variety of cancers. The encoded protein localizes to centrosomes and microtubules, and associates with the GTP-activated forms of Ras, Rap1, and several other Ras-like small GTPases. The protein regulates lymphocyte adhesion and suppresses cell growth in response to activated Rap1 or Ras. Multiple transcript variants encoding different isoforms have been found for this gene. [provided by RefSeq, Jul 2008]



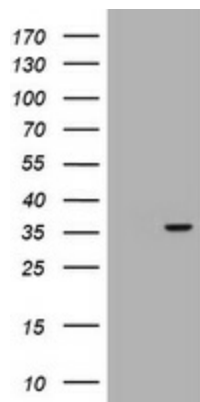
[View online »](#)

**Synonyms:** Maxp1; NORE1; NORE1A; NORE1B; RAPL; RASSF3

**Protein Families:** Druggable Genome

**Protein Pathways:** Leukocyte transendothelial migration, Non-small cell lung cancer, Pathways in cancer

### Product images:



HEK293T cells were transfected with the pCMV6-ENTRY control (Left lane) or pCMV6-ENTRY RASSF5 ([RC203854], Right lane) cDNA for 48 hrs and lysed. Equivalent amounts of cell lysates (5 ug per lane) were separated by SDS-PAGE and immunoblotted with anti-RASSF5. Positive lysates [LY405440] (100ug) and [LC405440] (20ug) can be purchased separately from OriGene.