

## Product datasheet for **TA502430BM**

### EIF4EL3 (EIF4E2) Mouse Monoclonal Antibody (HRP conjugated) [Clone ID: OTI5D11]

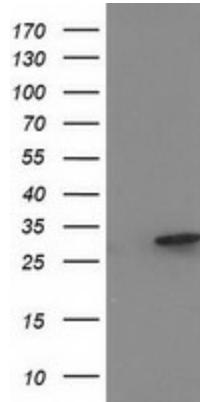
#### Product data:

Product Type:	Primary Antibodies
Clone Name:	OTI5D11
Applications:	IF, WB
Recommended Dilution:	WB 1:1000~2000, IF 1:100
Reactivity:	Human, Mouse
Host:	Mouse
Isotype:	IgG2b
Clonality:	Monoclonal
Immunogen:	Full length human recombinant protein of human EIF4E2 (NP_004837) produced in HEK293T cell.
Formulation:	PBS (pH 7.3) containing 1% BSA, 50% glycerol.
Concentration:	0.5 mg/ml
Purification:	Purified from mouse ascites fluids or tissue culture supernatant by affinity chromatography (protein A/G)
Conjugation:	HRP
Storage:	Store at -20°C as received.
Stability:	Stable for 12 months from date of receipt.
Predicted Protein Size:	28.2 kDa
Gene Name:	eukaryotic translation initiation factor 4E family member 2
Database Link:	<a href="#">NP_004837</a> <a href="#">Entrez Gene 26987 Mouse</a> <a href="#">Entrez Gene 9470 Human</a> <a href="#">O60573</a>
Synonyms:	4E-LP; 4EHP; EIF4EL3; IF4e
Protein Families:	Transcription Factors
Protein Pathways:	Insulin signaling pathway, mTOR signaling pathway

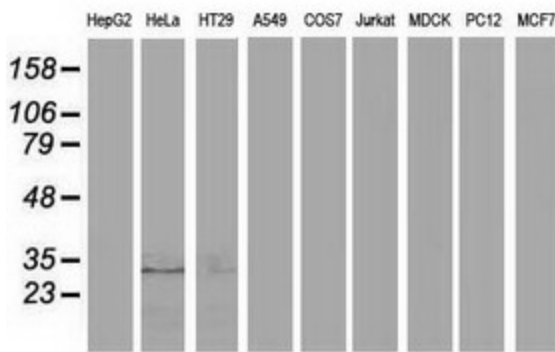


[View online »](#)

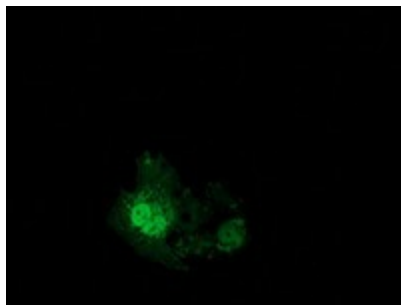
**Product images:**



HEK293T cells were transfected with the pCMV6-ENTRY control (Left lane) or pCMV6-ENTRY EIF4E2 ([RC201391], Right lane) cDNA for 48 hrs and lysed. Equivalent amounts of cell lysates (5 ug per lane) were separated by SDS-PAGE and immunoblotted with anti-EIF4E2. Positive lysates [LY401518] (100ug) and [LC401518] (20ug) can be purchased separately from OriGene.



Western blot analysis of extracts (35ug) from 9 different cell lines by using anti-EIF4E2 monoclonal antibody.



Anti-EIF4E2 mouse monoclonal antibody ([TA502430]) immunofluorescent staining of COS7 cells transiently transfected by pCMV6-ENTRY EIF4E2 ([RC201391]).